

THE '96 KIDS COLLECTION

ACTION BIKES

Head for where the action's at. Go for the rush with the new Raleigh MAX. MAXimum strength, MAXimum performance, MAXimum style. It's the only bike to be seen on. Oversize tubes in wickedly bright 'Reflex' and shiny gloss paint get you noticed night and day. High profile tread 'Raider' tyres on alloy rims deliver deadly grip in the wet and dry. Speedy Shimano gearing with 'Gripshift' control means you can split at the speed of light. And powerful cantilever brakes let you stop on the scene. You want MAXimum respect. You got it with the Raleigh MAX for guys and girls!



For burning up the toughest terrain, you can't beat the powerful new Activator. This is a suspension bike built for out and out excitement. Its "Synchro Shock" front forks speed you over bumps effortlessly. And all new 'Raider' tyres give extra sure grip on and off-road.

Check out the hot paint and wild graphics of the new 24", 20" and 16" Boys and Girls Action Bikes. Discover the thrills of racing with the new Formula 5. Capture the speed of blading with Roller Blaze. Patrol your block with Arctic Patrol or paint the town with Artist. The word is - to get around, ride the hottest bikes in town - Raleigh.



**Max 10 GS Girls** ■ Latest generation robot-welded oversize 14" MTB frame. ■ Shimano 10 speed index gearing with 'Gripshift'-split grip rotational shifting for improved control. ■ Reflective 'Reflex Rubine' finish - be seen day and night. ■ Bar ends for alternative riding position. ■ Inside leg range: 23"-28". ■ Probable riding age: 8½-11½. ■ Also available: 5 speed model without bar ends and with 20" wheels.

**Max 10 GS Boys** ■ Latest generation robot-welded oversize 14" MTB frame. ■ Shimano 10 speed index gearing with 'Gripshift' - split grip rotational shifting for improved control. ■ Reflective 'Reflex Emerald' finish - be seen day and night. ■ Bar ends for alternative riding position. ■ Inside leg range: 23"-28". ■ Probable riding age: 8½-11½.



**Max 10 Boys** ■ Latest generation robot-welded oversize 14" MTB frame. ■ Shimano 10 speed index gearing with thumbshift control-fast and accurate gear changing. ■ Cantilever brakes - for powerful braking performance. ■ Alloy rims - lightweight and strong. ■ Gloss Black finish. ■ Inside leg range: 23"-28". ■ Probable riding age: 8½-11½.



**Desert Strike 10** ■ Shimano 10 speed index gearing with thumbshift control - fast and accurate gear changing. ■ Cantilever brakes - for powerful braking performance. ■ Water bottle and cage - for quenching any thirst. ■ Sahara Orange and Night Blue finish with computer game - style 'aircraft target system' graphics. ■ Inside leg range: 22"-26". ■ Probable riding age: 6½-9½.



**Elysia 10** ■ Shimano 10 speed index gearing with thumbshift control - for quick and easy selection. ■ Cantilever brakes - for powerful braking performance. ■ Water Bottle and cage - for quenching any thirst. ■ Fruity 'Blackcurrant Crush' finish with ice-cool iridescent graphics. ■ Inside leg range: 23"-28". ■ Probable riding age: 8½-11½. ■ Also available: 5 speed model without water bottle and cage with 20" wheels (age band 5½-8½ and 6½-9½).

**Roller Blaze 5 GS** ■ Shimano 5 speed index gearing with 'Gripshift' - split grip rotational shifting for improved control. ■ Semi-raised handlebar for confident control. ■ Semi-slick tyres for you to 'Roll With It!'. ■ Roller Blazing Indigo Blue finish with 'Orbital Motion' graphics. ■ Inside leg range: 20"-24" and 22"-26". ■ Probable riding age: 5½-8½ and 6½-9½. ■ Also available: 10 speed model with 24" wheels (age band 8½-11½).



**Max 5 SIS Girls** ■ Latest generation robot-welded Girls oversize MTB frame. ■ Shimano 5 speed index gearing with thumbshift control - for fast and accurate changing. ■ Cantilever brakes for powerful braking performance. ■ Alloy rims - lightweight and strong. ■ Flamboyant Purple finish for MAXimum fashionable appeal. ■ Inside leg range: 20"-24" and 22"-26". ■ Probable riding age: 5½-8½ and 6½-9½. ■ 10 speed model available with 24" wheels.



**Freedom** ■ Shimano 5 speed index gearing with thumbshift control - for fast and accurate gear changing. ■ Semi-raised handlebar for confident control. ■ Anatomical 'Litefoam' saddle for more comfortable riding. ■ Cirrus Vapour finish and aerodynamic rear wheel disc with diving dolphin, sea, land and sky graphics. ■ Inside leg range: 20"-24" and 22"-26". ■ Probable riding age: 5½-8½ and 6½-9½.



**Activator 5** ■ Raleigh 'Synchro Shock' fork system - absorbs the impact of uneven ground, improving rider performance. ■ Shimano 5 speed index gearing with thumbshift control - fast and accurate gear changing. ■ Alloy rims - lightweight and strong. ■ New 'Raider' tyres for improved on and off-road grip. ■ Steel Blue with Platinum Blue Flash finish with 'Activator' graphics. ■ Inside leg range: 22"-26". ■ Probable riding age: 6½-9½. ■ Also available: Single speed version with 16" wheels (age band 4½-6½ yrs). 10 speed version with 24" wheels (age band 8½-11½).

**Palomino** ■ A choice of Shimano 5 speed index gearing or single speed. ■ Semi-raised handlebar for confident control. ■ 'Running Free' handlebar-fitting bag. ■ Strawberry Pink finish with 'Running Free' wild horses graphics. ■ Inside leg range: single speed 20"-24", 5 speed 20"-24" and 22"-26". ■ Probable riding age: single speed 5½-8½, 5 speed 5½-8½ and 6½-9½. ■ Also available: 5 speed (24" wheel model)



**Formula 5 GS** ■ Shimano 5 speed index gearing with 'Gripshift' motorbike-style split grip rotational shifter. ■ Semi-raised handlebar for confident control. ■ Semi-slick tyres for performance in the wet and the dry. ■ Formula 5' Racing Blue and White finish with Racing and Sponsorship-style graphics. ■ Inside leg range: 20"-24" and 22"-26". ■ Probable riding age: 5½-8½ and 6½-9½



**Max 5 GS Boys** ■ Latest generation robot-welded Boys oversize MTB frame. ■ Shimano 5 speed index gearing with 'Gripshift' motorbike-style split grip rotational shifter. ■ Cantilever brakes for powerful braking performance. ■ Reflective 'Reflex Emerald' finish - be seen day and night. ■ Inside leg range: 20"-24" and 22"-26". ■ Probable riding age: 5½-8½ and 6½-9½.



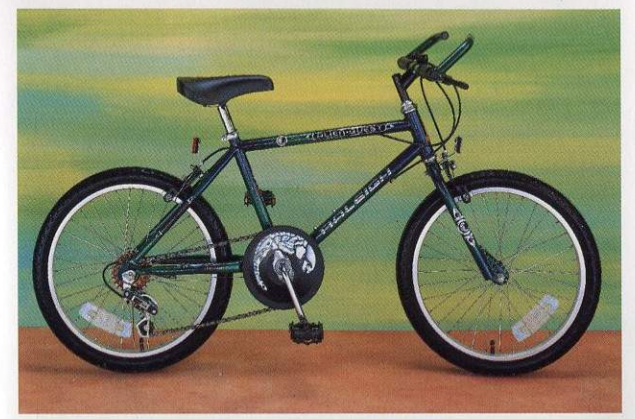
**Max 5 SIS Boys** ■ Latest generation robot-welded Boys oversize MTB frame. ■ Shimano 5 speed index gearing with thumbshift control - for fast and accurate changing. ■ Cantilever brakes for powerful braking performance. ■ Alloy rims - lightweight and strong. ■ Gloss Black finish. ■ Inside leg range: 20"-24" and 22"-26". ■ Probable riding age: 5½-8½ and 6½-9½



**Bronx**

■ Shimano 5 speed index gearing - an added feature for 1996/97. ■ Hi-rise BMX handlebar, four bolt BMX stem and Chrome BMX fork - genuine BMX features. ■ CD effect chain disc protector - the latest in BMX fashion. ■ Gloss Black finish with street-style BMX graphics. ■ Inside leg range: 20"-24". ■ Probable riding age: 5½-8½.

**Alien Quest** ■ A choice of Shimano 5 speed index gearing or single speed. ■ A choice of straight handlebar with bar ends on 5 speed model or semi-raised handlebar on single speed model. ■ Tough BMX fork for adventurous riding performance. ■ Computer game-style 'Alien Quest' adventure graphics with Amazon Vapour finish. ■ Inside leg range: 20"-24" and 22"-26". ■ Probable riding age: single speed 5½-8½, 5 speed 5½-8½ and 6½-9½. ■ Also available: 5 speed model with Caliper brakes and 10 speed model with Cantilever brakes, both with 24" wheels.



**Artist** ■ Raleigh Girls short reach Action Bike frame design for improved fit and easy handling. ■ Semi-raised handlebar for confident riding control. ■ Ball bearing headset makes steering smooth and easy. ■ Animated 'Created By Hand' art theme graphics with colourful Vitriol Blue and Yellow finish. ■ Inside leg range: 18"-22". ■ Probable riding age: 4½-6½.



**Vogue** ■ Raleigh Girls short reach Action Bike frame design for sleek looks and easy handling. ■ Semi-raised handlebar for confident riding control. ■ 'Club Vogue' handlebar bag with easy to use poppers and durable straps - for use at home or at school. ■ Stylish 'Lipstick Pink' Cromica finish with fun fashion theme graphics. ■ Inside leg range: 18"-22". ■ Probable riding age: 4½-6½.

**Arctic Patrol** ■ Raleigh Boys short reach Action Bike frame design for improved fit and easy handling. ■ BMX fork for more rugged riding. ■ 'Survival' water bottle with clip-on frame holder for beating thirst when out on patrol. ■ Camouflage graphics and Ice White finish for the complete arctic look. ■ Inside leg range: 18"-22". ■ Probable riding age: 4½-6½.



**Demon** ■ Raleigh Boys short reach Action Bike frame design for improved fit and easy handling. ■ Semi-raised handlebar for confident riding control. ■ Ball bearing headset makes steering smooth and easy. ■ Terrific Thunder Vapour finish with mean 'Demon' graphics. ■ Inside leg range: 18"-22". ■ Probable riding age: 4½-6½.



SECOND EDITION

# PLAY BIKES

## THE RALEIGH GUARANTEE

ALL RALEIGH BIKES CONFORM TO BS6102 (BRITISH STANDARD FOR BICYCLES). THEY ARE SO WELL CONSTRUCTED, WE GUARANTEE THE FRAMES AND NON-SUSPENSION FORKS FOR A FULL 15 YEARS (TRIKES ONE YEAR). IN ADDITION, RALEIGH ALSO OFFER A UNIQUE 15 YEAR ANTI-CORROSION WARRANTY AND ALL OUR BIKES CARRY A ONE YEAR PARTS WARRANTY. THE "SYNCHRO SHOCK" FORK SYSTEMS ARE GUARANTEED FOR ONE YEAR. SEE YOUR RALEIGH BICYCLE GUIDE FOR DETAILS. MANY OF OUR STOCKISTS CAN NOW OFFER "EXTRA COVER", AN EXTENDED WARRANTY ON RALEIGH PRODUCTS, GIVING YOU EXTRA PIECE OF MIND AND CONTINUED WORRY-FREE CYCLING. FOR MORE INFORMATION ON "EXTRA COVER" OR ANY WARRANTY QUERIES ON RALEIGH PRODUCTS, CALL 0115 942 0202 EXT 3098 (SOUTH) OR 3099 (NORTH).

## THE RALEIGH CYCLE PROTECTION REGISTER

TO HELP YOU SHOULD YOU BE UNFORTUNATE ENOUGH TO HAVE YOUR BIKE STOLEN, RALEIGH CAN REGISTER YOUR NEW BIKE, FREE, ON OUR UNIQUE CUSTOMER COMPUTER. YOU HAVE A MUCH BETTER CHANCE OF RECOVERING IT IF YOU HAVE RECORDED THE FRAME NUMBER AND ITS SPECIFICATIONS FOR EASE OF IDENTIFICATION. SEE YOUR RALEIGH BICYCLE GUIDE FOR DETAILS.



RALEIGH INDUSTRIES LTD, NOTTINGHAM NG7 2DD, ENGLAND  
WEB <http://www.raleighbikes.com>

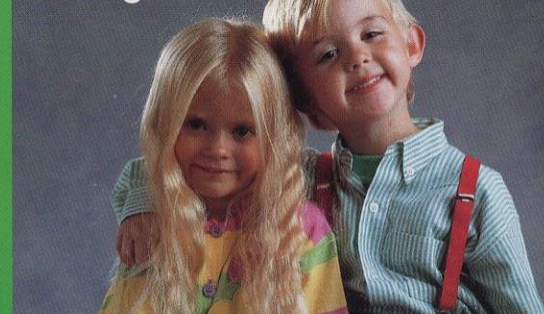
ALL THE BICYCLES SHOWN IN THIS CATALOGUE ARE AVAILABLE FROM YOUR RALEIGH STOCKIST.

COLOURS PRINTED IN THIS CATALOGUE ARE AS NEAR AS POSSIBLE TO THE MANUFACTURED RALEIGH PRODUCT. FOR AN ACCURATE COMPARISON WE RECOMMEND YOU SEE THE ACTUAL PRODUCT ON DISPLAY AT YOUR RALEIGH STOCKIST. DUE TO OUR POLICY OF CONTINUAL IMPROVEMENT, PRODUCT SPECIFICATION AND APPEARANCE MAY CHANGE WHILE THIS CATALOGUE IS STILL IN USE.

ISSUE DATE: JUNE 1996. DESIGNED AND PRODUCED BY CROSS HILL CONWILL.

Girls and boys, whatever their age, always enjoy the fun and excitement of their first new bike. With a Raleigh, it's guaranteed. Our girls bikes in the latest stylish colours have built in extra play features like dolly seats and carriers. Our play bikes are just as exciting with colourful graphics and packed with 'real-bike' features. Whilst our trikes are sturdy and stable, making sure any toddler can set off safely to enjoy all the fun that Raleigh can provide.

## Aren't they worth a Raleigh?



No time is more important than the time you take to choose your child's first bike. You want to be sure they're safe and having fun as they enjoy their first experience of two wheel travel. With Raleigh, they couldn't be in better hands because we build in safety as well as superb play value. It's our care in making certain there are no rough edges or finger traps. The certainty that proper brakes are within easy reach of little hands, that pedals are made from non slip rubber and tyres are pneumatic, not solid, for real control. Frame mounted stabilisers, non toxic paints, and fully enclosed chain guards add to all the reasons why we exceed the British Safety Standard. But don't just take our word, compare our bikes with other models. We guarantee you'll agree that every child is worth a Raleigh.



**Mermaid** ■ Fun Mermaid graphics and Brilliant Pink paint finish. ■ Custom designed dolly carrier for added fun. ■ Short-reach brake levers, removable stabilisers and non-slip pedals provide easy and reassuring control. ■ Colour: Brilliant Pink. ■ Inside leg: 18"-22". ■ Probable riding age: 4½ - 6½.



**Genie** ■ Magical Genie graphic scheme with exclusive vaporised paint finish. ■ Low step-over girls' frame with comfortable forward reach for safe handling. ■ Custom designed dolly carrier with strap adds play value. ■ Detachable stabilisers allow for growth. ■ Colour: Electra Red Vapour. ■ Inside leg: 18"-22". ■ Probable riding age: 4½ - 6½.

**Starlight** ■ Enchanting fantasia graphic theme with exclusive vaporised paint finish. ■ 14" wheel girls play cycle offers style and growth potential. ■ Raised handlebar with adjustable reach brake levers to improve control and riding confidence. ■ Custom-designed dolly carrier with seat belt for more play value. ■ Colour: Fantasy Vapour. ■ Inside leg: 17"-21". ■ Probable riding age: 3½ - 5½.



**Twister** ■ Fun 14" wheel play bike for girls with zippy music graphics. ■ Strong and stylish low-step over frame. ■ Custom-designed dolly carrier with seat belt for more play value. ■ Exclusive vaporised paint finish. ■ Colour: Party Vapour. ■ Inside leg: 17"-21". ■ Probable riding age: 3½ - 5½.



**Spooky** ■ Spooky fun from this 14" wheel play bike for boys. ■ Mini mountain bike frame style gives strength and growth potential. ■ Removable stabilisers and adjustable reach brake levers promote confident riding. ■ Colour: Phantom Blue or Phantom Red. ■ Inside leg: 17"-21". ■ Probable riding age: 3½ - 5½.



**Dove** ■ Stylish Raleigh dolly carrier for more creative play times. ■ Wide section pneumatic tyres, padded saddle and non-slip pedals - comfortable and no sharp edges. ■ Junior rise bar with short-reach brake lever makes steering and control easy. ■ Colour: Ocean Vapour. ■ Inside leg: 14"-18". ■ Probable riding age: 2½ - 4½.



**Poppet** ■ Custom-designed dolly carrier (complete with dolly's seat belt) gives extra fun value. ■ Fully enclosed chainguard, raised handlebar and short-reach brake lever promote safety and control. ■ Saddle and handlebar adjustment gives 4" of growth. ■ Colour: Pretty Pink. ■ Inside leg: 14"-18". ■ Probable riding age: 2½ - 4½.



**Fun Rider** ■ Fantastic toy town graphics. ■ Tough Mini Mountain Bike style frame and fork. ■ Knobby pneumatic tyres for extra grip and comfort. ■ Colour: Speed Blue. ■ Inside leg: 14"-18". ■ Probable riding age: 2½ - 4½.



**Pirate** ■ Fantastic swashbuckling 14" wheel boys play bike giving excitement, strength and growth potential. ■ Adjustable reach brake levers and removable stabilisers improve riding control and build confidence. ■ Colour: White with Black contrast. ■ Inside leg: 17"-21". ■ Probable riding age: 3½ - 5½.



**Train** ■ Robust tubular steel frame with integral footplate for added fun. ■ Big moulded seat for comfort and growth plus built-in 'carry handle' for parents. ■ Wide front mudguard protects from outdoor splashes. ■ Internal steering stop gives added control. ■ Colour: Blue with Red Contrasts. ■ Inside leg: 14" - 16". ■ Probable riding age: 2½ - 4.



**Banjo** ■ Lively banjo band graphics and tipping bin make play fun and practical. ■ Wide, high-back seat ensures support and allows growth. ■ Compact frame design with steering stop improves trike stability. ■ Colour: Blue with Green contrasts. ■ Inside leg: 12"-14". ■ Probable riding age: 1½ - 3.

**Twinkle** ■ Delightful girls trike with exclusive foil transfers. ■ Sturdy, low step-over frame with integral steering stop for stable riding. ■ Wide moulded seat with enclosed backrail for balance and full support. ■ Colour: Lilac with Pink and Blue contrasts. ■ Inside leg: 11"-13". ■ Probable riding age: 1½ - 3.



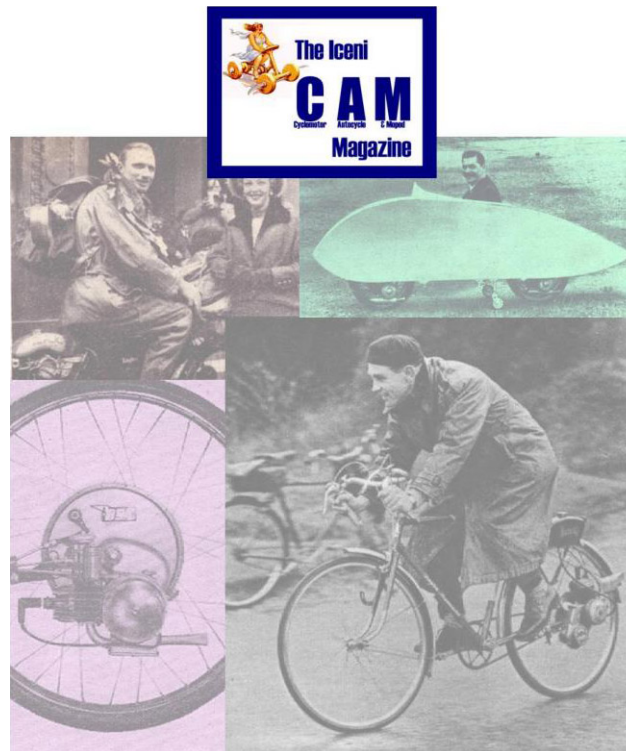
**Jungle** ■ Irresistible jungle character graphics and colour finish. ■ Tough Mini Mountain Bike style frame and fork. ■ Raised handlebar gives improved comfort and control. ■ Colour: Neon Green Vapour. ■ Inside leg: 14"-18". ■ Probable riding age: 2½ - 4½.



**Teddy** ■ Sturdy, low step-over frame with integral steering stop for stable riding. ■ Wide moulded seat with enclosed backrail for balance and full support. ■ Wide, chunky wheels with grooved centre tread for extra grip. ■ Colour: Red with Blue and Yellow contrasts. ■ Inside leg: 11"-13". ■ Probable riding age: 1½ - 3.



# IceniCAM On-Line Library



[www.icenicam.org.uk](http://www.icenicam.org.uk)