

# WIRING WIPAC DIAGRAM

## JAMES "SUPER SWIFT" 250 cc. TWIN DC LIGHTING MODELS PRODUCED FROM OCT. 61.

UNIT FOR SPARES

PART No.

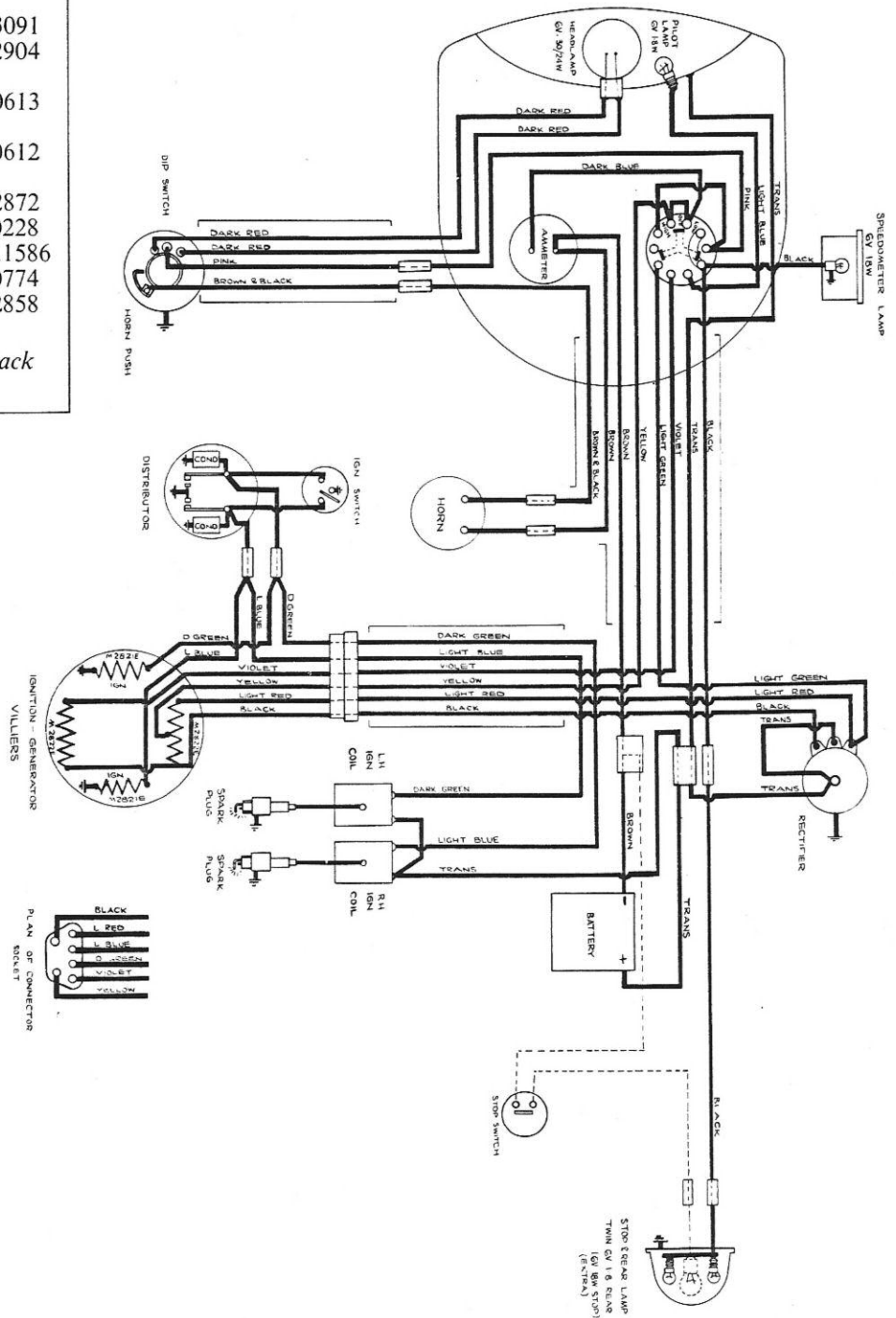
THE WIPAC GROUP

BUCKINGHAM

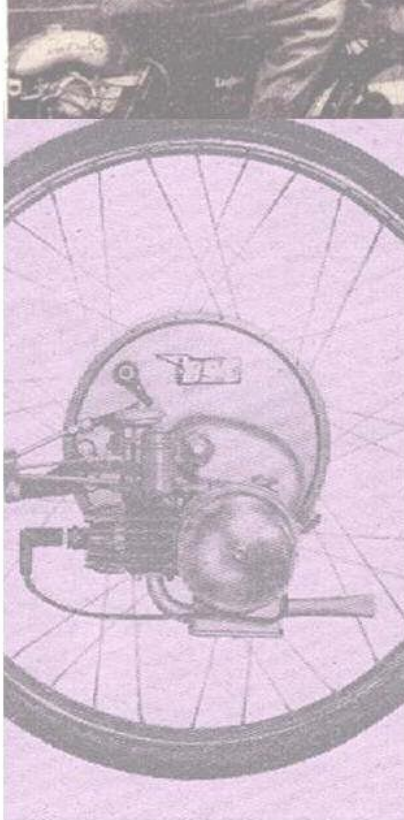
BUCKS

* Headlamp Unit (less Harness)	S3091
Harness (Main)	S2904
Horn and Dipper Switch	S0613
Leads Set (Dipper Switch)	S0612
Stop and Rear Lamp (Quote bulbs required)	S2872
Leads (Rear Lamp)	S0228
Ignition Generator	IG.1586
Stop Switch	S0774
Leads (Stop Switch)	S2858

\* Supplied by Wipac in black only.



# IceniCAM Information Service



[www.icenicam.org.uk](http://www.icenicam.org.uk)