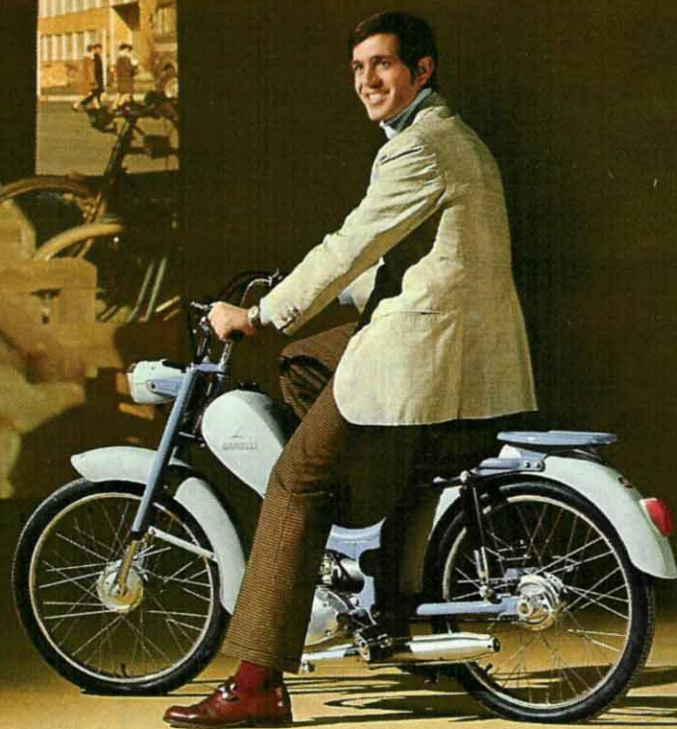




(MOPEDS) **GARELLI M/M3**
unrestable, faithful, always at your service





(MOPEDS) **GARELLI M/M3**
 unrestable, faithful, always at your service

engine and electrical equipment

Engine Garelli 351P (353p) - two stroke - cubic capacity 49 c.c. - bore and stroke 40 x 39 - air cooled - alloy cylinder head - automatic centrifugal clutch. (Model M3: - multidisc clutch in oil bath operated by handlebar lever) - single speed transmission. (Model M3: - constant mesh three speed hand change gear box) - starting by pedals (or kick starter) - chain drive - carburettor. Dell'Orto SHA 14/12 with semi-automatic cold start plunger - ignition and lighting by flywheel magneto - output 6V. 18W. - front headlamp with pilot light indicator - rear tail light with reflector - electromagnetic horn - lighting switch on handlebars.

frame and suspension

Tubular steel frame with pressed steel attachments - petrol tank mounted on the front of frame, capacity 1 gallon - fuel tap with main and reserve position - rear carrier in pressed steel - tool box - chain cover - air inflator - centre stand - telescopic front fork - rear suspension by swinging arm and telescopic suspension units - adjustable seat - wheels with chrome steel rims and 18" x 2.00 tyres - full width hub brakes front and rear.

features and performance

The M and M3 mopeds are ideal machines for the working person who requires an inexpensive and practical means of transport. Their precision built Garelli engine is the guarantee for many thousands miles of trouble-free and economical riding. Both models combine reliability, performance and extra safety features such as large diameter wheels, front and rear suspension, powerful full width hub brakes and excellent road-holding on every terrain. The model M (single speed automatic) has a climbing ability of 1 in 10 and the model M.3. (three speed hand change) of over 1 in 7.

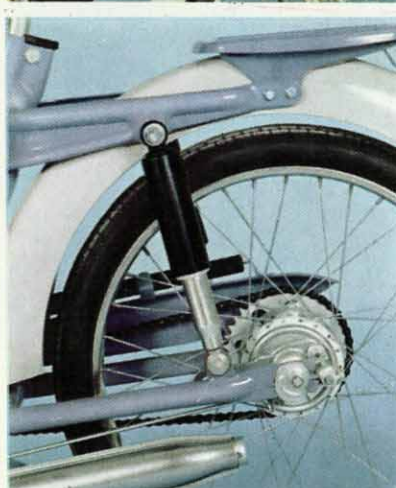
On both models a front carrier complete with chrome wire basket can be fitted on request. The basket is easily detachable and is extremely useful and practical for shopping, carrying parcels etc.

LENGTH 1,760 mm. (68")
 WIDTH 730 mm. (28")
 HEIGHT 1,060 mm. (41")

WEIGHT 46 Kg. (101 lbs)
 PETROL CONSUMPTION 140 miles per gallon.



GARELLI
M/M3





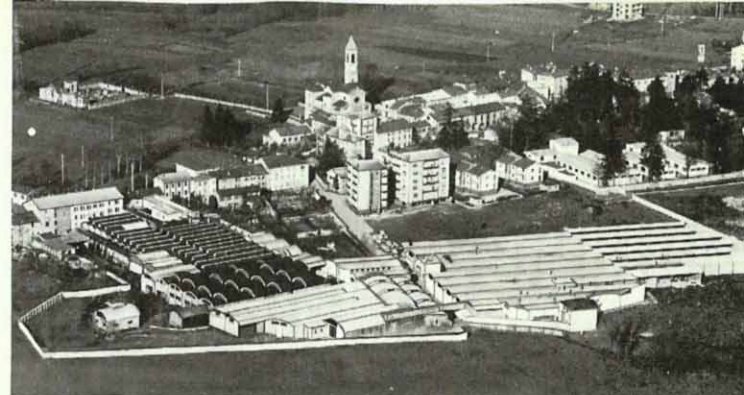
On the experience made for over 50 years of production and after more than 200 World Records won, we are happy to introduce now the

GARELLI M/M3 (MOPEDS)

manufactured in the two large and modern Plants in Monticello and Sesto San Giovanni.



JUNIOR MONZA • RECORD DEL MONDO 24 ORE



Stabilimento **AGRATI** Monticello



Stabilimento **GARELLI** Sesto S. Giovanni

GRUPPO INDUSTRIALE

agrati-GARELLI

**SEDE E STABILIMENTO MECCANICO
MONTICELLO BRIANZA (COMO)**
Telefono 54.491/92/93 (Rete Merate)
Telegrammi: AGRATI MONTICELLO
Filiale di Milano - Viale Monza, 53
Tel 283204-285.0.438

Stabilimento Motori e Ufficio Vendite Veicoli Italia
SESTO S. GIOVANNI - Viale Matteotti, 353
Telefono 247.6.661/62/63/64/65 - Casella Postale 43
Telegrammi: MOSQUITO - SESTO S. GIOVANNI

IceniCAM Information Service



www.icenicam.org.uk