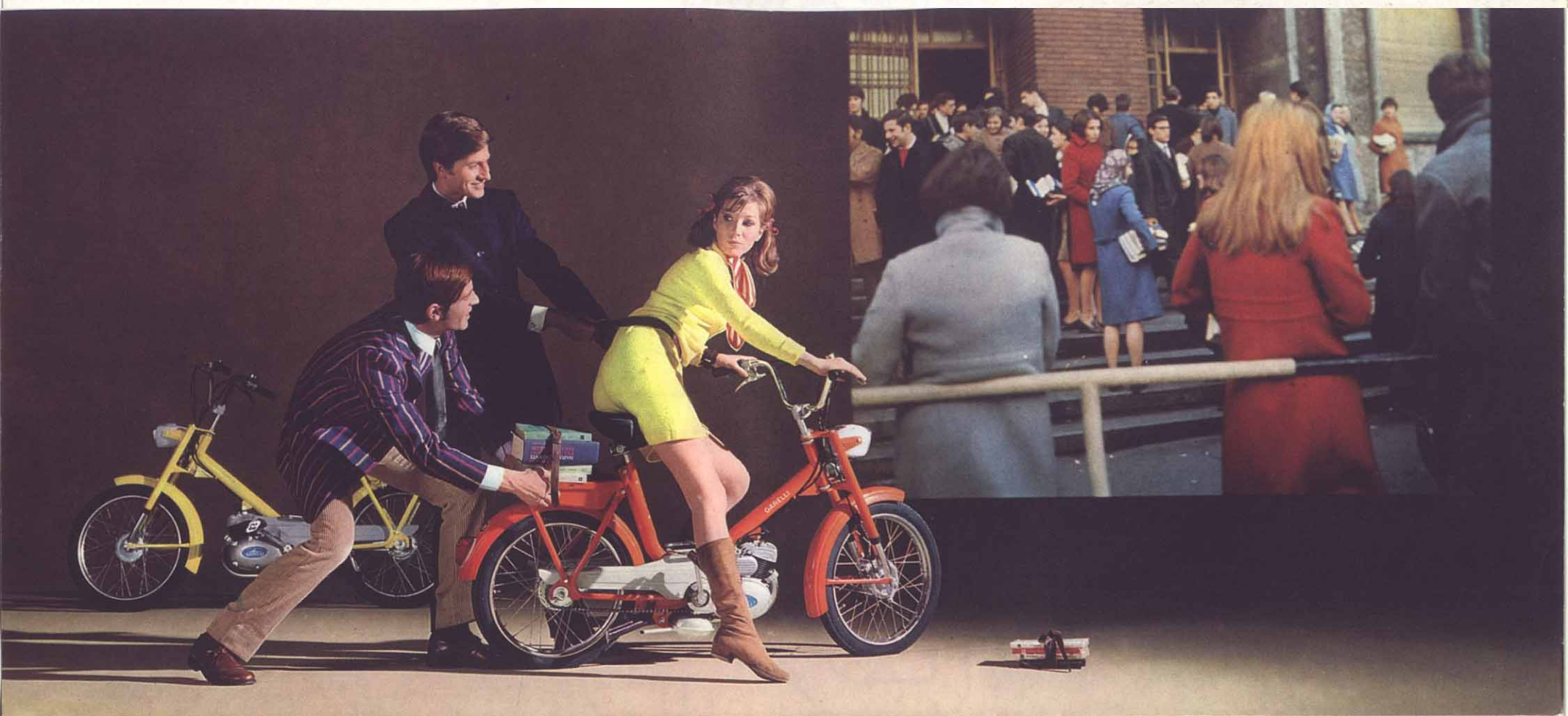




(SUPER MINI MOPED)

# GULP SUPER

young, modern, attractive





(SUPER MINI MOPED)

# GULP SUPER

young, modern, attractive

### engine and electrical equipment

Engine Garelli 351P - two-stroke - cubic capacity 49 c.c. - bore and stroke 40 x 39 - air cooled - alloy cylinder head - fully automatic transmission with centrifugal automatic clutch in oil bath - starting by pedals - chain drive - carburettor Dell'Orto SHA 14/12 with semi-automatic cold start plunger - ignition and lighting by flywheel magneto, output 6V. 18W. - front headlamp with main beam and pilot light with indicator - rear tail light with reflector - electromagnetic horn - lighting switch fitted on handlebar.

### frame and suspension

Sturdy frame in steel tube with pressed steel attachments - petrol tank mounted over rear wheel - tank capacity over 1/2 gallon - fuel tap with main and reserve position - tank fitted with overflow pipe - rear carrier in pressed steel with built-in brackets for the fitting of pannier bags, which are available as extras - tool box incorporated in the petrol tank - chain cover - telescopic front fork - sprung comfortable oscillating saddle with waterproof cover - wheels with large section tyres (16" x 2.25) - full width hub brakes front and rear.

### features and performance

The « Super Mini Moped » combines modern and elegant styling with practical and commonsense features, both the result of more than half a century motorcycle and moped manufacturing. The frame design ensures easy access and comfortable riding position. The centre-balanced and low engine ensures perfect road holding, the large diameter full width hub brakes front and rear operated by two handlebar levers (as on a normal bicycle) allow prompt, efficient and smooth stopping. A practical footrest platform is incorporated, a front carrier can be fitted especially designed to house a chrome wire basket available at extra cost to make shopping an easy and enjoyable task. The « Super Mini- Moped » is riding simplicity itself, thanks to its fully automatic clutch a twist to the throttle grip will enable you to accelerate fast and smoothly from standstill to top speed with a climbing ability of over 1 in 10.

LENGTH 1,700 mm. (66")  
 WIDTH 700 mm. (27")  
 HEIGHT 1,030 mm. (40")

WEIGHT 41.5 kg. (11 lbs)  
 PETROL CONSUMPTION 140 miles per gallon.



# GULP SUPER



# GULP

G0132c



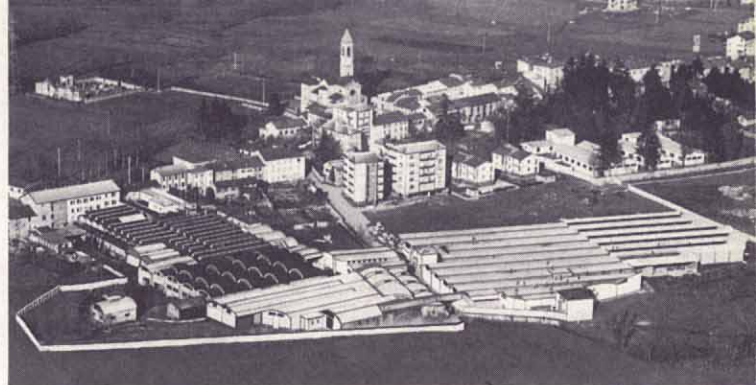
On the experience made for over 50 years of production and after more than 200 World Records won, we are happy to introduce now the

## **GULP SUPER** (SUPER MINI MOPED)

manufactured in the two large and modern Plants in Monticello and Sesto San Giovanni.



JUNIOR MONZA • RECORD DEL MONDO 24 ORE



Stabilimento **AGRATI** Monticello



Stabilimento **GARELLI** Sesto S. Giovanni

GRUPPO INDUSTRIALE

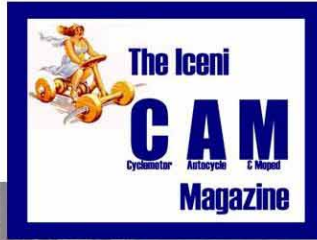
# **agrati-GARELLI**

**SEDE E STABILIMENTO MECCANICO  
MONTICELLO BRIANZA (COMO)**

Telefono 54.491/92/93 (Rete Merate)  
Telegrammi: AGRATI MONTICELLO  
Filiale di Milano - Viale Monza, 53  
Tel 283204-285.0.438

Stabilimento Motori e Ufficio Vendite Veicoli Italia  
SESTO S. GIOVANNI - Viale Matteotti, 353  
Telefono 247.6.661/62/63/64/65 - Casella Postale 43  
Telegrammi: MOSQUITO - SESTO S. GIOVANNI

# IceniCAM Information Service



[www.icenicam.org.uk](http://www.icenicam.org.uk)