

From
'The Bicycle'
10 May 1938

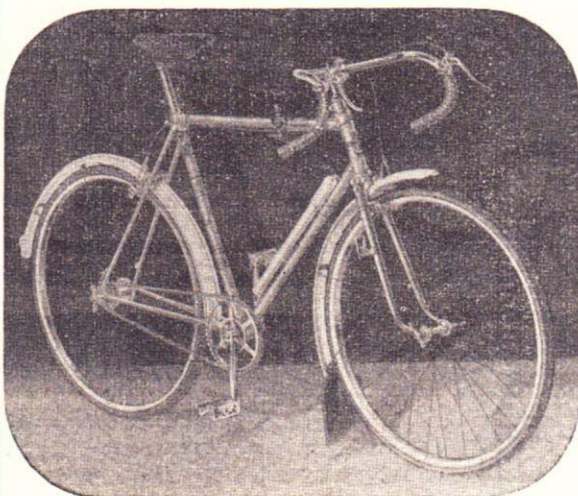
... hand-numbered Town Hall, slight trade done in the past with 1700, and it was the...
sometimes called a Moot Hall, small schooners and brigs. Only (Continued on page 4.)

DAWES USERS ARE NOT CONFINED TO *Mileaters*



● DAWES "ANGLETERRE" MODEL

Upright design frame with 73° head. "531" butted tubing. Chater-Lea fittings. FORK—Special design round semi-straight blades with solid brazed-in ends. Dunlop special lightweight steel rims with depressed spoke holes. "Airlite" hubs. Hyduminium wing or track nuts. Simplex (Professional) 3-speed gear. "Elite" chain Williams C.1000 chainwheel. "Rosaloy" solid centre pedals. Duralumin "Gloria" Tour de France brakes. "Cimali" alloy Tour de France handlebars. "Kromo" stem. Tecalemit lubrication. Finished bright blue Flamboyant, or Pastel Blue "Sheen" with distinctive "Continental" bands and silver panel on seat tube. Chromium-plated head, rear fork ends, and front fork. Weight: Guaranteed not over 24 lbs. without tools. Price £14-0-0



DAWES

CYCLES LIMITED, TYSELEY, BIRMINGHAM

● DAWES "B.A.R." MODEL

An outstanding DAWES production with SUPER "SHEEN" FINISH IN PASTEL BLUE and SILVER, with distinctive "Continental" bands. "531" tubing. Upright frame. Lightened lugs. Chromium plated Russ or A. & P. fork. NEW STURMEY-ARCHER "A.R." ULTRA-CLOSE RATIO 3-SPEED. Two Monitor "Climax" Calliper brakes. Continental bend. Williams chainwheel. Brooks B.15 saddle. "Sprite" tyres. Celluloid guards. Wheelbase 41½". Weight 27½ lbs. Price £8-15-0

...ou
ying
ach."

plea-
eben,
ng a
yside
lands
e is a
ictur-
port,
air of
tran-
It has
gotten
bridge
as a
town
Nor-
now
ship-

ood-
of
yth.
ble,
ave
are
and
mag-
om-
s.
rt,"
d, I
of
oy."
old
dia-
One

izes
ath,
be

a."
that
rish-
s all
vent
ing's
outh
one
ports
wing
our,
ntry
the

been
The
Win-
who
ful,