

GOOD PROSPECTS IN SUFFOLK FOR DUTCH-MADE ANKERMATIC MOPED

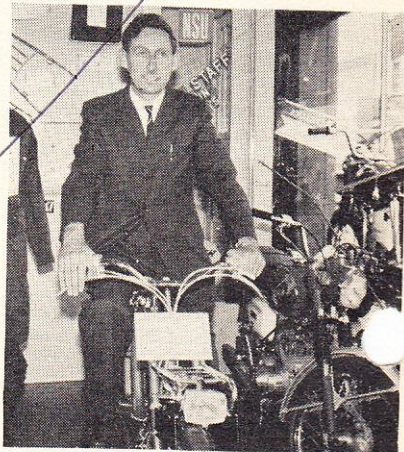
British weather, rather than taxation, licensing, compulsory insurance and the like is the main factor against bulk sales of mopeds, scooters and small powered two-wheelers, says Derrick Smith — manager of the motor cycle division of Bolton's (Ipswich) Ltd., of Barrack Corner Ipswich.

In spite of this Ipswich is surely one of the eastern counties top-ranking towns for moped sales and no business in the motor cycle trade is better known in Ipswich than Bolton's with its corner site, large stocks and immaculate showrooms.

Here, as elsewhere, under 50cc sales are the big feature of the 1967 selling season and, says Mr. Smith, the exceptionally fine weather earlier in the summer brought a boost to sales. If only, he says with a smile, we could be guaranteed south of France weather for six or nine months a year, then we could do some real moped and scooter business.

leaving school. Sales now, he says, are coming from both sides; the bicycle owner keen to get into power and particularly attracted by the new breed of moped of which the Ankermatic is a prime example and the car owner wishing for a second string runabout requiring little storage space and being economical to run.

DUTCH DOUBLE. Pro-Dutch moped man Derrick Smith, of Bolton's (Ipswich) astride the Dutch-made Ankermatic moped at Bolton's Norwich Road depot.



Best seller

One of the surprises of the season for Bolton's has been the way in which the Dutch Ankermatic moped has sold — it's now one of the firm's best sellers. This machine, says Mr. Smith, incorporates much that I have been looking for to build-up local moped sales. The town has some thousands of people living five or six miles from their place of employment, with in places some rough road surfaces; and when they buy a moped they want utter reliability with good assembly coupled with automatic transmission and telescopic suspension. This they get with the Ankermatic and further bonus points appealing to East Anglian buyers are the built-in steering lock and the machine's front and rear carrier system.

Retailing at under £60 the Ankermatic, says Mr. Smith, looks like the answer to the longer commuting distances involved in the growing towns of the south east Suffolk area.

In the business for more than 40 years Bolton's are one of Suffolk's largest motoring retailers with modern garage premises in Norwich Road, Ipswich and at Barrack Corner on the Norwich Road. Derrick Smith started with the firm on

Dennis Craine to live in Australia

A Greeves machine will shortly be shipped out to Australia to enable Manx motor-cycle sportsman, Dennis Craine, to continue his scrambling when he arrives 'down under'.

Dennis, until recently manager of the Salisbury Garage in Douglas, will be sailing in a few weeks' time and, with his wife and two children, will start his new life near Perth, Western Australia, where he will work as a motor-cycle mechanic.

Dennis Craine was many times IOM scramble champion and winner of the 1965 MGP Lightweight. He was also Gold Medallist in the East German International Six Day Trials in 1963 and winner of a bronze in the 1965 Manx ISDT.

Newcastle dinner

Newcastle NA branch is to hold its dinner and dance on October 25 at the Bath Assembly Rooms, Tyne-mouth. Tickets are available from G. Dobson, The Cycle Store, High Street, Gosforth, Newcastle upon Tyne.

BRIGHTON 1968 FAIR NEWS

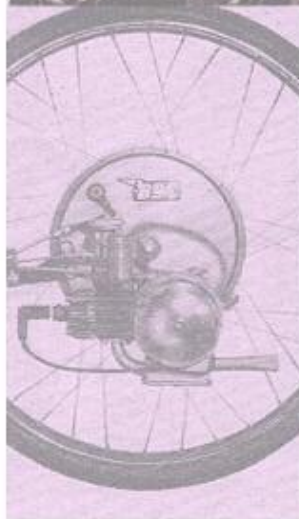
Toy buyers from all parts of the UK and from over 40 countries will be converging upon Brighton for the 15th British Toy Fair, which takes place January 28 until February 1, 1968.

More than 300 British toy manufacturers and representatives of important overseas firms from 22 countries, will be at the Fair.

To allow for this year's expansion of the fair, five venues will be utilized; they are the Hotel Métropole and its five spacious exhibition halls, the display areas of the adjacent Grand Hotel, the newly-built Bedford Hotel and the Top Rank Centre, all grouped together on the seafloor. The centrally situated Corn Exchange and the Dome will also house a number of British and overseas toy manufacturers.

Dealers wishing for full information should contact the Organizer of the 15th British Toy Fair, J. A. Glanfield, British Toy Fairs (International) Ltd., Regent House, 89 Kingsway, London, W.C.2.

IceniCAM Information Service



www.icenicam.org.uk