

No. 2246. Vol. LXXXVII.

31  
**FRICION AND  
BRAKE BLOCKS**

February 16, 1934.

2<sup>D</sup>

# CYCLING

Circulation Exceeds 60,000 Copies Weekly

## ABERDALE CYCLE CO.'S NEW FACTORY

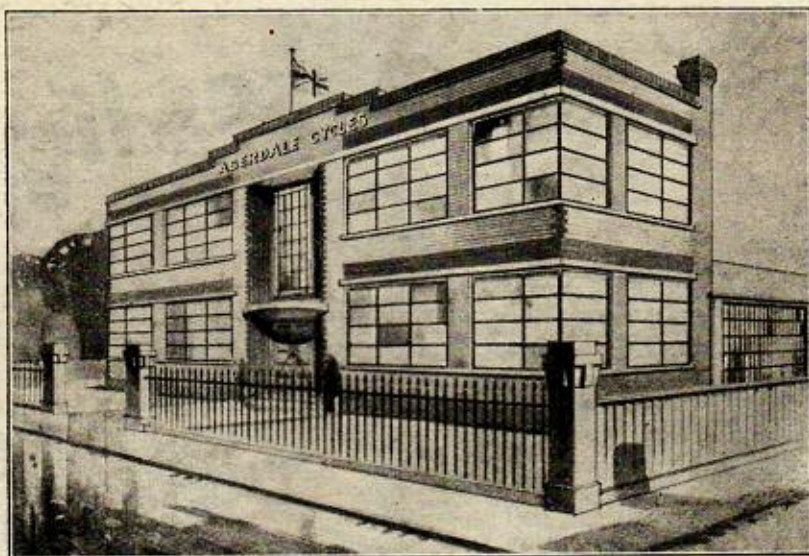
The newly built factory of the Aberdale Cycle Co., Ltd., at Edmonton, North London, which was opened at the beginning of February, will, it is anticipated, be turning out bicycles at the rate of 2,500 a week very shortly. Bridport Works, as the factory has been named, covers an area of approximately 30,000 sq. ft., and has

432

been equipped with the newest type of plant and machinery for sand-blasting, polishing, rust-proofing, rubber coating and enamelling. In addition, a large up-to-date chromium-plating plant has been installed. The layout of the factory has been carefully planned on a system of flow production, so that work is commenced on the raw material at

the one end and completed and finished articles, ready for delivery, at the other.

Mr. A. Levy, the managing director of the company, told a *Cycling* representative that as a result of their new manufacturing and delivering facilities it was hoped that his company would now be well able to secure a good deal of the London and South of England trade that has hitherto been dealt with in the Midlands.



The newly opened Aberdale Cycle Co.'s works at Edmonton, London.