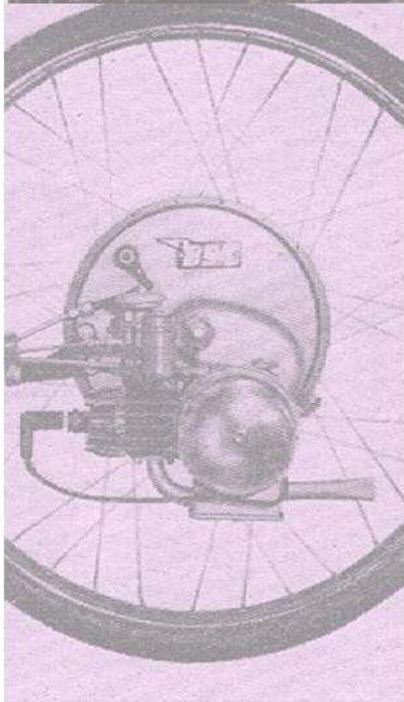


IceniCAM Information Service



www.icenicam.org.uk

MARTIN ASHBY MOTORCYCLES

MOTORCYCLE REPAIRS
SPEEDWAY ENGINE REBUILDS
MOTORCYCLE SPARES & ACCESSORIES
M.O.T. TESTS

Chantry Lane, High Street, Marlborough, Wilts
Tel. (0672) 514065 SN8 1HE

To mo >

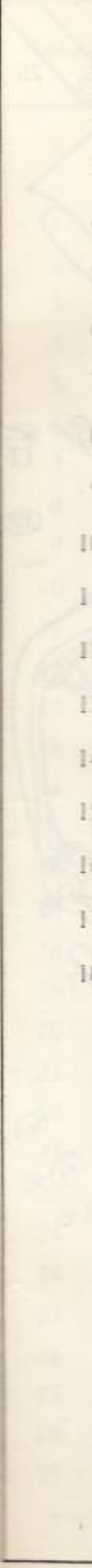
A 3MS
ECT

3405

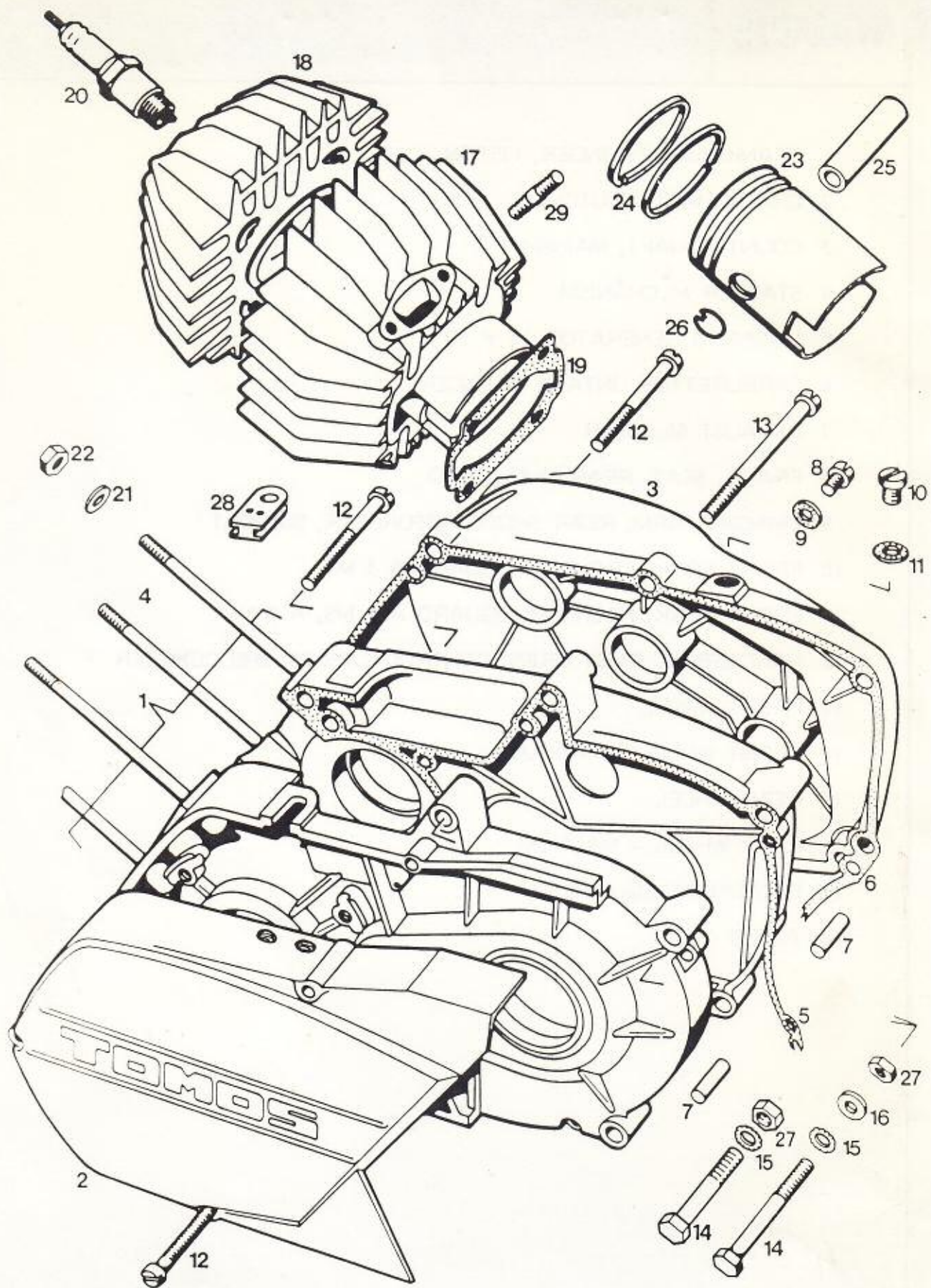
TOMOS AUTOMATIC 3 M
TOMOS AUTOMATIC 3 ML
TOMOS AUTOMATIC 3 MS

spare parts catalogue

THE UNIVERSITY OF
TORONTO LIBRARY
130 St. George Street
Toronto, Ontario M5S 1A5



- 1 CRANKCASE, CYLINDER, PISTON
- 2 CRANKSHAFT, CLUTCH
- 3 COUNTERSHAFT, MAINSHAFT
- 4 STARTER MECHANISM
- 5 MAGNETO GENERATOR 12 V 50 W
- 6 CARBURETTOR, INTAKE SILENCER
- 7 EXHAUST SILENCER
- 8 FRAME, SEAT, REAR MUDGUARD
- 9 SWINGING ARM, REAR SHOCK ABSORBER, SUPPORT
- 10 FRONT FORK, FRONT MUDGUARD A 3 M
- 11 FRONT FORK, FRONT MUDGUARD A 3 MS, A 3 ML
- 12 HANDLEBAR, TWIST GRIPS, CONTROL CABLES, SPEEDOMETER
- 13 FRONT WHEEL
- 14 FRONT WHEEL - MAGNUM
- 15 REAR WHEEL
- 16 REAR WHEEL - MAGNUM
- 17 ELECTRICAL EQUIPMENT
- 18 TOOLS



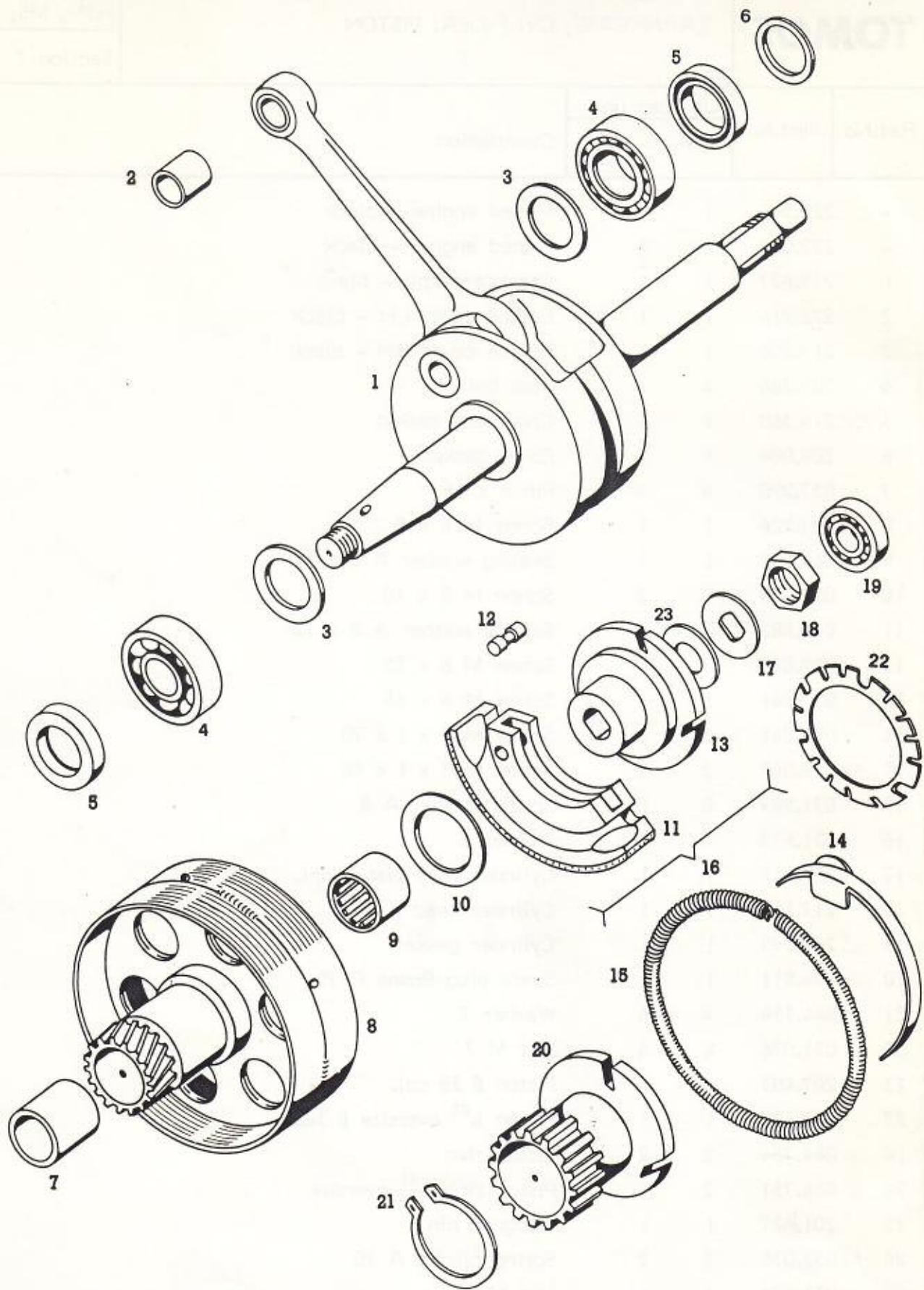
TOMOS

CRANKCASE, CYLINDER, PISTON

A3M, MS, ML

Section 1

Ref.No	Part.N	Qty per unit		Description
		3 M	3 MS 3 ML	
-	222.341	1	-	Moped engine - black
-	222.001	-	1	Moped engine - black
1	219.627	1	1	Crankcase cpl. - black
2	222.214	1	1	Engine cover LH - black
3	217.206	1	1	Engine cover RH - black
4	205.386	4	4	Stud bolt
5	219.368	1	1	Crankcase gasket
6	209.084	1	1	Cover gasket
7	037.290	4	4	Pin 6 x 16
8	027.226	1	1	Screw M 6 x 8
9	044.581	1	1	Sealing washer A 6 x 12
10	027.239	2	2	Screw M 8 x 10
11	044.582	2	2	Sealing washer A 8 x 14
12	027.082	17	17	Screw M 6 x 25
13	027.041	1	1	Screw M 6 x 65
14	026.041	2	2	Screw M 8 x 1 x 70
14	026.043	2	2	Screw M 8 x 1 x 80
15	031.989	8	8	Spring washer A 8
16	031.933	4	4	Washer 8
17	209.114	1	1	Cylinder with piston cpl.
18	217.123	1	1	Cylinder head
19	202.395	1	1	Cylinder gasket
20	044.511	1	1	Spark plug Bosna F 75
21	044.154	4	4	Washer 7
22	031.076	4	4	Nut M 7
23	207.403	1	1	Piston Ø 38 cpl.
23	202.420	1	1	Piston 1. st oversize Ø 38.5
24	044.754	2	2	Piston ring
24	044.751	2	2	Piston ring 1. st oversize
25	201.627	1	1	Gudgeon pin
26	032.038	2	2	Spring circlip A 10
27	031.124	4	4	Nut M 8 x 1
28	201.104	1	1	Rubber insert piece
29	208.201	2	2	Stud bolt
-	209.787	1	1	Set of gaskets



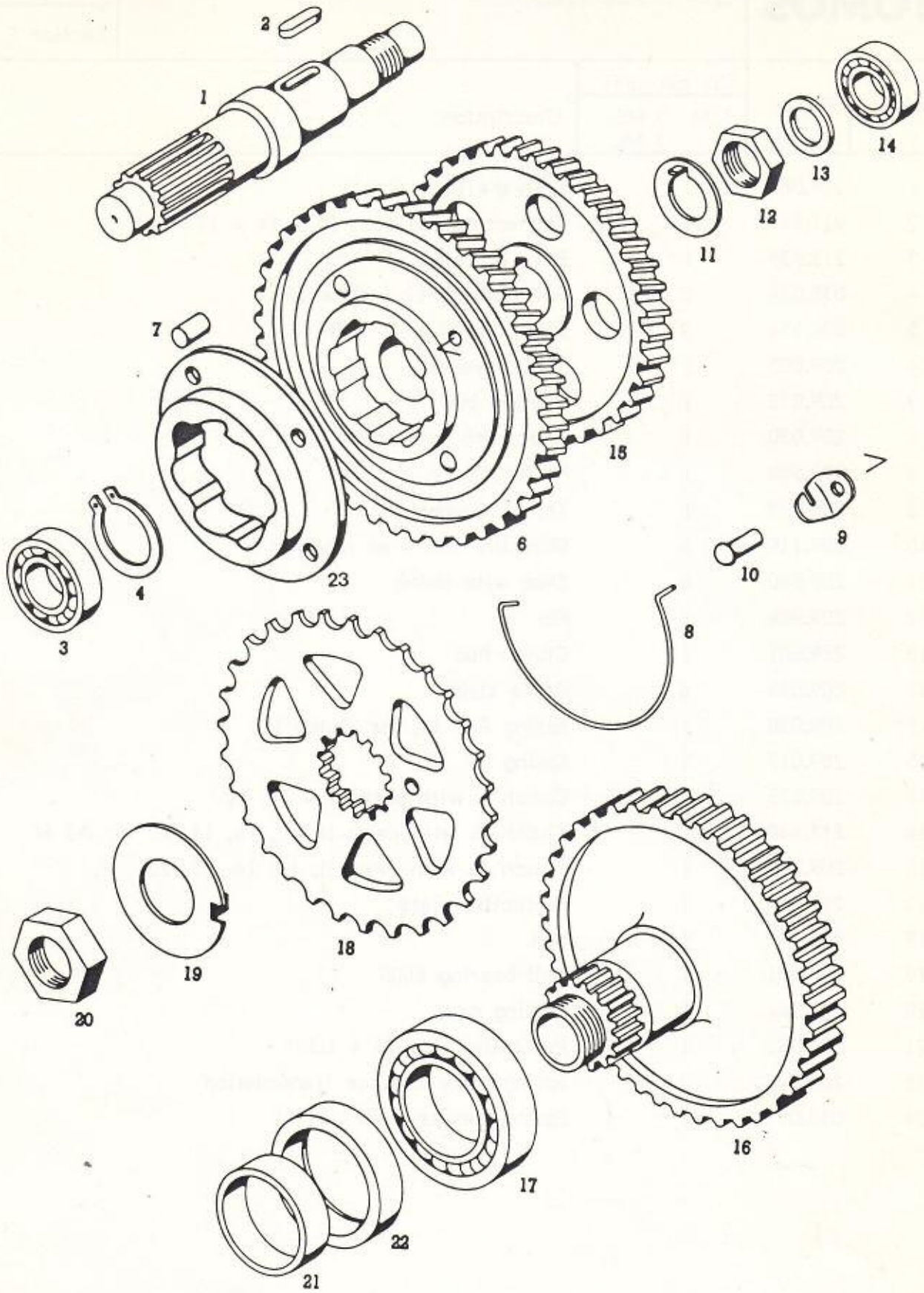
TOMOS

CRANKSHAFT, CLUTCH

A3M, MS, ML

Section 2

Ref.No.	Part.N	Qty per unit		Description
		3 M	3 MS 3 ML	
1	209.088	1		Crankshaft
2	211.641	1		Connecting rod bush 10 x 14 x 13
3	212.959	1		Shim 0.2 mm
4	035.074	2		Ball bearing 17 x 40 x 12
5	036.554	2		Seal ring 17 x 35 x 8
6	209.005	1		Thrust washer
7	209.072	1		Bearing bush
8	209.030	1		Gear with two drums
9	035.504	1		Roller clutch
10	209.073	1		Thrust washer
10	209.119	1		Shim 0.5 mm - as required
11	209.040	6		Shoe with lining
12	209.004	6		Pin
13	209.001	1		Clutch hub
14	209.039	6		Brake strip
15	209.038	1		Spring A 3 M, for clutch II.
15	209.013	1		Spring
16	209.035	1		Clutch I. with parts II - 15, 22
16	213.448	1		Clutch II. with parts II, 12, 14, 15, 20 for A3 M
16	209.043	1		Clutch II. with parts II, 12, 14, 15, 20
17	209.074	1		Protective plate
18	200.157	1		Nut
19	035.031	1		Ball bearing 6000
20	209.044	1		Driving gear
21	032.082	1		Protective ring 26 x 1.2
22	209.002	1		Spring plate I. stage transmission
23	030.097	1		Spring washer B 25



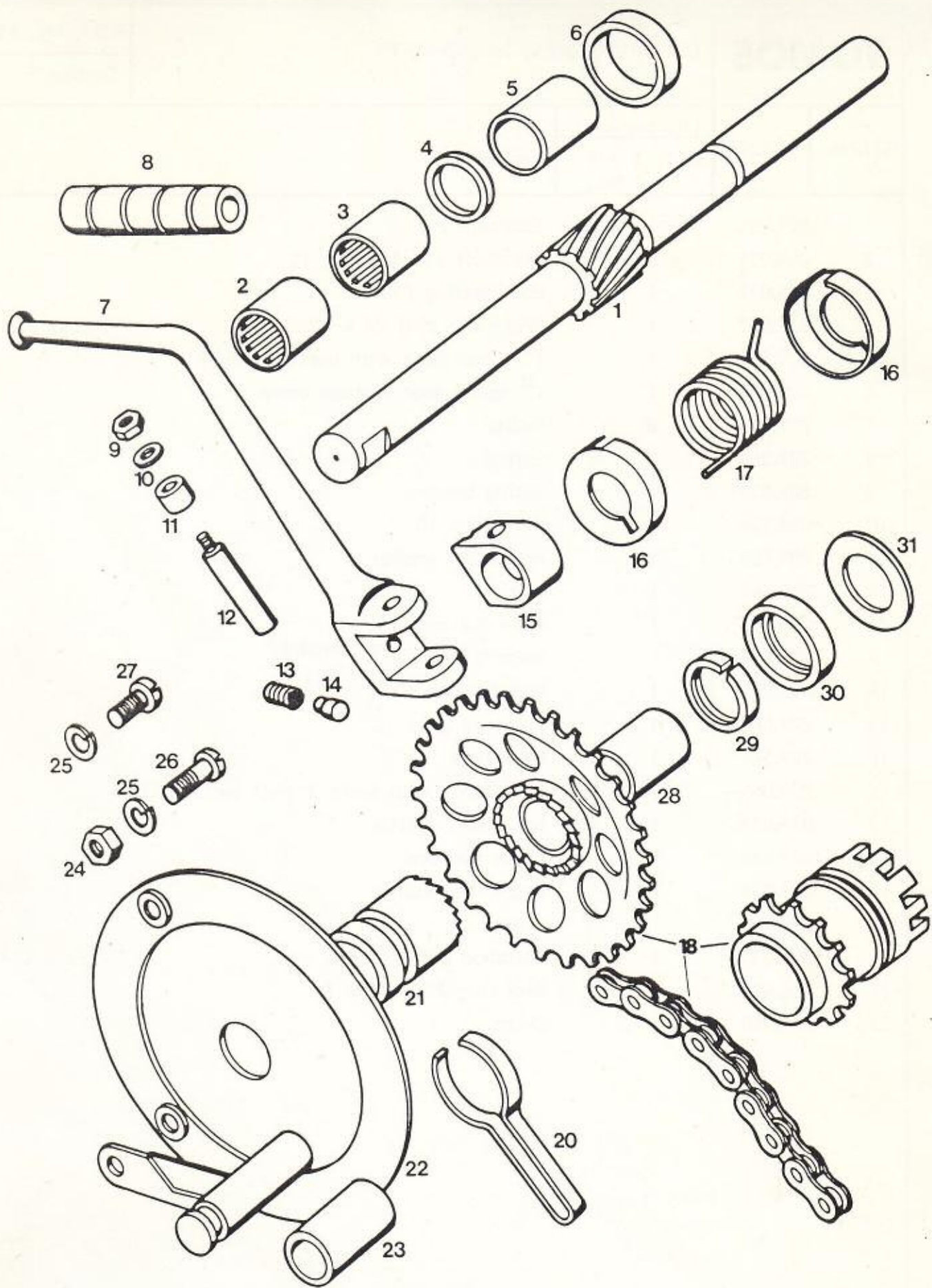
TOMOS

COUNTERSHAFT, MAINSHAFT

A3M, MS, ML

Section 3

Ref.No.	Part.N	Qty per unit			Description
		3 M	3 MS	3 ML	
1	209.054	1			Countershaft
2	044.835	1			Woodruff key 5 x 5 x 12
3	035.072	1			Ball bearing 6201
4	032.077	1			Protective ring 20 x 1.2
6	209.055	1			1 st speed gear with part 23, 10, 9
6	209.056	1			1 st speed gear without drum
7	209.063	8			Roller
8	209.064	1			Spring
9	209.059	1			Spring holder
10	034.126	4			Rivet 3 x 10
11	209.062	1			Protective washer
12	200.141	1			Nut
13	209.075	1			Shim 0.2 mm
-	209.076	1			Shim 0.5 mm } as required
14	035.031	1			Ball bearing 6000
15	209.060	1			II. speed gear
16	209.544	1			Mainshaft
16	209.066	1			Mainshaft (with parts 2 and 3 section 4)
17	035.037	1			Ball bearing 6006
18	209.078	1			Chain sprocket
19	209.079	1			Protective washer
20	209.080	1			Nut
21	209.077	1			Distance bush
22	036.620	1			Seal ring 35 x 47 x 7
23	209.058	1			Drum



TOMOS

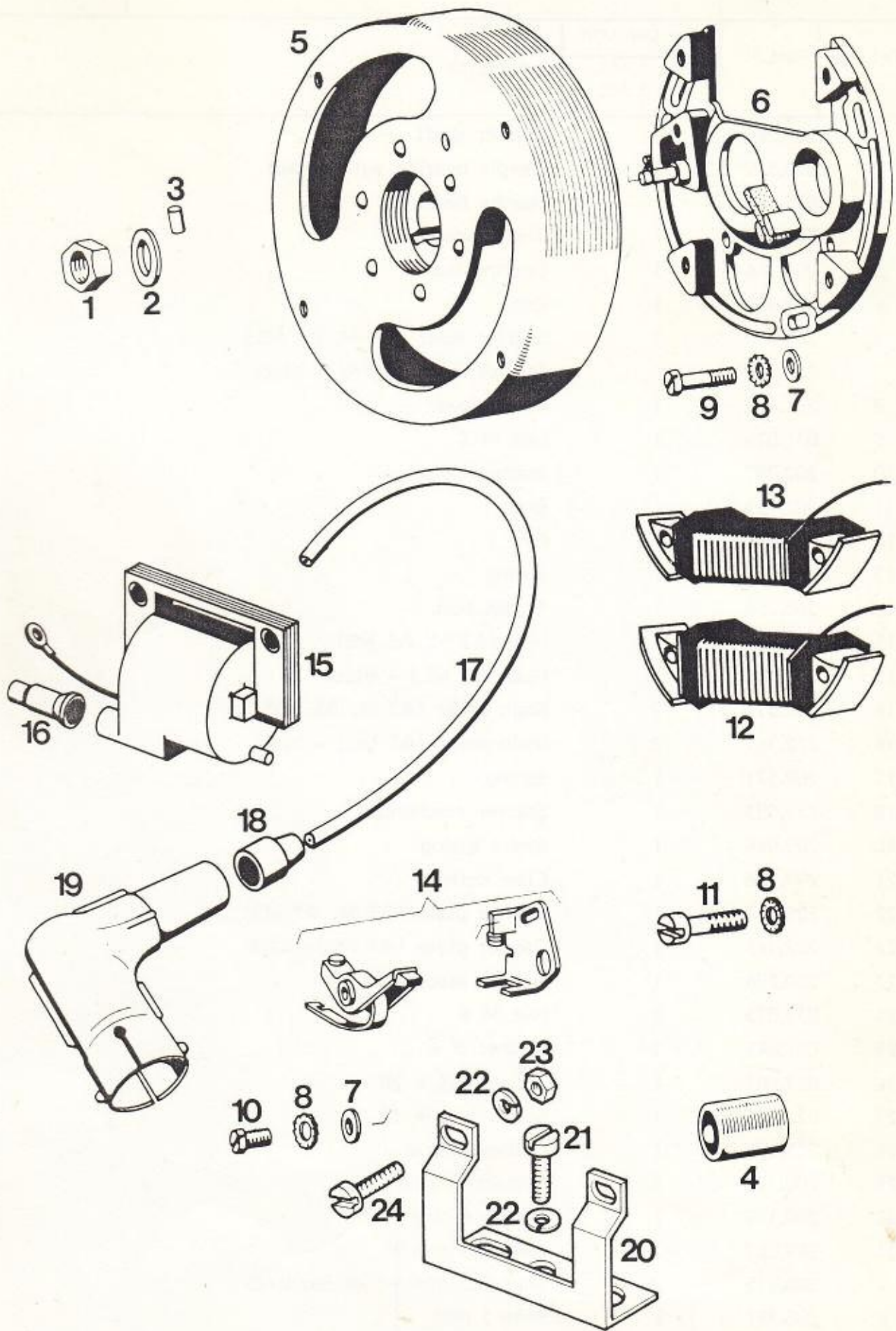
STARTER MECHANISM

A3M, MS, ML

Section 4

Ref.No.	Part.N	Qty per unit		Description
		3 M	3 MS 3 ML	
1	209.564	1		Starter shaft
2	035.502	1		Needle bearing with gasket
3	035.503	1		Needle bearing
4	205.702	1		Thrust washer
5	200.166	1		Bearing bush
6	209.577	1		Cup
7	208.875	1		Starter lever (A3 M, A3 MS)
7	222.362	1		Starter lever A3 ML - black
8	201.487	1		Lever cover
9	031.076	1		Nut M 7
10	202.727	1		Washer
11	202.723	1		Bush
12	202.726	1		Pin
13	260.217	1		Spring
14	260.216	1		Thrust bolt
15	205.812	1		Hub (A3 M, A3 MS)
15	222.406	1		Hub (A3 ML) - black
16	209.572	2		Main cover (A3 M, A3 MS)
16	222.367	2		Main cover (A3 ML) - black
17	209.571	1		Spring
18	217.583	1		Starter mechanism
20	209.048	1		Brake spring
21	209.566	1		Claw collar
22	209.567	1		Carrier plate (A3 M, A3 MS)
22	222.361	1		Carrier plate (A3 ML) - black
23	200.294	1		Rubber stopper
24	031.075	1		Nut M 6
25	031.845	2		Washer B 6
26	027.081	1		Screw M 6 x 20
27	027.078	1		Screw M 6 x 12
28	209.052	1		Distance tube
29	200.173	1		Protective ring
30	200.172	1		Distance ring
31	209.087	3		Shim 0.2 mm
-	200.175	2		Shim 0.5 mm
-	206.391	1		Shim 1 mm

} as required



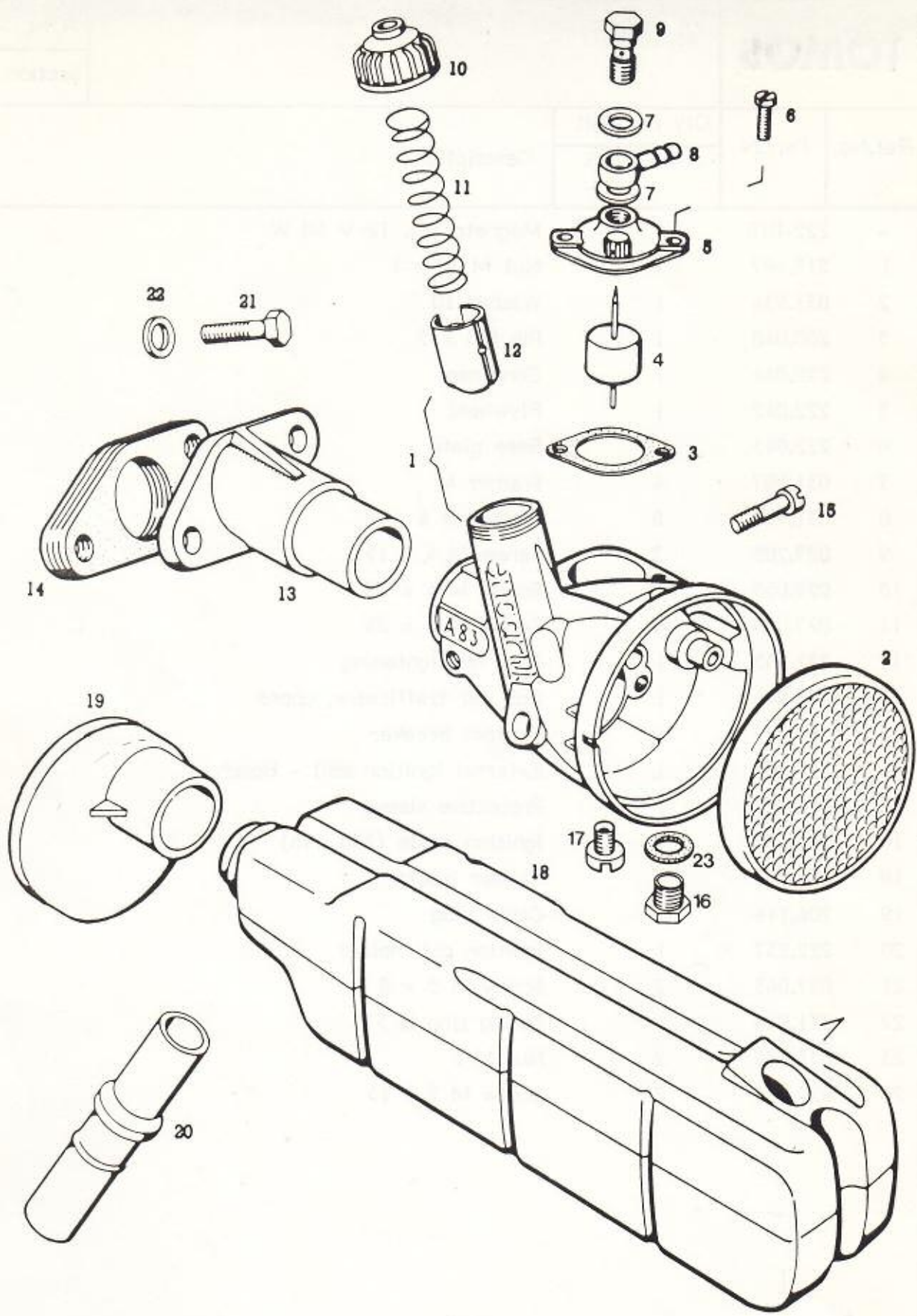
TOMOS

MAGNETO

A3M, MS, ML

Section 5

Ref.No.	Part.N	Qty per unit		Description
		3 M	3 MS 3 ML	
-	222-010	1		Magneto cpl. 12 V 50 W
1	215.487	1		Nut M 10 x 1
2	031.934	1		Washer 10
3	200.048	1		Pin \emptyset 3 x 5
4	222.044	1		Condenser
5	222.042	1		Flywheel
6	222.043	1		Base plate
7	031.507	4		Washer 4
8	031.999	8		Washer B 4
9	027.205	3		Screw M 4 x 15
10	027.053	1		Screw M 4 x 10
11	027.058	4		Screw M 4 x 25
12	222.045	1		Coil for lightening
13	222.046	1		Coil for trafficator, upper
14	204.277	1		Contact breaker
15	219.509	1		External ignition coil - Bosch
16	210.175	1		Protective sleeve
17	044.528	-		Ignition cable (230 mm)
18	206.917	1		Rubber insert
19	206.116	1		Cable plug
20	222.237	1		Ignition coil holder
21	027.063	2		Screw M 5 x 8
22	031.844	4		Spring ring B 5
23	031.074	2		Nut M 5
24	027.066	2		Screw M 5 x 15



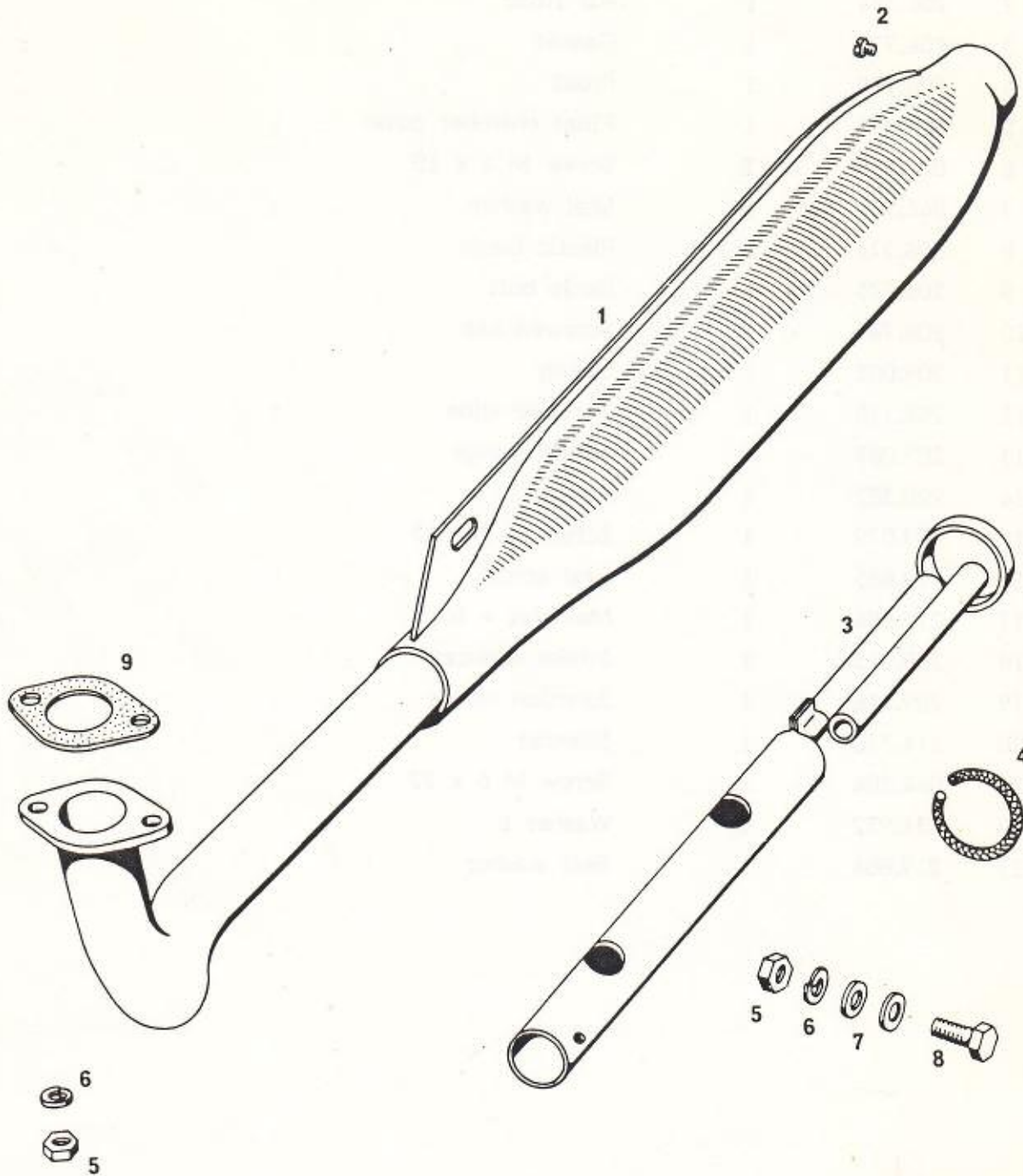
TOMOS

CARBURETTOR, INTAKE SILENCER

A3M, MS, ML

Section 6

Ref.No.	Part.N	Qty per unit			Description
		3 M	3 MS	3 ML	
1	219.883	1			Carburettor
2	200.384	1			Air filter
3	206.771	1			Gasket
4	206.770	1			Float
5	206.772	1			Float chamber cover
6	027.053	2			Screw M 4 x 10
7	044.584	2			Seal washer
8	206.773	1			Plastic banjo
9	206.775	1			Banjo bolt
10	206.763	1			Screwed cap
11	209.003	1			Spring
12	209.118	1			Throttle slide
13	209.085	1			Intake flange
14	200.382	1			Gasket
15	027.079	1			Screw M 5 x 15
16	219.885	1			Seal screw
17	219.884	1			Main jet = 50
18	209.215	1			Intake silencer
19	209.216	1			Junction sleeve
20	214.330	1			Silencer
21	044.284	1			Screw M 6 x 22
22	031.932	2			Washer 6
23	219.886	1			Seal washer



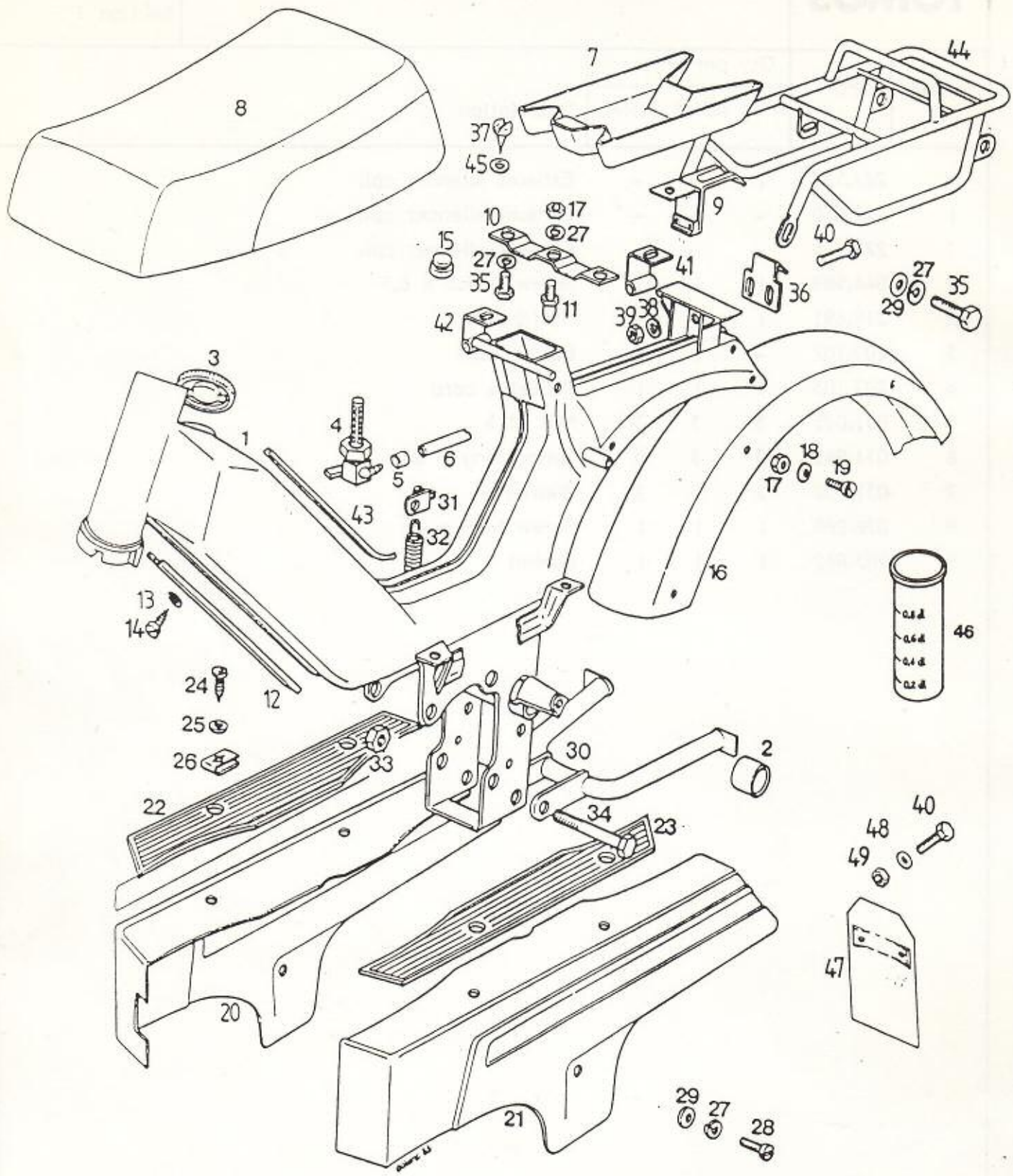
TOMOS

EXHAUST SILENCER

A3M, MS, ML

Section 7

Ref.No.	Part.N	Qty per unit			Description
		A3M	A3MS	A3ML	
1	222.522	1	-	-	Exhaust silencer cpl.
1	222.630	-	1	-	Exhaust silencer cpl.
1	222.105	-	-	1	Exhaust silencer cpl.
2	044.588	1	1	1	Screw A 3.5 x 6.5
3	219.691	1	-	-	Baffle tube
3	207.102	-	1	1	Baffle tube
4	207.103	1	1	1	Asbestos cord
5	031.075	3	3	3	Nut M 5
6	031.845	3	3	3	Spring ring B 6
7	031.932	2	2	2	Washer 6
8	026.288	1	1	1	Screw M 6 x 15
9	203.862	1	1	1	Gasket



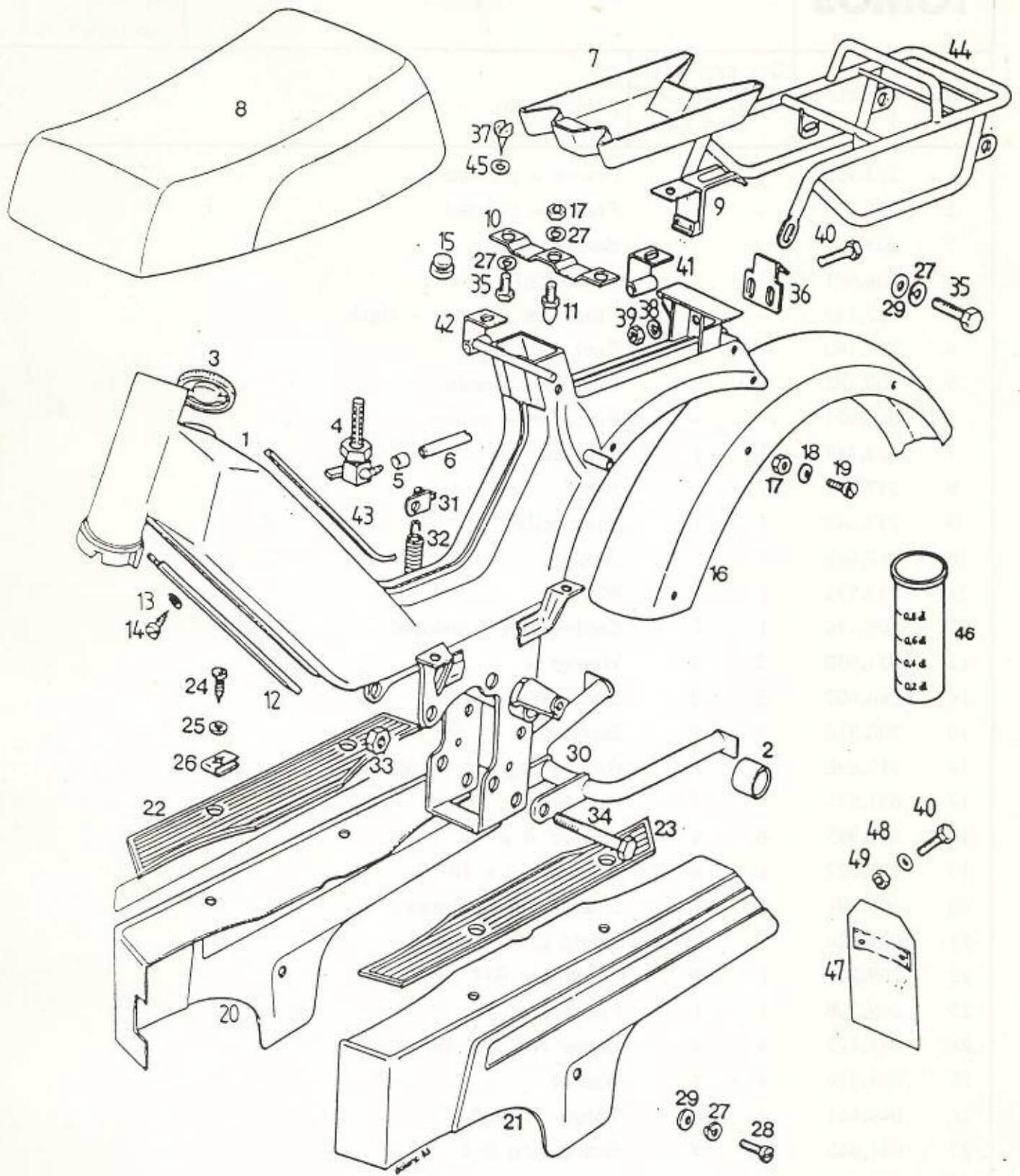
TOMOS

FRAME, SEAT, REAR MUDGUARD

A3M, MS, ML

Section 8

Ref.No.	Part.N	Qty per unit		Description
		3 M	3 MS 3 ML	
1	222.728	1	-	Frame - painted
1	222.730	-	1	Frame - painted
2	209.141	2	2	Bearing bush
3	206.401	1	1	Filler cap
3	222.145	-	1	Filler cap A3 ML - black
4	209.140	1	1	Fuel feed tap
5	200.592	2	2	Fuel line ferrule
6	044.531	-	-	Fuel line - meter
7	222.317	1	1	Tool bag
8	217.492	1	1	Seat
9	217.647	1	1	Seat holder
10	217.646	1	1	Support
11	217.771	1	1	Pin
12	209.176	1	1	Cable cover - painted
13	031.930	2	2	Washer 4
14	044.407	2	2	Screw A 4.2 x 9.5
15	200.516	2	2	Bumper
16	219.696	1	1	Rear mudguard - painted
17	031.075	7	7	Nut M 6
18	031.995	6	6	Washer A 6
19	027.227	6	6	Screw M 6 x 10
20	209.201	1	1	Shield RH - painted
21	209.204	1	1	Shield LH - painted
22	209.207	1	1	Footboard RH
23	209.208	1	1	Footboard LH
24	044.423	4	4	Screw A 4.2 x 19
25	211.914	4	4	Washer
26	044.441	4	4	Thrust nut 4.2
27	031.845	9	9	Spring ring B 6
28	027.077	2	2	Screw M 6 x 10
29	031.932	4	4	Washer 6
30	209.145	1	1	Centre prop stand - painted
31	209.143	1	1	Spring carrier
32	200.609	1	1	Spring
33	031.124	1	1	Nut M 8 x 1



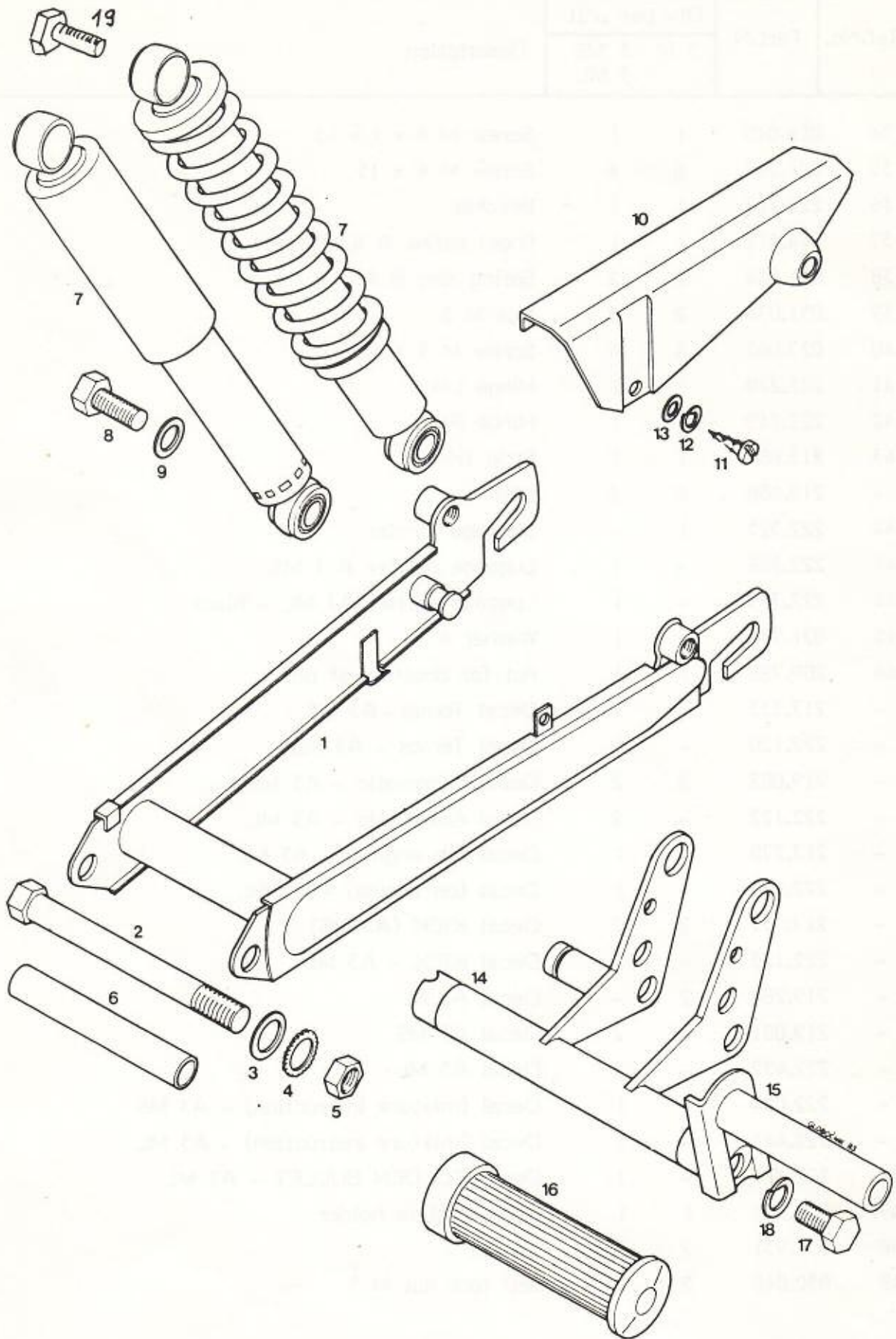
TOMOS

FRAME, SEAT, REAR MUDGUARD

A3M, MS, ML

Section 8

Ref.No.	Part.N	Qty per unit		Description
		3 M	3 MS 3 ML	
34	026.040	1	1	Screw M 8 x 1 x 65
35	026.288	6	6	Screw M 6 x 15
36	222.227	1	1	Bracket
37	044.412	1	1	Sheet screw A 4,2 x 16
38	031.844	2	2	Spring ring B 5
39	031.074	2	2	Nut M 5
40	027.065	4	4	Screw M 5 x 12
41	222.228	1	1	Hinge LH
42	222.249	1	1	Hinge RH
43	213.687	1	1	Strip trim
-	213.688	6	6	Clip
44	222.325	1	-	Luggage carrier
44	222.398	-	1	Luggage carrier A 3 MS
44	222.399	-	1	Luggage carrier A3 ML - black
45	031.930	1	1	Washer 4
46	209.726	1	1	Pot for dosation of oil
-	217.733	1	1	Decal Tomos - A3 MS
-	222.120	-	1	Decal Tomos - A3 ML
-	219.002	2	2	Decal Automatic - A3 MS
-	222.122	-	2	Decal Automatic - A3 ML
-	217.278	1	1	Decal (on engine) - A3 MS
-	222.124	-	1	Decal (on engine) - A3 ML
-	217.737	2	2	Decal KICK (A3 MS)
-	222.123	-	2	Decal KICK - A3 ML
-	219.284	2	-	Decal A3 M
-	219.001	-	2	Decal A3 MS
-	222.432	-	2	Decal A3 ML
-	222.007	1	1	Decal (mixture instruction) - A3 MS
-	222.443	-	1	Decal (mixture instruction) - A3 ML
-	222.121	-	1	Decal GOLDEN BULLET - A3 ML
47	219.392	1	1	Number plate holder
48	031.931	2	2	Washer 5
49	030.048	2	2	Self lock nut M 5



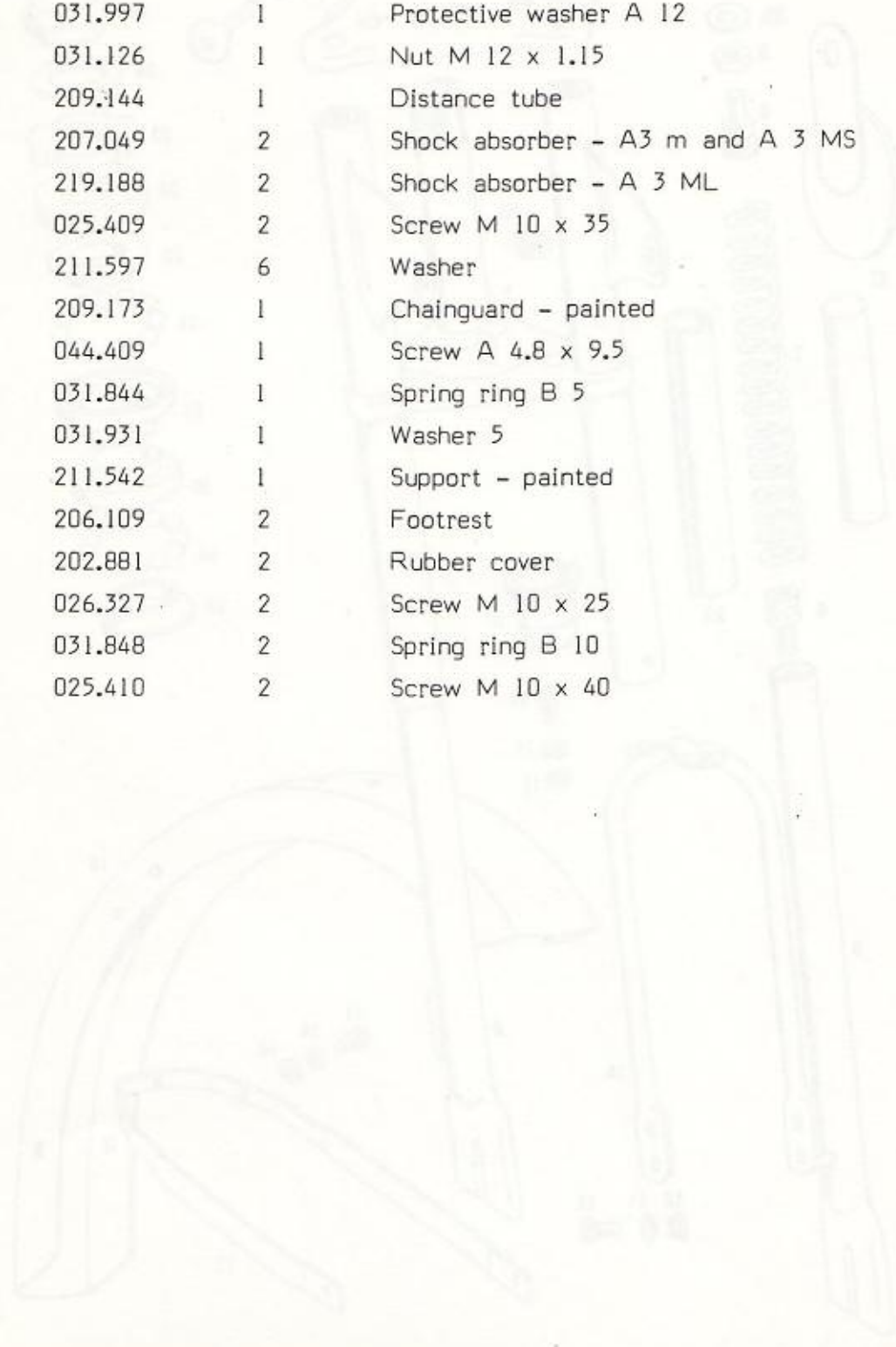
TOMOS

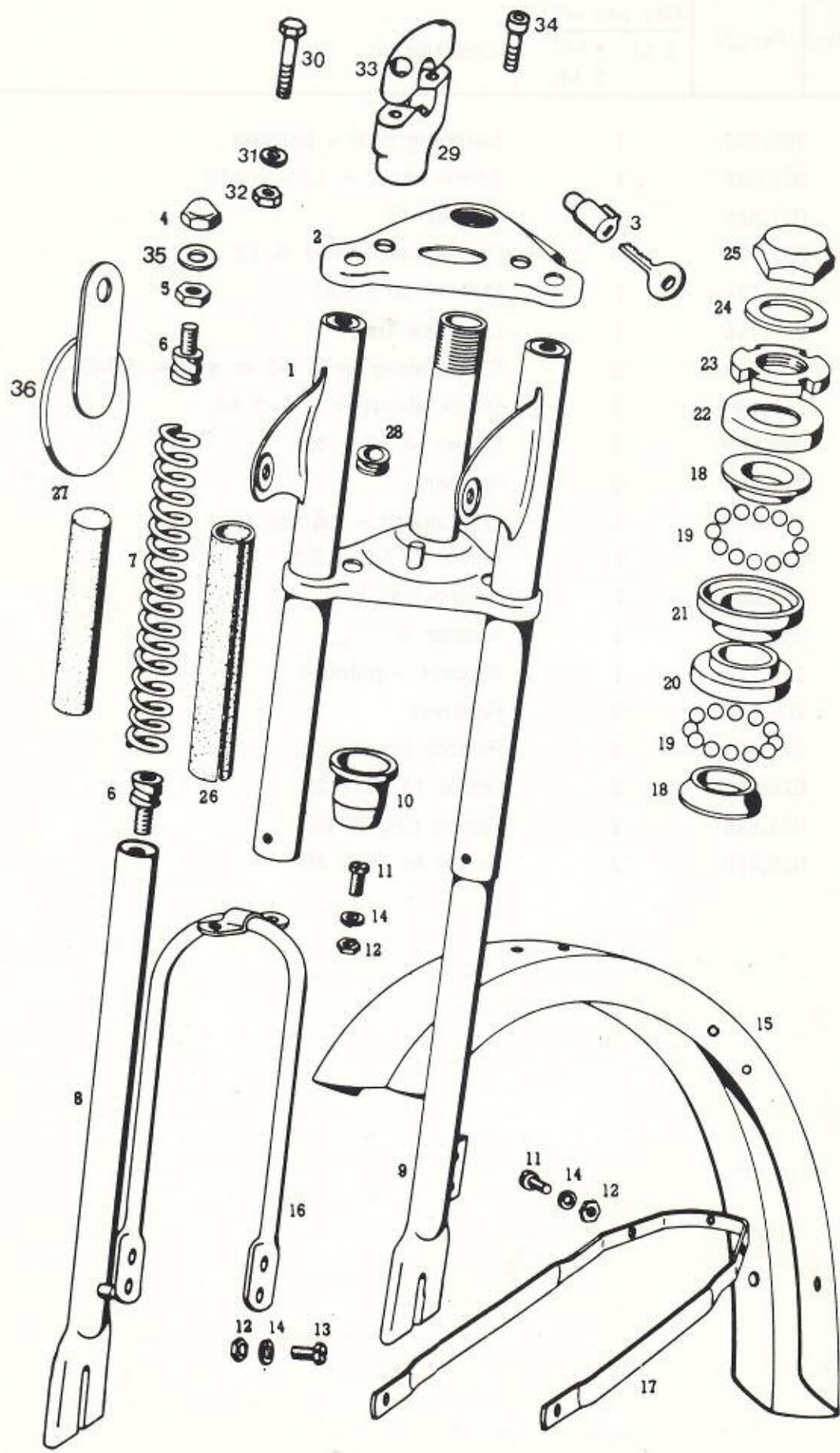
SWINGING ARM, SCHOCK ABSORBER, SUPPORT

A3M, MS, ML

Section 9

Ref.No.	Part.N	Qty per unit		Description
		3 M	3 MS 3 ML	
1	209.150	1		Swinging arm - painted
2	026.083	1		Screw M 12 x 1.25 x 120
3	031.935	1		Washer 12
4	031.997	1		Protective washer A 12
5	031.126	1		Nut M 12 x 1.15
6	209.144	1		Distance tube
7	207.049	2		Shock absorber - A3 m and A 3 MS
7	219.188	2		Shock absorber - A 3 ML
8	025.409	2		Screw M 10 x 35
9	211.597	6		Washer
10	209.173	1		Chainguard - painted
11	044.409	1		Screw A 4.8 x 9.5
12	031.844	1		Spring ring B 5
13	031.931	1		Washer 5
14	211.542	1		Support - painted
15	206.109	2		Footrest
16	202.881	2		Rubber cover
17	026.327	2		Screw M 10 x 25
18	031.848	2		Spring ring B 10
19	025.410	2		Screw M 10 x 40





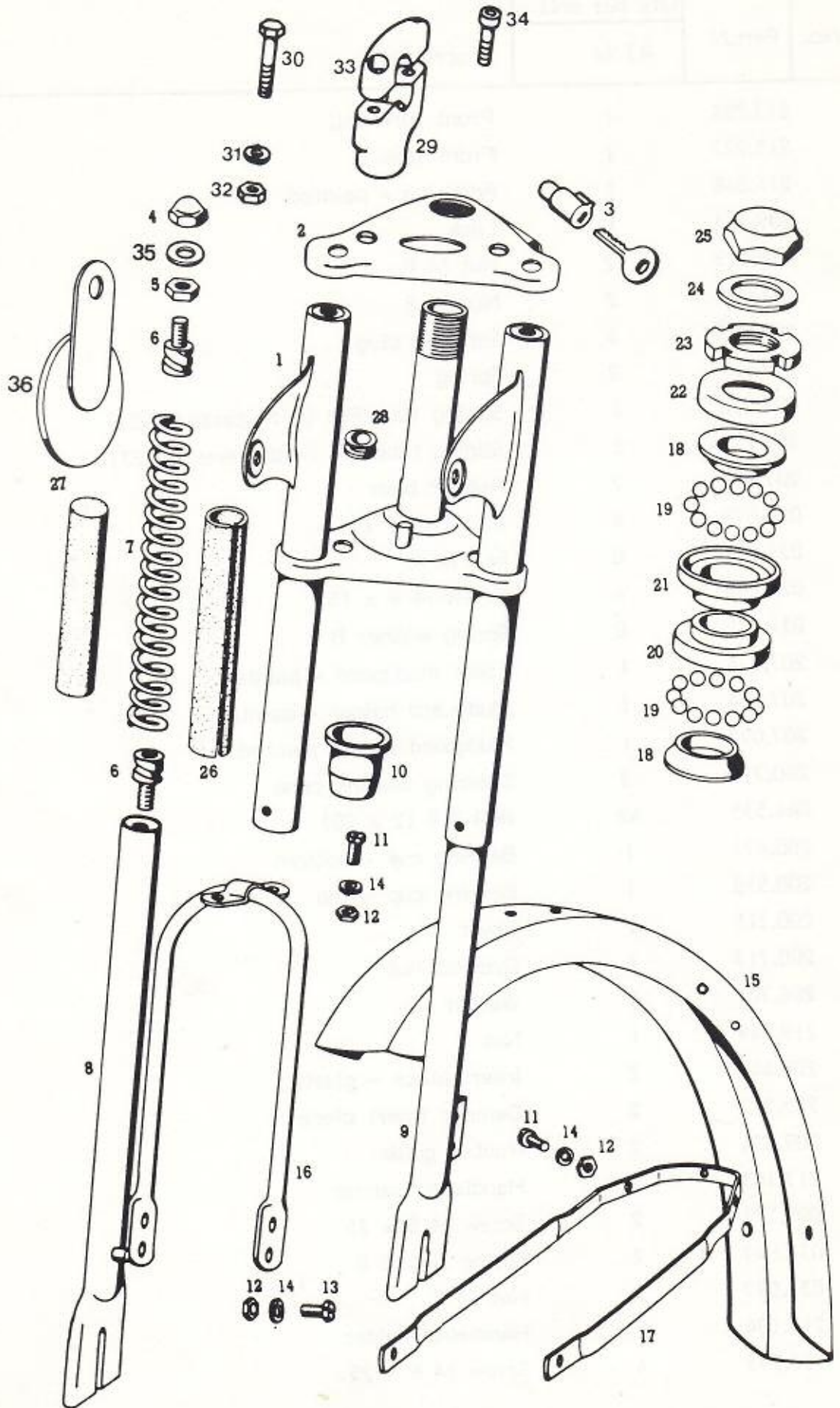
TOMOS

FRONT FORK, FRONT MUDGUARD

A3 M

Section 10

Ref.No.	Part.N	Qty per unit		Description
		A3 M		
-	213.226	1		Front fork cpl.
1	213.227	1		Front fork
2	214.848	1		Fork lug - painted
3	209.783	1		Lock
4	030.019	2		Nut M 8
5	031.225	2		Nut M 8
6	207.983	4		Screwed plug
7	207.984	2		Spring
8	209.228	1		Sliding tube RH (with parts 6,7,27)
9	209.229	1		Sliding tube LH (with parts 6,7,27)
10	207.973	2		Rubber bush
11	027.078	4		Screw M 6 x 12
12	031.075	8		Nut M 6
13	026.288	4		Screw M 6 x 15
14	031.845	8		Spring washer B 6
15	207.074	1		Front mudguard - painted
16	207.164	1		Mudguard holder - painted
17	207.077	1		Mudguard stay - painted
18	200.714	2		Steering bearing cone
19	044.535	42		Ball \emptyset 5 (2 x 20)
20	200.471	1		Bearing cup - bottom
21	200.558	1		Bearing cup - top
22	200.715	1		Cover
23	200.717	1		Grooved nut
24	206.701	1		Washer
25	219.349	1		Nut
26	208.446	2		Insert piece - plastics
27	209.227	2		Damper insert piece
28	209.894	2		Rubber guide
29	217.103	2		Handlebar carrier
30	025.231	2		Screw M 8 x 25
31	031.847	2		Spring ring B 8
32	031.077	2		Nut M 8
33	217.104	2		Handlebar holder
34	026.573	4		Screw M 6 x 25




TOMOS

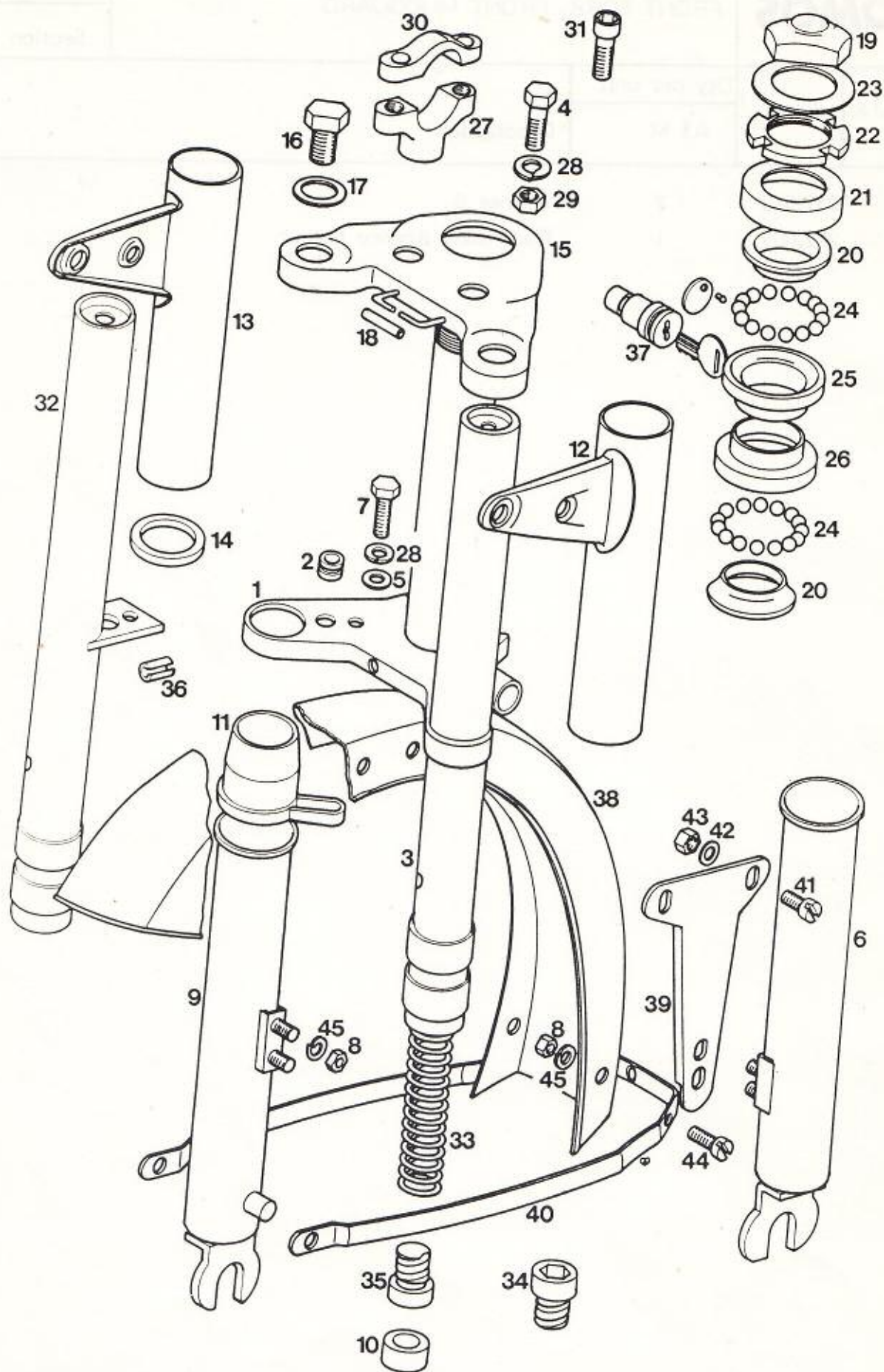
FRONT FORK, FRONT MUDGUARD

A3 M

Section 10

Ref.No.	Part.N	Qty per unit		Description
		A3 M		
35	031.510	2		Washer 8
36	222.009	1		Road fund licence holder

A faint technical drawing of a front fork and mudguard assembly is visible in the background of the table. The drawing shows various components like the fork tubes, mudguard, and associated hardware.



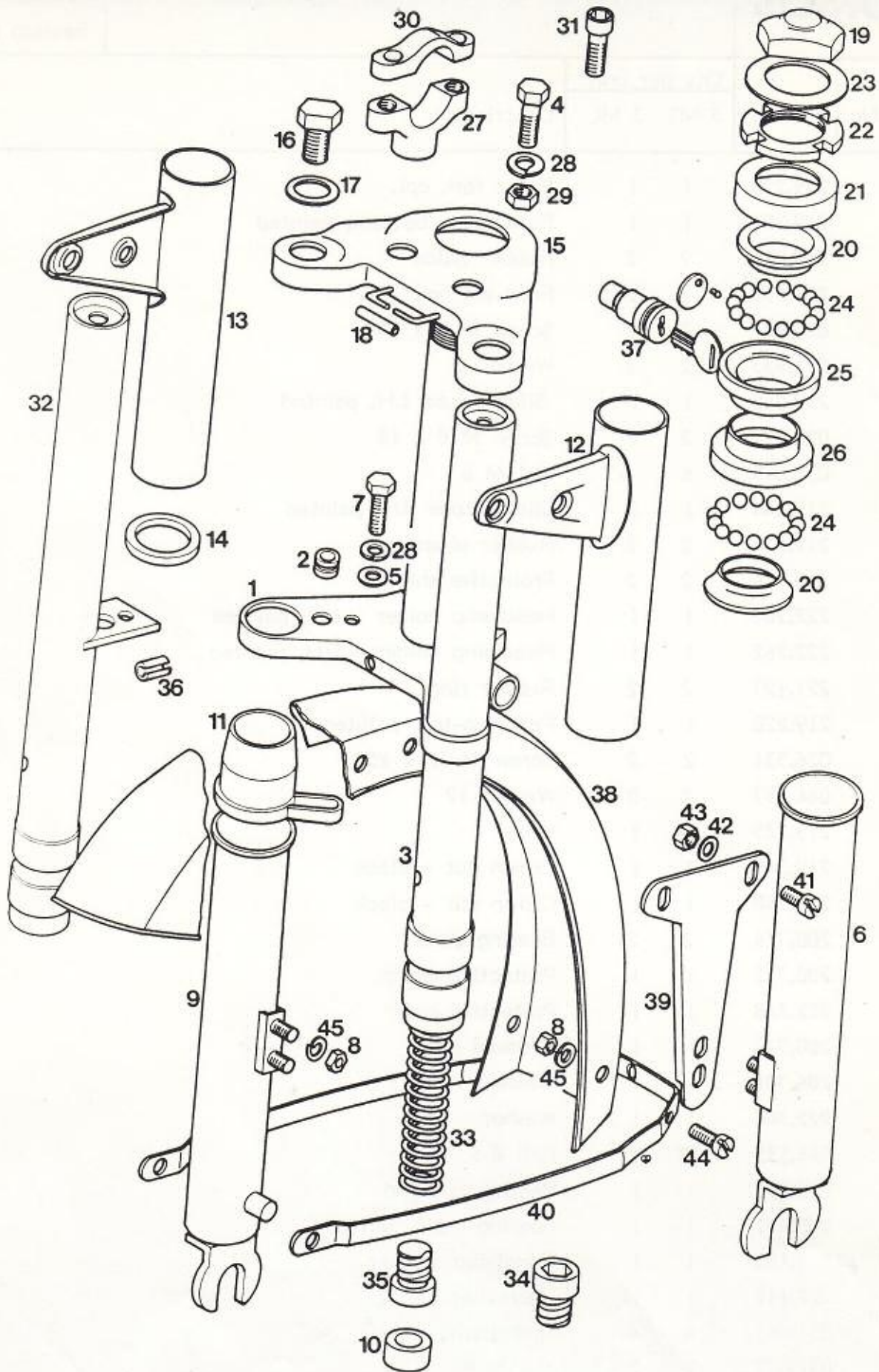
TOMOS

FRONT FORK

A3 MS A3 ML

Section II

Ref.No.	Part.N	Qty per unit		Description
		3 MS	3 ML	
-	219.250	1	1	Front fork cpl.
1	219.251	1	1	Fork lug - bottom, painted
2	219.211	2	2	Rubber guide
3	219.255	2	2	Fork leg cpl.
4	025.231	2	2	Screw M 8 x 25
5	031.933	2	2	Washer 8
6	219.242	1	1	Sliding tube LH, painted
7	025.222	2	2	Screw M 8 x 18
8	031.075	6	6	Nut M 6
9	219.244	1	1	Sliding tube RH, painted
10	219.227	2	2	Rubber absorber
11	219.226	2	2	Protective shield
12	222.261	1	1	Headlamp holder - LH, painted
13	222.262	1	1	Headlamp holder - RH, painted
14	221.127	2	2	Rubber ring
15	219.228	1	1	Fork lug-top, painted
16	026.331	2	2	Screw M 12 x 25
17	044.157	2	2	Washer 12
18	219.235	1	1	Hose
19	219.349	1	1	Crown nut - black
19	222.348	1	1	Crown nut - black
20	200.714	2	2	Bearing cone
21	200.715	1	1	Protective cover
21	222.368	1	1	Protective cover
22	200.717	1	1	Grooved nut
23	206.701	1	1	Washer
23	222.349	1	1	Washer
24	044.535	42	42	Ball Ø 5
25	200.558	1	1	Bearing cup-top
26	200.471	1	1	Bearing cup - bottom
27	217.103	1	1	Handlebar carrier
27	222.115	1	1	Handlebar carrier
28	031.847	4	4	Spring ring B 8
29	031.077	2	2	Nut M 8
30	217.104	2	2	Handlebar holder



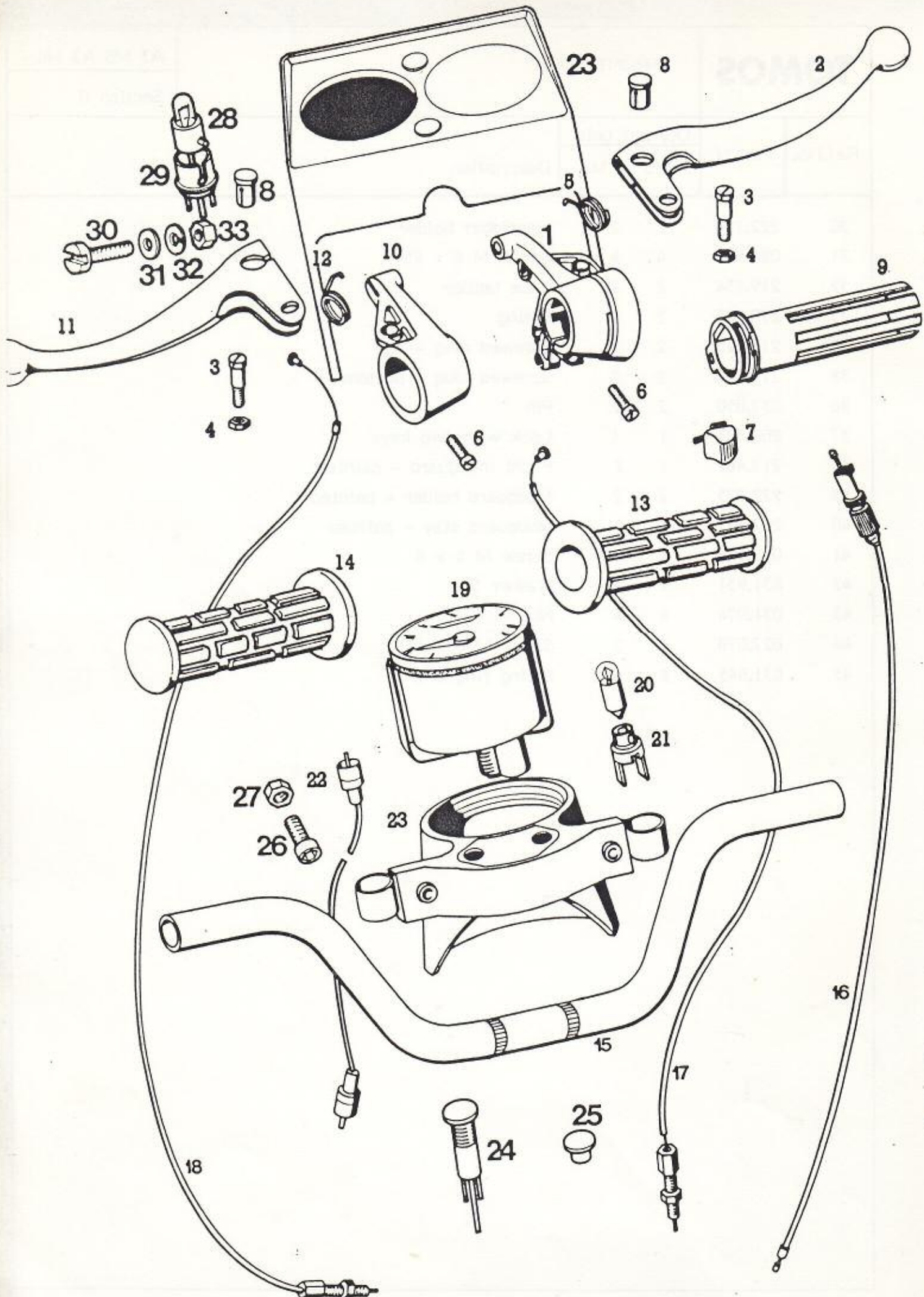
TOMOS

FRONT FORK

A3 MS A3 ML

Section II

Ref.No.	Part.N	Qty per unit		Description
		3 MS	3 ML	
30	222.116	2	2	Handlebar holder
31	026.573	4	4	Screw M 6 x 25
32	219.254	2	2	Tube holder
33	219.225	2	2	Spring
34	219.223	2	2	Screwed plug - top
35	219.224	2	2	Screwed plug - bottom
36	037.050	2	2	Pin
37	209.783	1	1	Lock with two keys
38	217.461	1	1	Front mudguard - painted
39	222.275	2	2	Mudguard holder - painted
40	207.077	1	1	Mudguard stay - painted
41	027.063	4	4	Screw M 5 x 8
42	031.931	4	4	Washer 5
43	031.074	4	4	Nut M 5
44	027.078	2	2	Screw M 6 x 12
45	031.845	6	6	Spring ring B 6

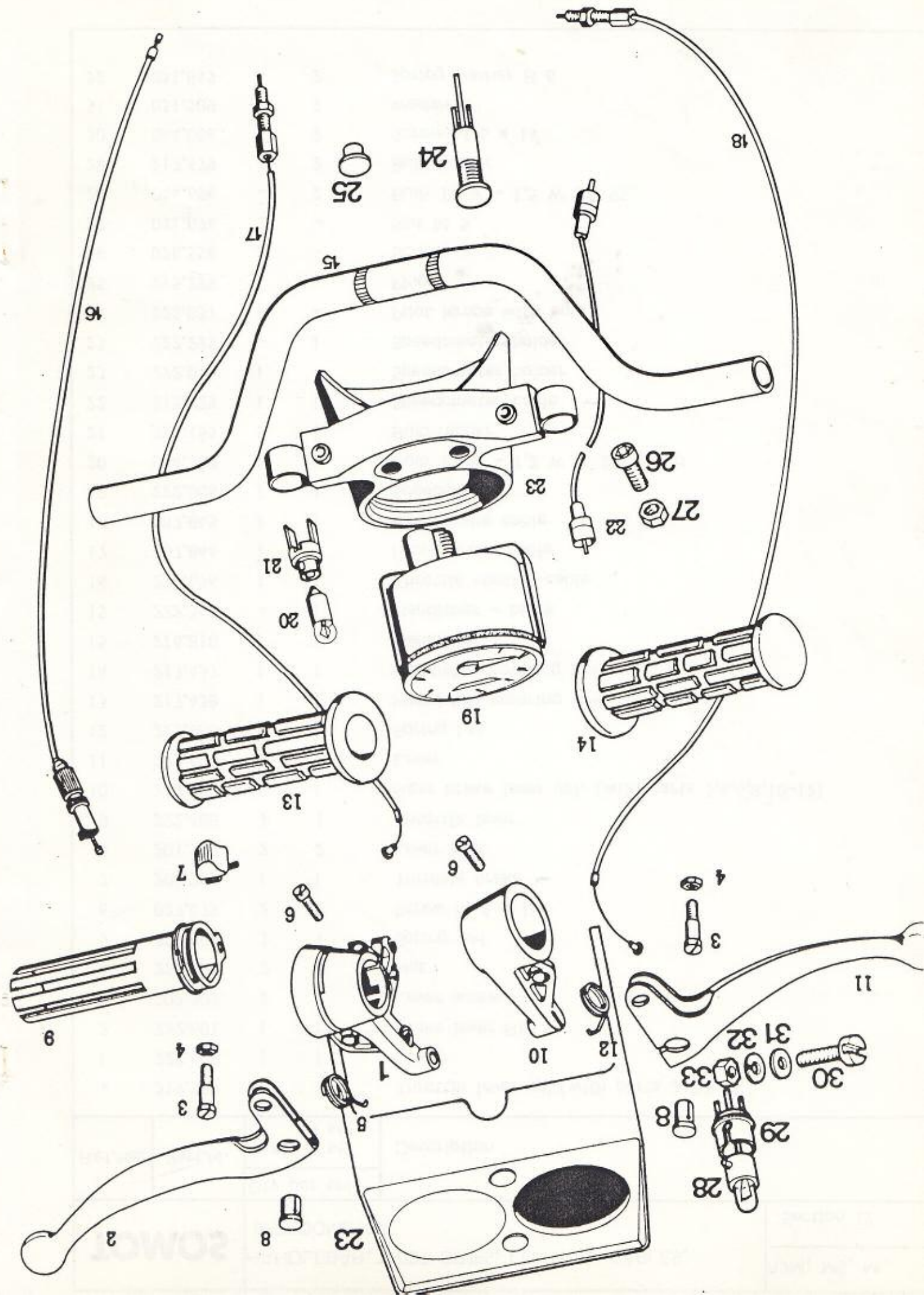


TOMOSHANDLEBAR, TWIST GRIPS, CONTROL CABLES,
SPEEDOMETER

A3M, MS, ML

Section 12

Ref.No.	Part.N	Qty per unit		Description
		3 M	3 MS 3 ML	
-	219.920	1	1	Throttle lever cpl.(with parts 2-8,9,13)
1	222.602	1	1	Clamp
2	222.601	1	1	Brake lever RH
3	202.303	2	2	Lever screw
4	222.607	2	2	Nut
5	222.606	1	1	Spring RH
6	027.079	2	2	Screw M 6 x 15
7	206.790	1	1	Throttle brake
8	201.197	2	2	Lever bolt
9	222.608	1	1	Throttle lever
10	219.922	1	1	Rear brake lever cpl. (with parts 3,4,6,8,10-12)
11	222.600	1	1	Lever
12	222.605	1	1	Spring LH
13	217.438	1	1	Handlebar covering RH
14	217.437	1	1	Handlebar covering LH
15	214.810	1	1	Handlebar
15	222.347	-	1	Handlebar - black
16	213.696	1	1	Throttle control cable
17	207.844	1	1	Front brake cable
18	207.845	1	1	Rear brake cable
19	222.006	1	1	Speedometer
20	044.702	1	1	Bulb 12 V - 1,2 W W 2 x 4.6 d
21	217.155	1	1	Bulb holder
22	213.729	1	1	Speedometer cable
23	222.019	1	-	Speedometer holder
23	222.295	-	1	Speedometer holder
24	222.031	1	-	Pilot lampe with bulb
25	215.299	1	-	Plug
26	026.554	2	-	Screw
27	031.074	2	-	Nut M 5
28	044.696	-	2	Bulb 12 V - 1,5 W BA 95
29	217.679	-	2	Bulb holder
30	044.086	-	2	Screw M 6 x 14
31	031.509	-	2	Washer 6
32	031.845	-	2	Spring washer B 6

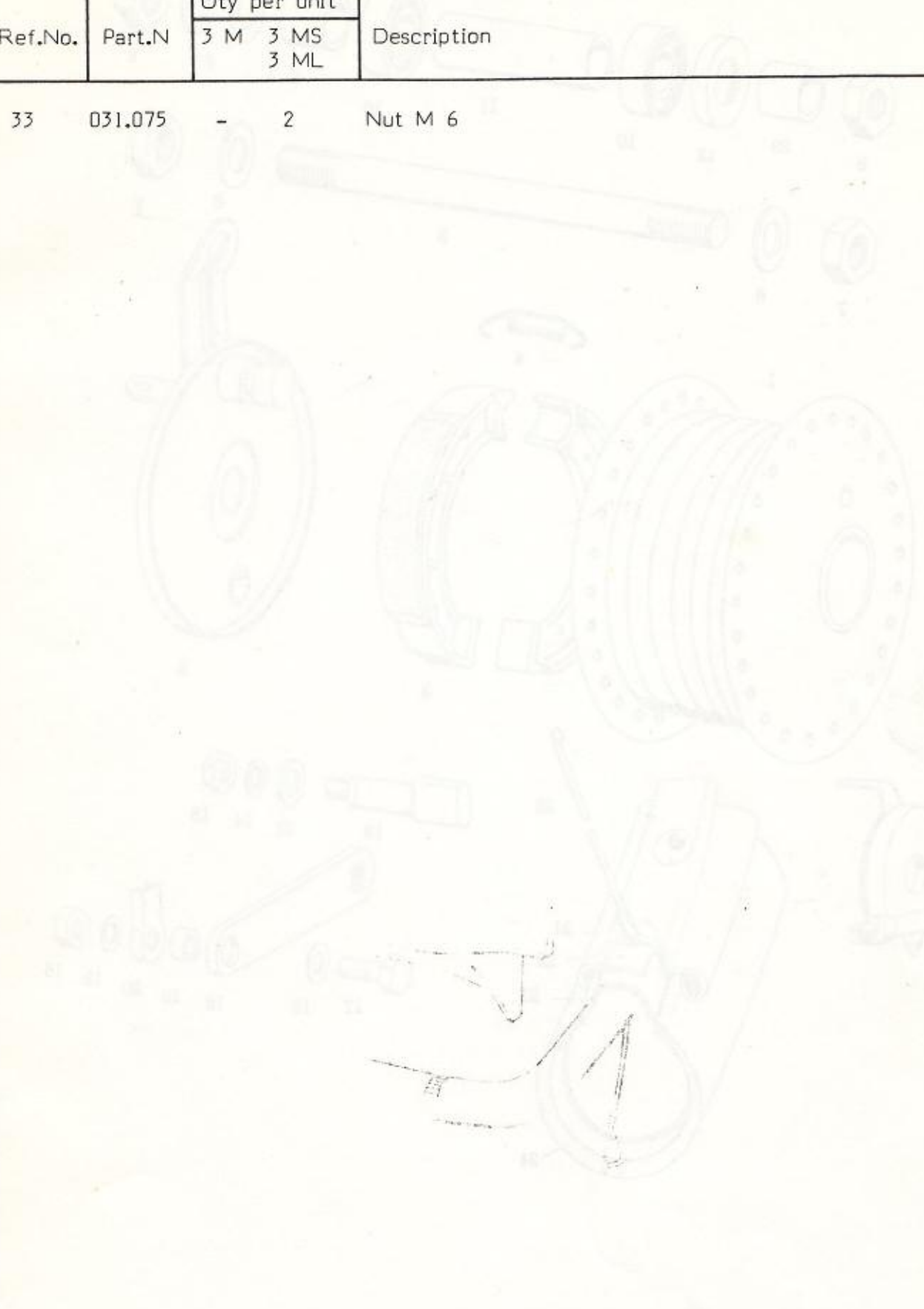


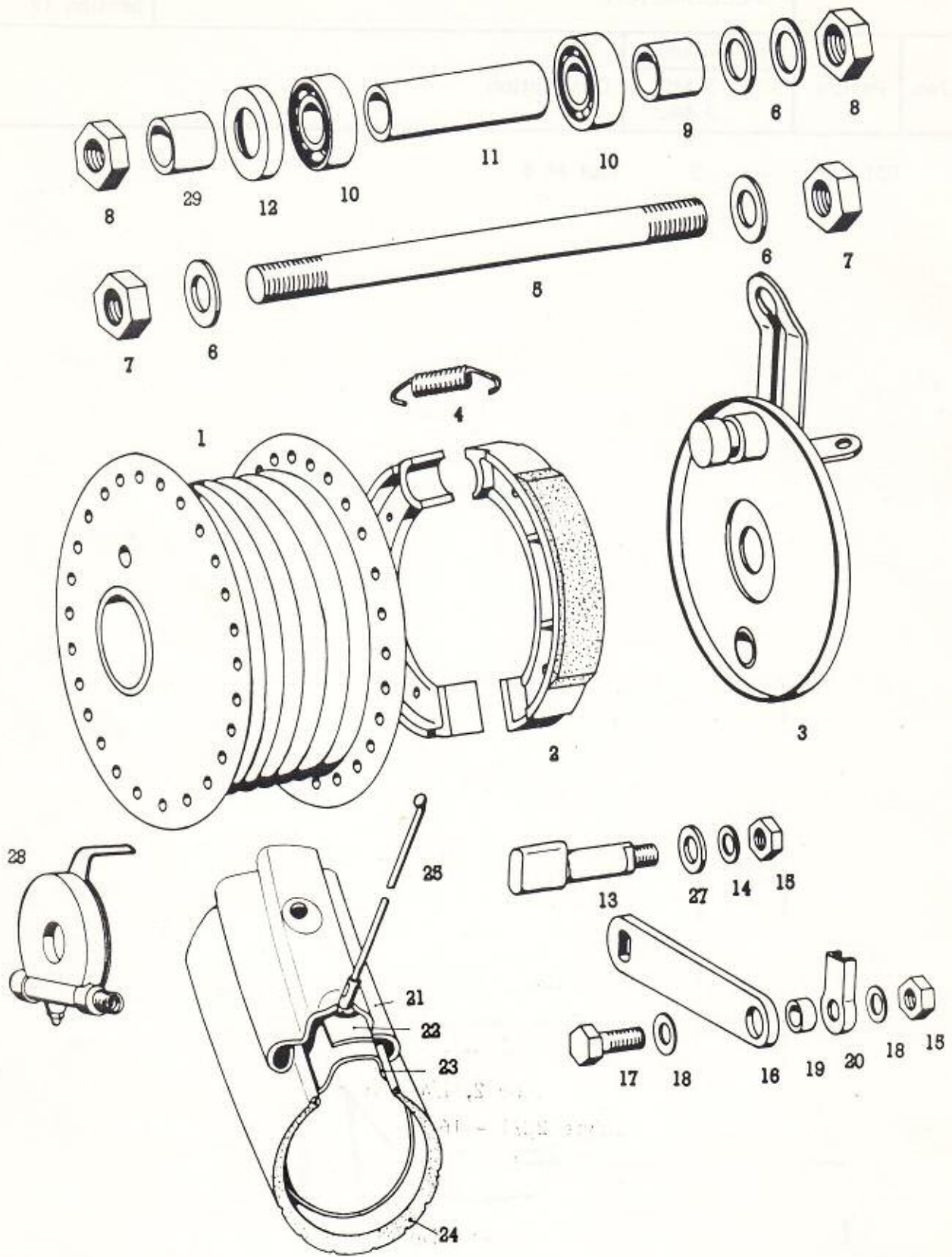
TOMOSHANDLEBAR, TWIST GRIPS, CONTROL CABLES,
SPEEDOMETER

A3M, MS, ML

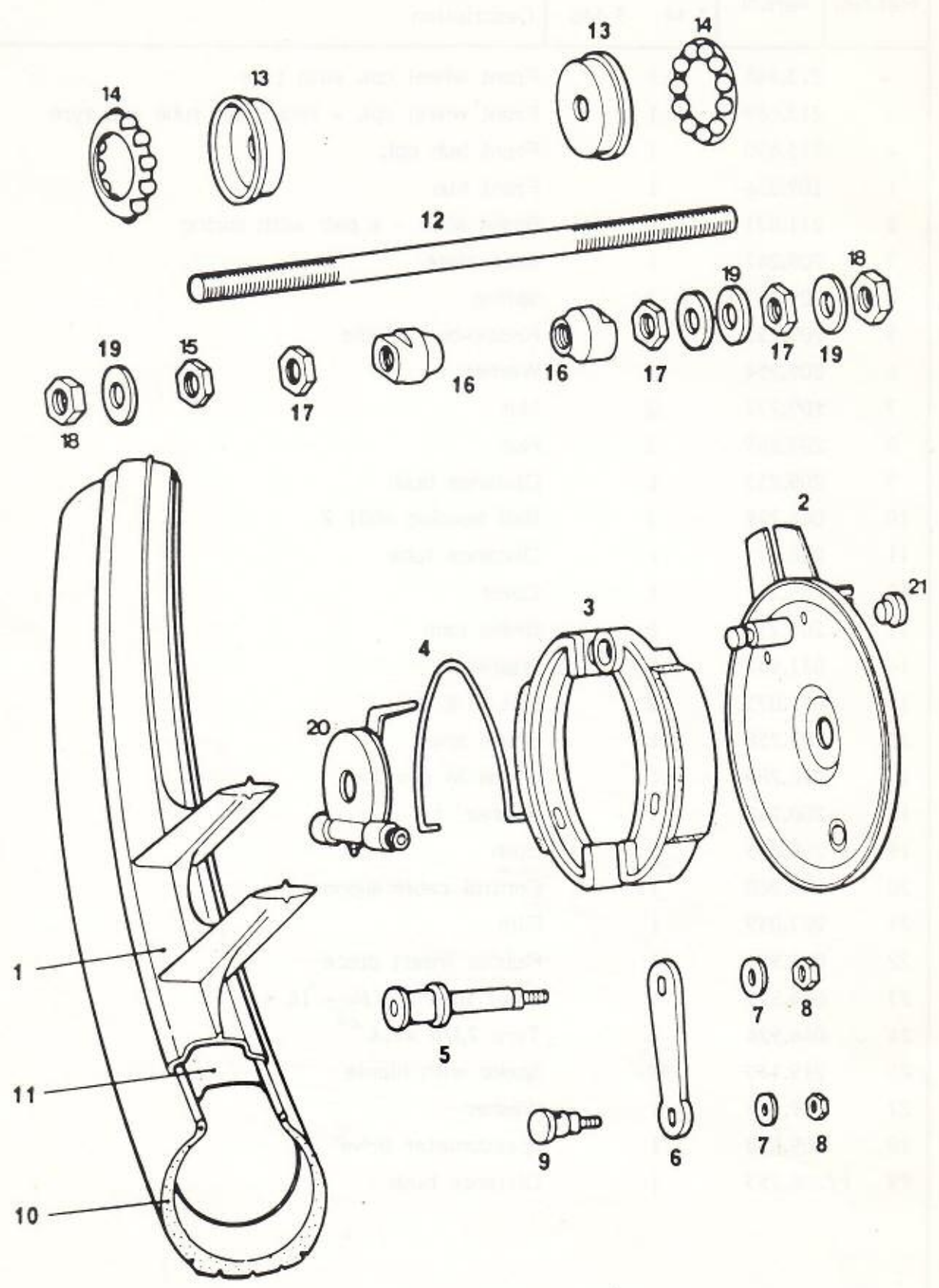
Section 12

Ref.No.	Part.N	Qty per unit		Description
		3 M	3 MS 3 ML	
33	031.075	-	2	Nut M 6





TOMOS		FRONT WHEEL		A3 M, A3 MS
				Section 13
Ref.No.	Part.N	Qty per unit		Description
		3 M	3 MS	
-	213.465	1		Front wheel cpl. with tyre
-	213.469	1		Front wheel cpl. - less inner tube and tyre
-	213.490	1		Front hub cpl.
1	209.856	1		Front hub
2	211.071	1		Brake shoe - a pair with spring
3	209.242	1		Base plate
4	209.257	2		Spring
5	209.255	1		Knock-out spindle
6	209.254	4		Washer
7	209.277	2		Nut
8	209.249	2		Nut
9	209.253	1		Distance bush
10	044.228	2		Ball bearing 6001 Z
11	206.871	1		Distance tube
12	209.272	1		Cover
13	209.238	1		Brake cam
14	031.932	1		Washer 6
15	031.075	2		Nut M 6
16	209.258	1		Brake lever
17	026.288	1		Screw M 6 x 15
18	200.248	2		Washer
19	209.275	1		Bush
20	209.260	1		Control cable support
21	207.059	1		Rim
22	044.926	1		Rubber insert piece
23	044.925	1		Inner tube 2, 1/4 - 16
24	044.924	1		Tyre 2,1/4 - 16
25	219.135	36		Spoke with nipple
27	209.239	1		Washer
28	209.650	1		Speedometer drive
29	208.253	1		Distance bush



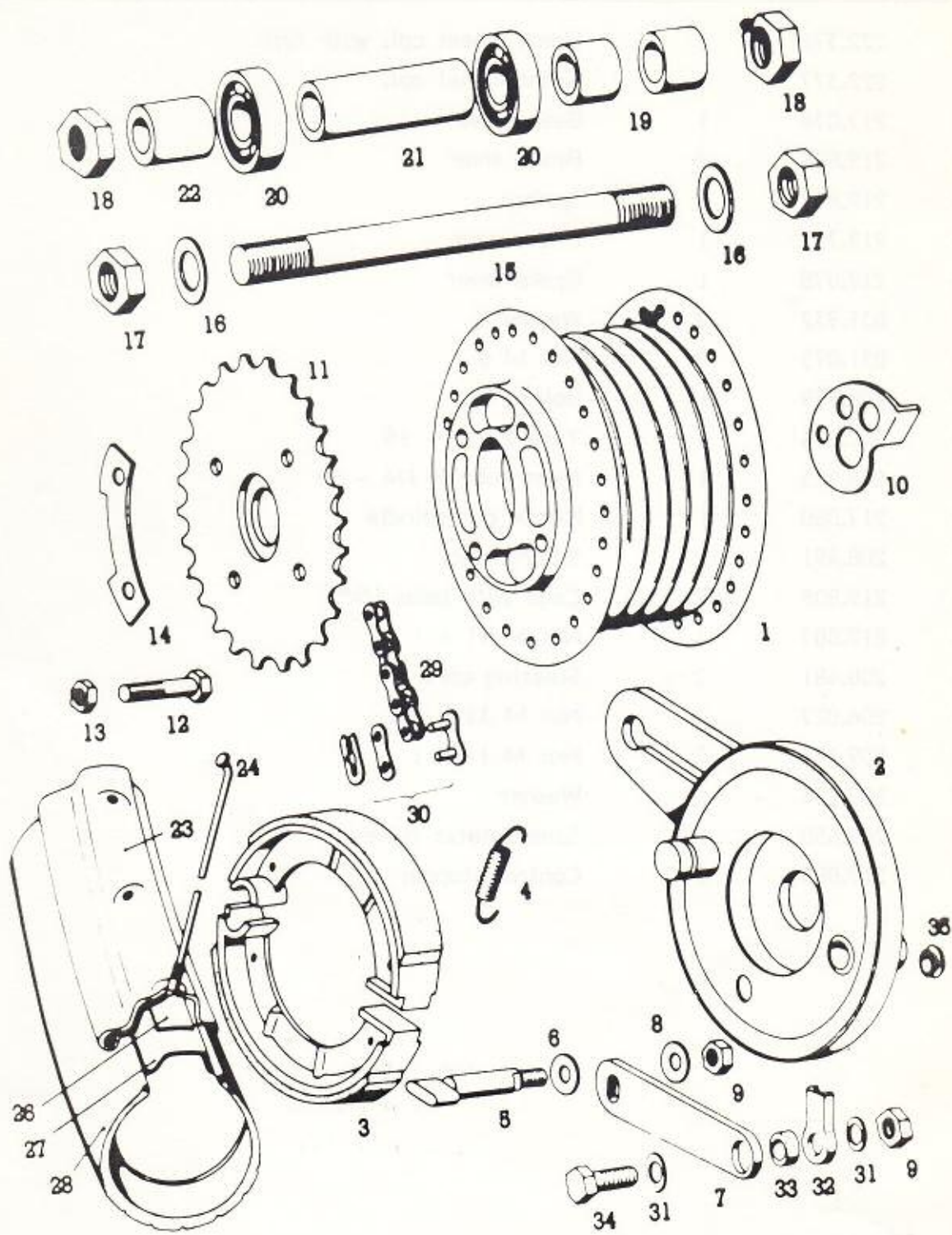
TOMOS

FRONT WHEEL - MAGNUM

A3 ML

Section 14

Ref.No.	Part.N	Qty per unit		Description
		A3 ML		
-	222.376	1		Front wheel cpl. with tyre
1	222.377	1		Front wheel cpl.
2	217.074	1		Base plate
3	219.806	2		Brake shoe
4	219.807	2		Spring
5	219.791	1		Brake cam
6	217.078	1		Brake lever
7	031.932	2		Washer 6
8	031.075	2		Nut M 6
9	208.499	1		Bolt
10	044.924	1		Tyre 2 1/4 - 16
11	044.925	1		Inner tube 2 1/4 - 16
12	217.080	1		Knock out spindle
13	208.491	2		Sliding ring
14	219.809	2		Cage with balls 1/4"
15	217.087	1		Nut M 11 x 1
16	208.481	2		Steering cone
17	206.827	3		Nut M 11 x 1
18	209.277	2		Nut M 11 x 1
19	209.254	4		Washer
20	209.650	1		Speedometer drive
21	217.085	2		Control stopper



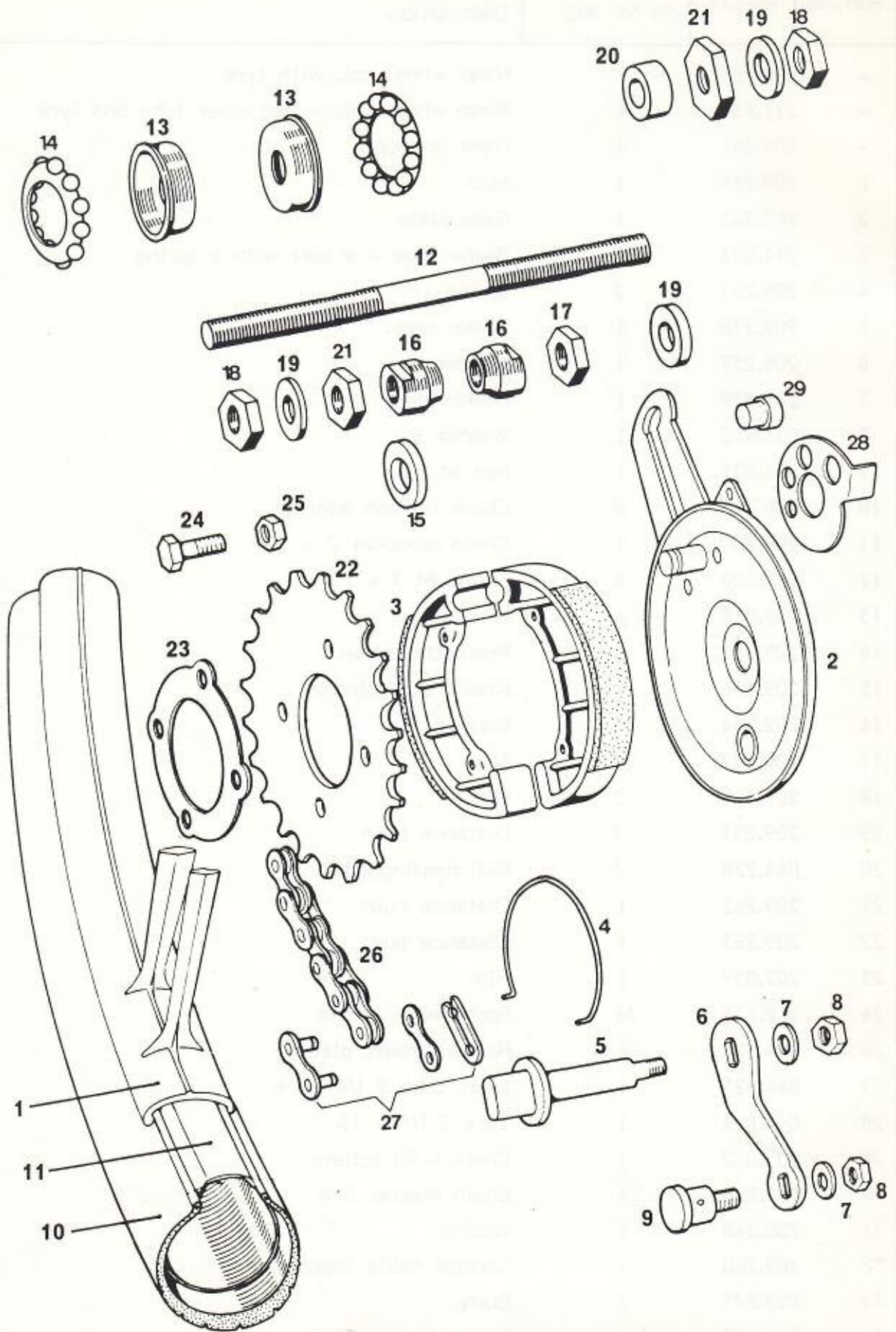
TOMOS

REAR WHEEL

A3 M, A3 MS

Section 15

Ref.No.	Part.N	Qty per unit		Description
		A3 M	MS	
-	209.287	1		Rear wheel cpl. with tyre
-	211.631	1		Rear wheel cpl. - less inner tube and tyre
-	209.241	1		Rear hub cpl.
1	209.245	1		Hub
2	209.243	1		Base plate
3	211.071	1		Brake shoe - a pair with a spring
4	209.257	2		Spring
5	209.238	1		Brake cam
6	209.239	1		Washer
7	209.258	1		Brake lever
8	031.932	1		Washer 6
9	031.075	1		Nut M 6
10	209.212	2		Chain tension adjuster
11	209.261	1		Chain sprocket Z = 22
12	025.208	4		Screw M 7 x 22
13	031.076	4		Nut M 7
14	205.742	2		Protective sheet
15	209.256	1		Knock out spindle
16	209.254	2		Washer
17	209.277	2		Nut
18	209.249	2		Nut
19	209.253	2		Distance bush
20	044.228	2		Ball bearing 6001 Z
21	209.262	1		Distance bush
22	209.263	1		Distance bush
23	207.059	1		Rim
24	219.135	36		Spoke with nipple
26	044.926	1		Rubber insert piece
27	044.925	1		Inner tube 2 1/4 - 16
28	044.924	1		Tyre 2 1/4 - 16
29	207.012	1		Chain - 90 rollers
30	202.268	1		Chain master link
31	200.248	1		Washer
32	209.260	1		Control cable support
33	209.275	1		Bush
34	026.288	1		Screw M 6 x 15



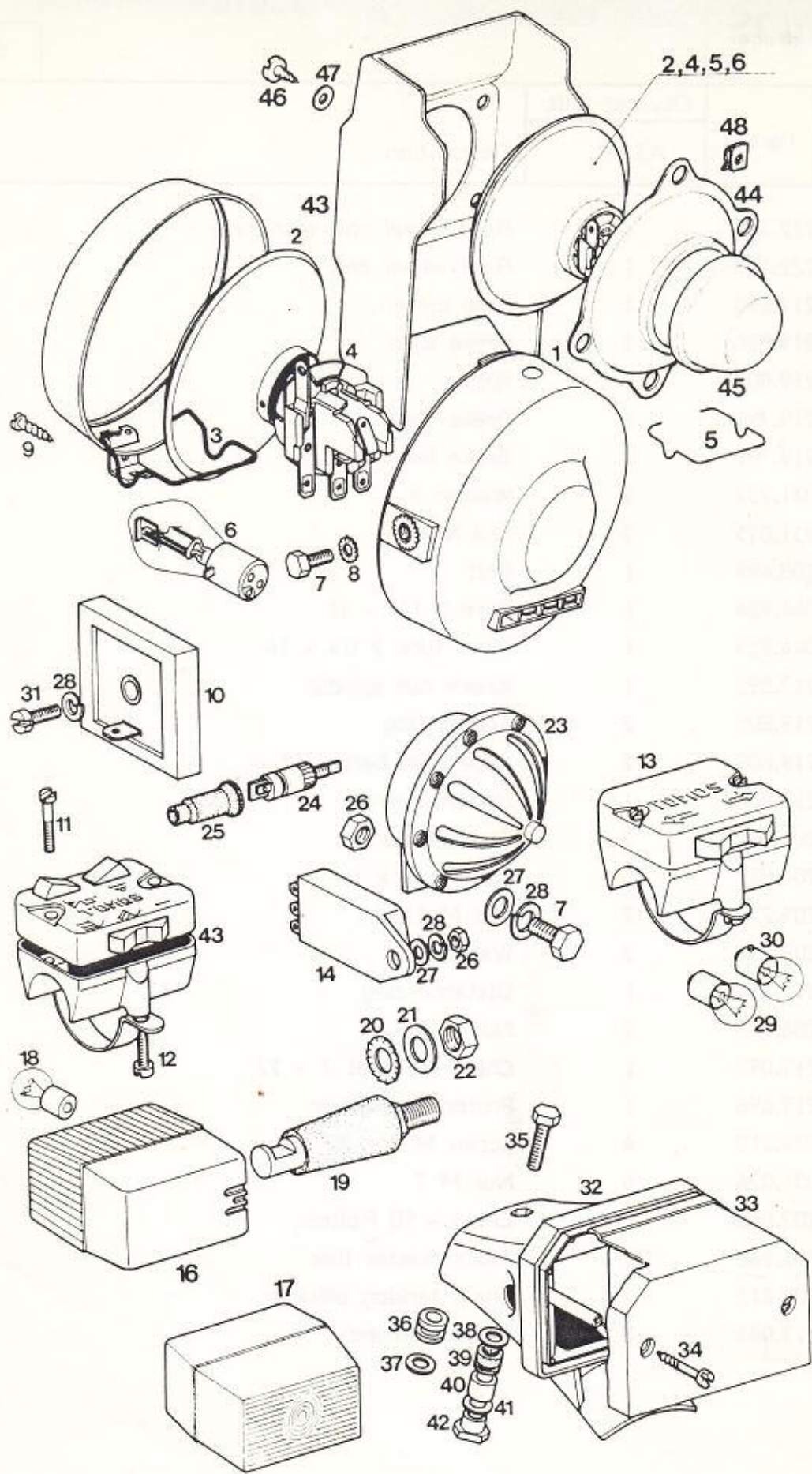
TOMOS

REAR WHEEL - MAGNUM

A3 ML

Section 16

Ref.No.	Part.N	Qty per unit		Description
		A3 ML		
-	222.378	1		Rear wheel cpl. with tyre
1	222.379	1		Rear wheel cpl.
2	217.090	1		Base plate
3	219.806	2		Brake shoe
4	219.807	1		Spring
5	219.791	1		Brake cam
6	219.799	1		Brake lever
7	031.932	2		Washer 6
8	031.075	2		Nut M 6
9	208.499	1		Bolt
10	044.924	1		Tyre 2 1/4 - 16
11	044.925	1		Inner tube 2 1/4 - 16
12	217.092	1		Knock out spindle
13	219.808	2		Sliding ring
14	219.809	2		Cage with balls 1/4"
15	217.086	1		Distance ring
16	208.481	2		Steering cone
17	206.827	1		Nut M 11 x 1
18	209.277	2		Nut M 11 x 1
19	209.254	3		Washer
20	217.794	1		Distance ring
21	206.845	2		Nut
22	217.095	1		Chain sprocket Z = 22
23	217.096	1		Protective washer
24	025.210	4		Screw M 7 x 30
25	031.076	4		Nut M 7
26	207.012	1		Chain - 90 Rollers
27	202.268	1		Chain master link
28	209.212	2		Chain tension adjuster
29	217.085	2		Control stopper



TOMOS

ELECTRICAL EQUIPMENT

A3 M, MS, ML

Section 17

Ref.No.	Part.N	Qty per unit		Description
		3 M	3 MS 3 ML	
1	222.005	1	-	Headlamp cpl.
2	222.022	1	1	Lighting assy.
3	222.023	6	-	Retaining spring
4	222.024	1	1	Lamp holder
5	222.029	1	1	Retaining spring
6	044.701	1	1	Bulb 12 V 25/25 W BA 20 d .
7	026.288	3	1	Screw M 6 x 16
8	044.378	2	-	Washer B 6
9	027.066	1	-	Screw M 5 x 16
10	221.582	1	1	Voltage regulator
11	027.108	2	4	Screw M 3 x 26
12	044.413	2	4	Screw A 3,5 x 16
13	219.978	-	1	Trafficator switch
14	221.606	-	1	Relay
16	222.649	-	2	Trafficator, front
17	222.650	-	2	Trafficator rear
18	044.689	-	4	Bulb 12 V 10 W BA 15 S
19	219.551	-	4	Trafficator carrier
20	031.977	-	4	Washer A 12
21	209.254	-	4	Washer
22	209.249	-	4	Nut
23	221.440	1	1	Horn
24	222.002	2	2	Stop switch
25	213.194	2	2	Protective sleeve
26	031.075	1	2	Nut M 6
27	031.932	1	2	Washer 6
28	031.845	2	3	Spring ring B 6
29	044.698	1	1	Bulb 12 V 5 W
30	044.697	1	1	Bulb 12 V 15 W
31	027.082	1	1	Screw M 6 x 25
32	219.529	1	-	Tail light holder
32	219.943	-	1	Tail light holder
33	219.542	1	1	Tail light

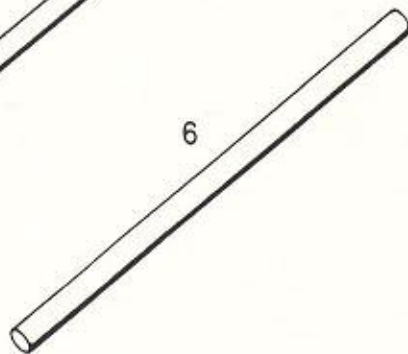
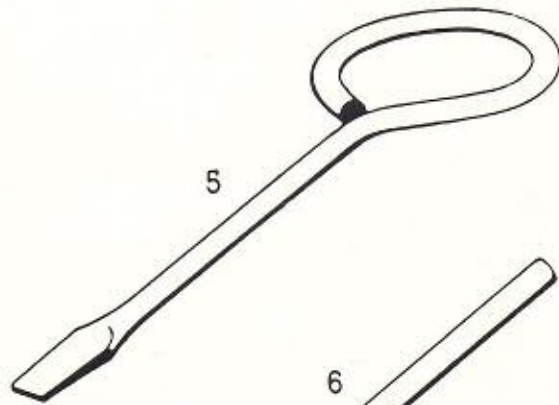
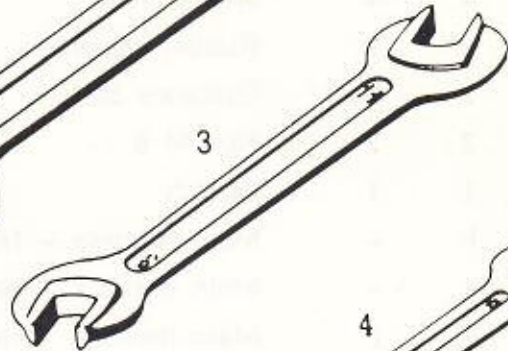
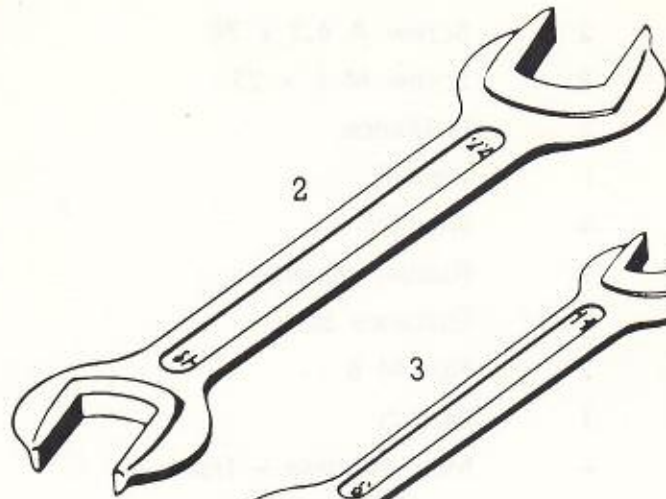
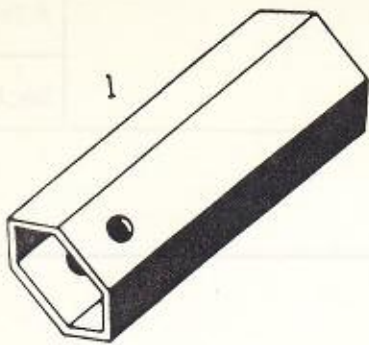
TOMOS

ELECTRICAL EQUIPMENT

A3M, MS, ML

Section 17

Ref.No.	Part.N	Qty per unit		Description
		3M	3 MS 3 ML	
34	044.416	2	2	Screw A 4,2 x 38
35	025.193	2	2	Screw M 6 x 25
36	209.894	2	2	Guidance
37	031.509	1	1	Washer
38	208.324	4	4	Washer
39	219.946	2	2	Rubber absorber
40	222.187	2	2	Distance bush
41	031.075	2	2	Nut M 6
42	219.048	1	1	Switch
-	222.483	1	-	Main harness - front
-	219.106	1	-	Main harness - rear
-	222.488	-	1	Main harness - front
-	222.185	-	1	Main harness - rear
43	222.290	-	1	Streamer - front
44	222.293	-	1	Cover
45	222.294	-	1	Cap
46	044.418	-	4	Sheet screw A 4,2 x 13
47	031.930	-	4	Washer 4
48	044.441	-	4	Sheet nut 4,2



TOMOS		TOOLS		A3M, MS, ML
				Section 18
Ref.No.	Part.N	Qty per unit		Description
		3 M	3 MS 3 ML	
-	205.892	1		Tools cpl.
1	200.846	1		Box spanner
2	044.542	1		Spanner 19 - 22
3	044.538	1		Spanner 9 - 11
4	044.537	1		Spanner 8 - 10
5	200.847	1		Screw driver
6	200.849	1		Lever

	AMOUNT	
--	--------	--

1	100.00	INITIAL
2	200.00	INITIAL
3	300.00	INITIAL
4	400.00	INITIAL
5	500.00	INITIAL
6	600.00	INITIAL
7	700.00	INITIAL
8	800.00	INITIAL
9	900.00	INITIAL
10	1000.00	INITIAL

This page contains a large amount of faint, illegible text, likely bleed-through from the reverse side of the document. The text is too light to transcribe accurately.

