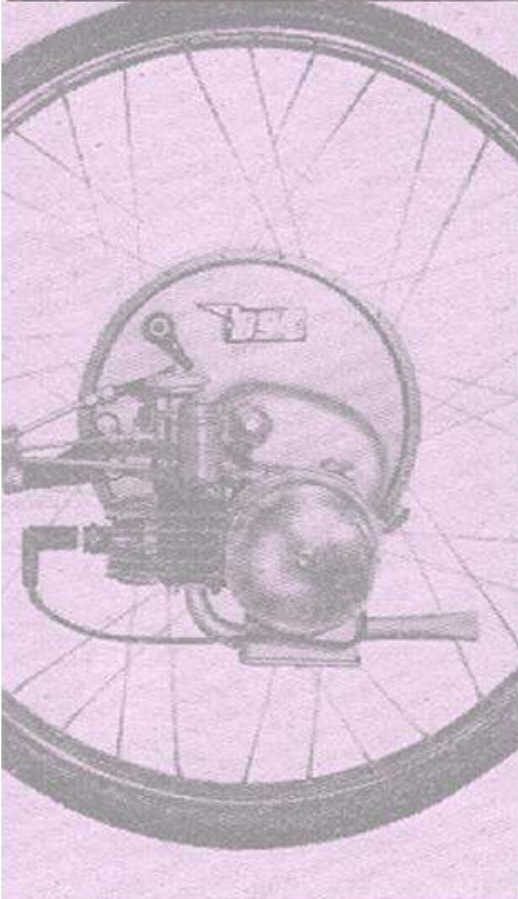


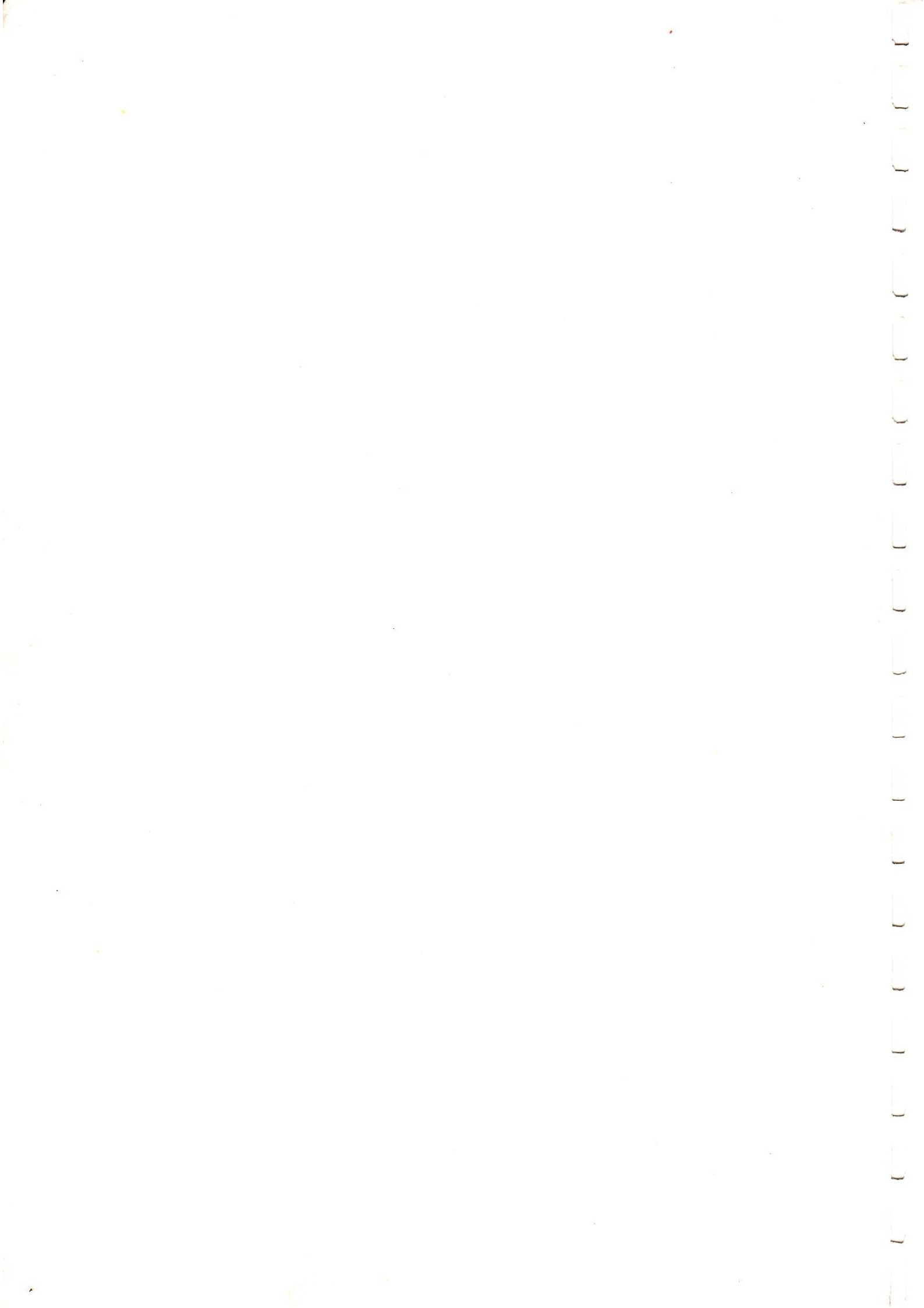
IceniCAM Information Service



SPARE PARTS LIST

MODEL ER2
TWO SPEED AUTOMATIC

Easy-Rider
Easy-Rider
Easy-Rider
Easy-Rider



Illustrated Parts List
For

Easy-Rider

Commencing Engine No.2935 - Frame No. ER2BD 2935

© N.V.T. Motorcycles Ltd. 1976.

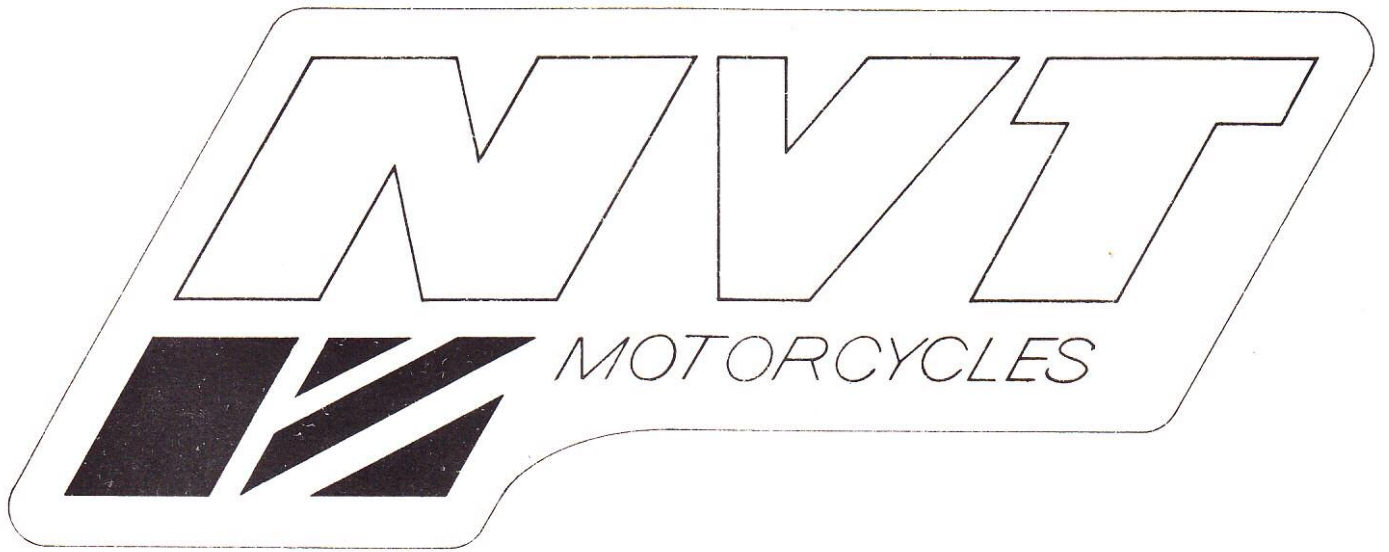
N.V.T. Motorcycles Limited, Lynn Lane, Shenstone, Nr. Lichfield, West Midlands.

Telephone: Shenstone 480633 Telex: 339478

A/B Norshen Shenstn.

INDEX

	Page		Page
Accessories	29	Numerical Index	32
Air Cleaner	13	Pedal	11
Cables	21	Rear Number Plate Support	23
Carburettor	13	Rear Wheel Adjuster	27
Carrier	17	Seat	21
Chain	19	Service Tools	31
Control Levers	21	Silencer	21
Decals	19	Spark Plug	11
Electrical Equipment	23	Speedometer	23
Engine	7	Speedometer Gearbox	25
Filler Cap	17	Speedometer Drive Cable	23
Footboard	17	Stand	17
Fork - Front	19	Steering Head Bearings	19
Frame	17	Suspension Unit	17
Fuel Pressure Release Valve	17	Swinging Arm	17
Handlebars	21	Tail Light	23
Headlight	23	Tool Tray	17
Horn	23	Tyre	25/27
Lighting/Horn Switch	23	Wheel Front	
Magneto	15	Wheel Rear	
Mudguard	19		



IMPORTANT

Please contact your retail dealer to obtain replacement parts.

Replacement parts or accessories must be approved by N.V.T. Motorcycles Ltd.

In this respect your attention is drawn to the terms and conditions of the guarantee a copy of which can be inspected at the premises of your dealer or distributor.

The information contained in this catalogue was correct and complete at the time of printing. Distributors will be informed of any subsequent alterations.

Engine and frame numbers must be quoted in full when ordering spare parts and in any correspondence relating to the machine. The engine number is located on the L.H. side of the engine, inboard of magneto cover joint. The frame number is located on L.H. engine plate below footboard.

Detailed information on dismantling and major overhauls will be found in the Workshop Manual available through your dealer.

LOCATING AND ORDERING PARTS.

An index is provided on page 2 to locate parts or group of parts

Select the required component from the illustrations, note it's reference number, and from the corresponding column on the opposite page, obtain correct name and part number.

OBTAINING PARTS.

Spare parts are not supplied directly to private owners from the factory, but should be obtained through their dealer. Parts which have to be obtained specially, may incur an additional postage charge.

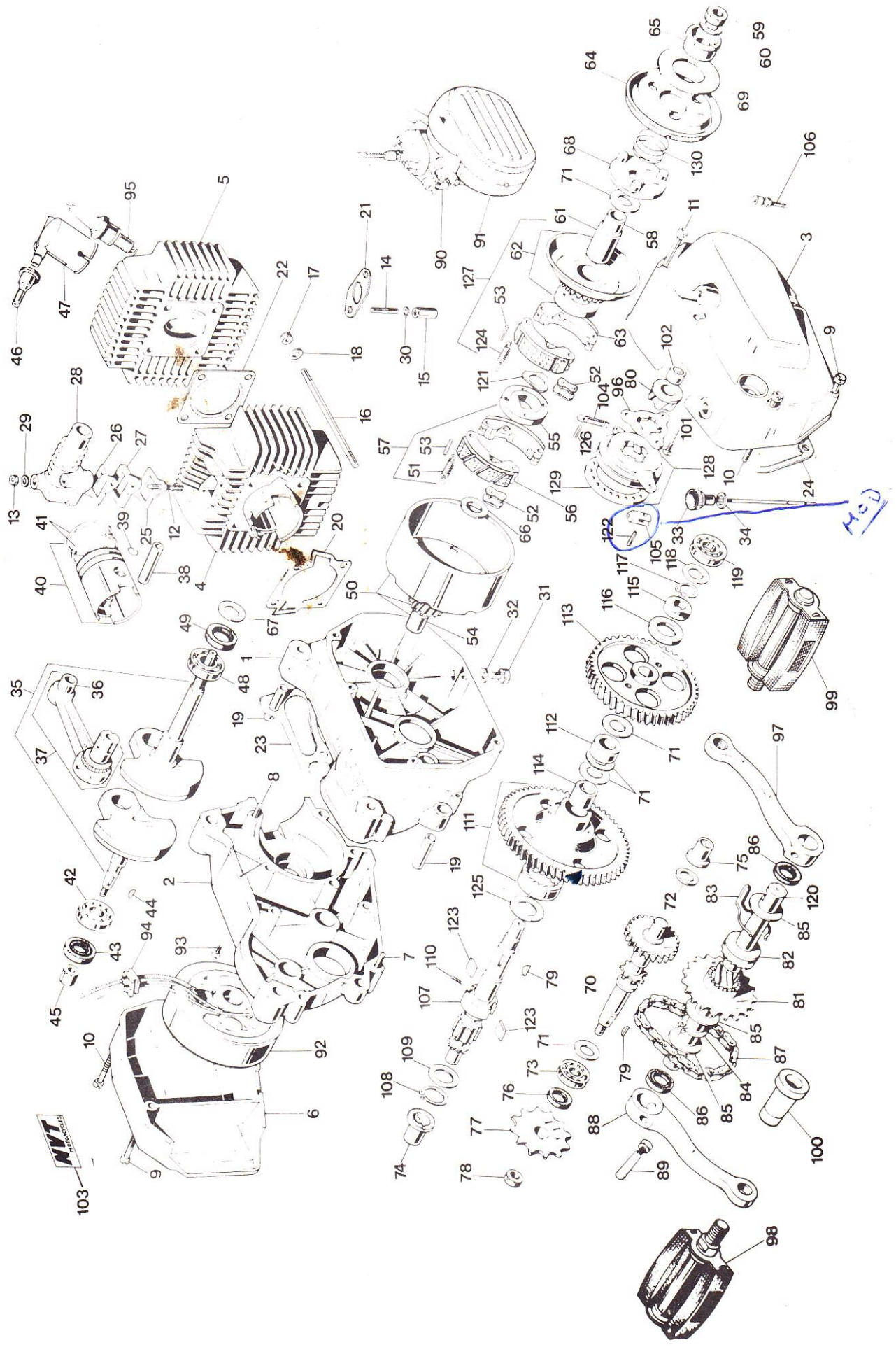
N.V.T. Motorcycles Ltd reserves the right to vary the specification of all mopeds and spare parts without notice and this information does not therefore constitute a term of any sale. All descriptions and claims are given and made in good faith but are intended to apply generally and variations in performance and construction of individual machines may occur. In particular, performance will be affected by conditions, circumstances and the rider.

- * When ordering painted parts add a suffix to component part number depending upon colour

/12 For Candy Apple Red, Light.

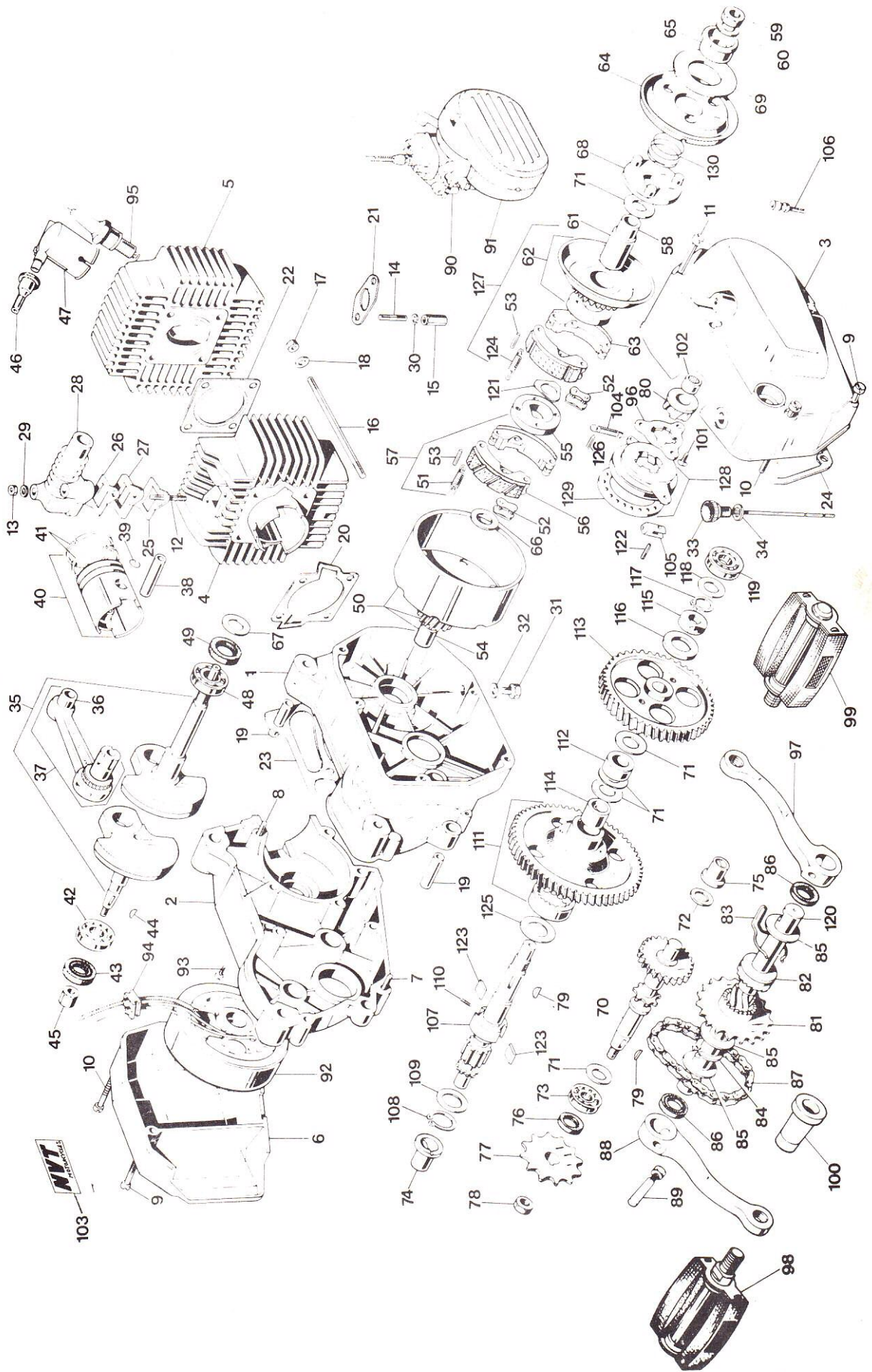
/09 For Black

EXAMPLE: Frame Part No. 09-0134
for a yellow machine, this
will become 09-0134/06.

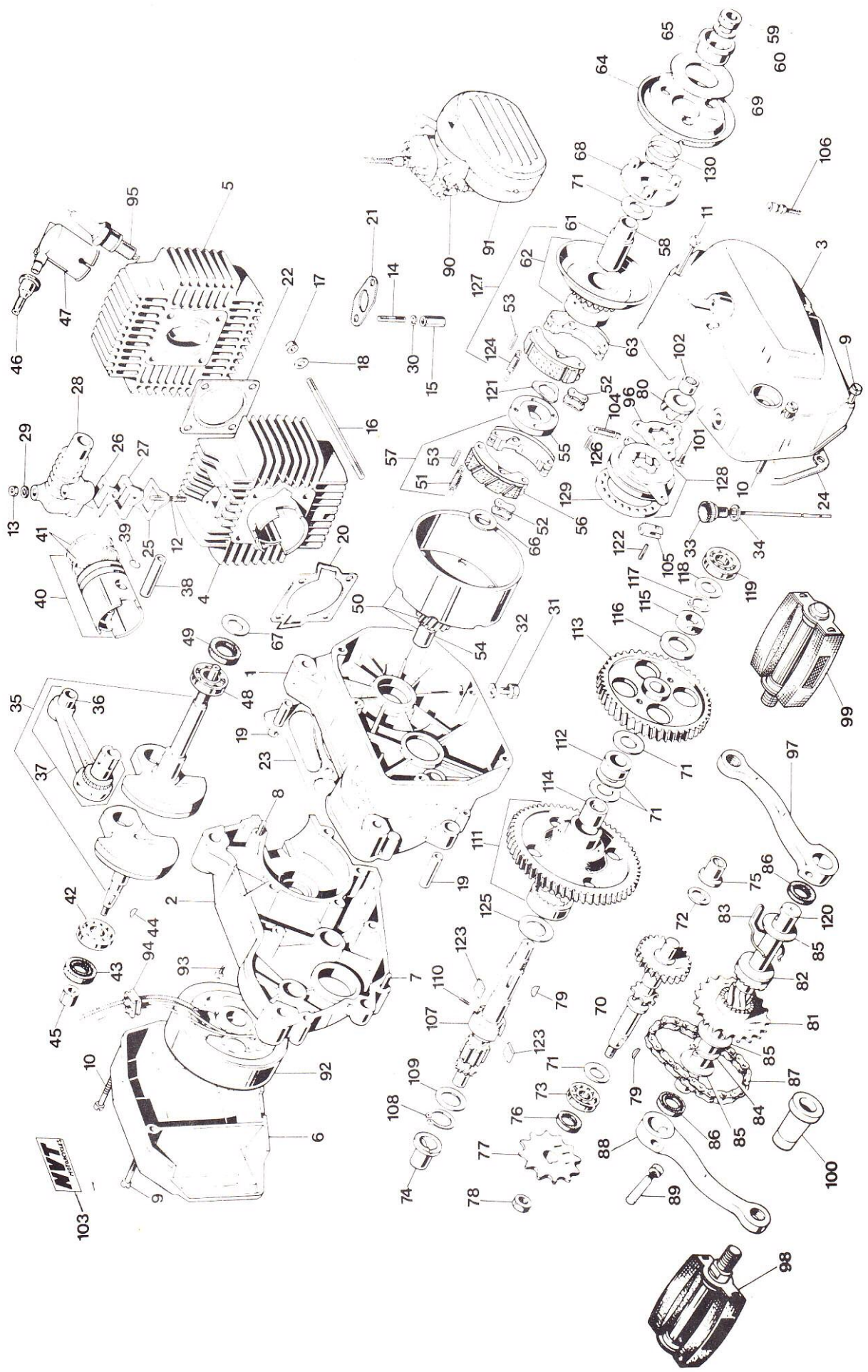


ENGINE

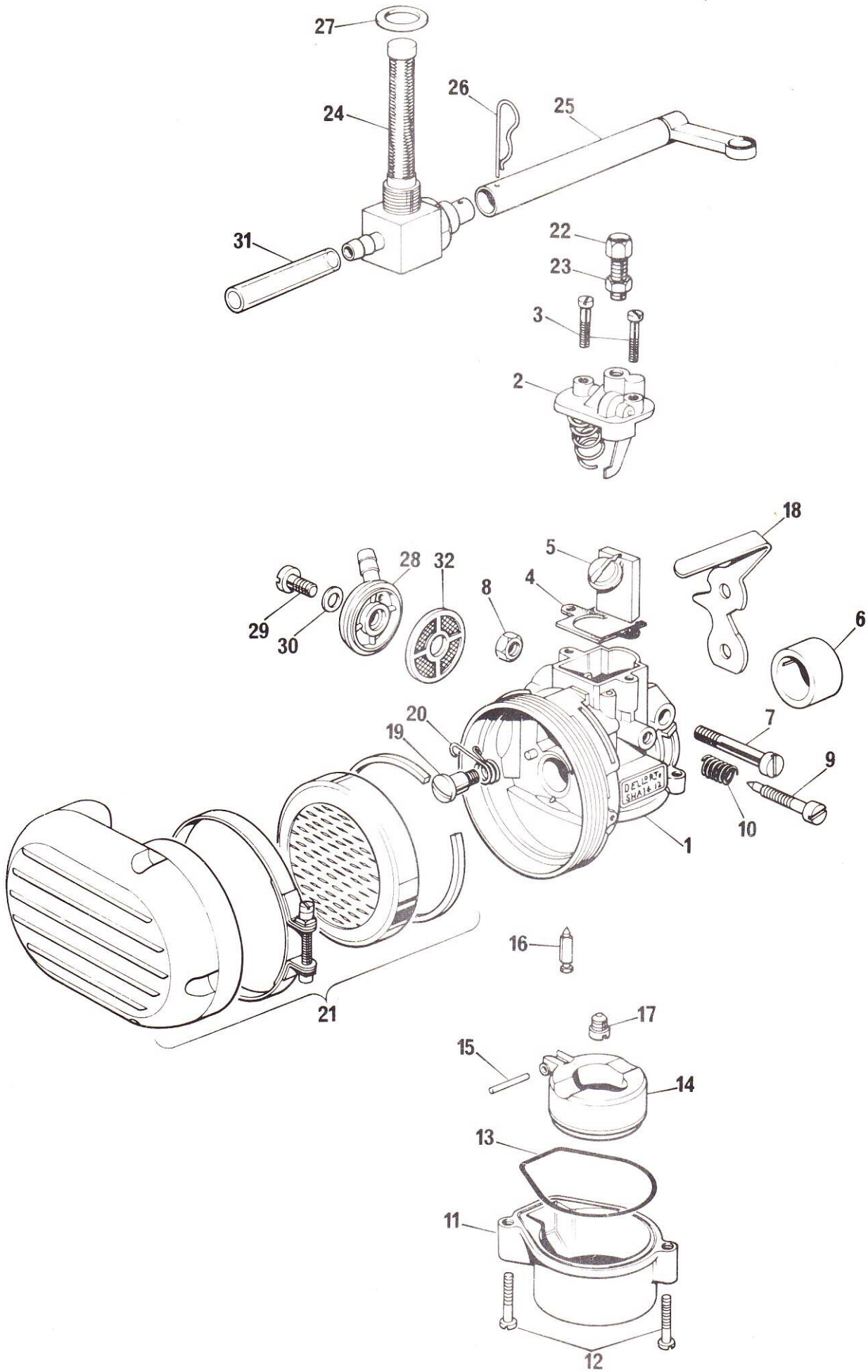
Ref.No.	Part No.	DESCRIPTION	Quantity
	09-0474	Engine complete	1
1	09-0490	R. H. crankcase	1
2	09-0002	L. H. crankcase	1
3	09-0491	R. H. side cover	1
4	09-0004	Cylinder	1
5	09-0005	Cylinder head	1
6	09-0006	L. H. side cover	1
7	09-0008	Screw 6 x 35 mm	1
8	09-0009	Screw 6 x 40 mm	8
9	09-0010	Screw 6 x 45 mm	2
10	09-0142	Screw 6 x 50 mm	2
11	09-0492	Screw 6 x 60 mm	4
12	09-0011	Stud, inlet manifold	2
13	23-2001/004	Nut 5 mm	2
14	09-0013	Stud - exhaust	2
15	09-0558	Exhaust stud nut	2
16	09-0015	Stud, cylinder	4
17	23-2002/004	Nut 6 mm	4
18	23-1556/004	Washer, plain	4
19	09-0018	Dowel	3
20	09-0019	Gasket, cylinder base	1
21	09-0020	Gasket, exhaust flange	1
22	09-0021	Gasket, cylinder head	1
23	09-0022	Gasket, crankcase joint	1
24	09-0023	Gasket, R.H. side cover	1
25	09-0024	Gasket, lower, inlet pipe	1
26	09-0025	Gasket, upper, inlet pipe	1
	09-0372	Gasket set (spares pack)	1
27	09-0026	Distance piece	1
28	09-0027	Inlet manifold	1
29	23-1555/004	Washer	2
30	23-1604/004	Spring washer	2
31	09-0030	Drain plug	2
32	09-0031	Washer	2
33	09-0493	Dip stick	1
34	09-0033	Washer for Dip stick	1
35	09-0494	Crankshaft assembly	1
36	09-0035	Small end bush	1
37	09-0036	Connecting rod C/W small end bush & big end bearing.	1
38	09-0037	Gudgeon pin	1
39	09-0038	Circlip	2
40	09-0039	Piston C/W rings	1
	09-0332	Piston C/W rings + .2 mm o/s	1
	09-0345	Piston C/W rings + .4 mm o/s	1



Ref.No.	Part No.	DESCRIPTION	Quantity
41	09-0040	Piston Ring	1
	09-0333	Piston ring + .2 mm o/s	1
	09-0346	Piston ring + .4 mm o/s	1
42	09-0041	Bearing main	1
43	09-0042	Seal crankcase	1
	09-0495	Shaft seals (spares pack)	1
44	09-0043	Woodruff key	1
45	09-0044	Rotor nut	1
46	09-0045	Waterproof cover H.T. lead	1
47	09-0046	Cap, spark plug (suppressed)	1
48	09-0496	Main bearing R.H.	1
49	09-0497	Oil seal R.H. Crankshaft	1
50	09-0498	Clutch housing - assembled	1
51	09-0050	Spring, clutch	2
52	09-0051	Link, shoe retaining	2
53	09-0052	Pivot pin	4
54	09-0499	Clutch housing bush	1
55	09-0500	Clutch centre - 1st gear	1
56	09-0501	Clutch shoe C/W lining - 1st gear	2
57	09-0502	Clutch assembled - 1st gear	1
58	09-0503	Spacer - 2nd gear pinion bush	1
59	09-0057	Nut, crankshaft	1
60	23-1558/004	Washer, crankshaft	1
61	09-0504	Bush 2nd gear pinion assembly	1
62	09-0505	2nd gear pinion/clutch shoe assy.	1
63	09-0506	2nd Gear clutch shoe	1
64	09-0507	Starting clutch plate	1
65	09-0508	Starting clutch centre	1
66	09-0064	Washer for clutch housing	1
67	09-0064	Washer, packing	1
68	09-0509	Starting clutch drive plate	1
69	09-0510	Starting clutch thrust washer	1
70	09-0068	Shaft & gear assembly, secondary	1
71	09-0064	Washer spacing (Ø.15)	5
72	09-0069	Washer spacing (Ø.13)	1
73	09-0070	Bearing	1
74	09-0071	Bush	1
75	09-0071	Bush	1
76	09-0073	Oil seal	1
77	09-0074	Sprocket, final drive 13T	1
78	09-0075	Nut, sprocket	1
79	09-0076	Woodruff key	2
80	09-0512	Starting clutch scroll	1
81	09-0078	Sprocket, 19T pedal shaft	1
82	09-0079	Ratchet	1
83	09-0080	Spring, ratchet	1
84	09-0081	Circlip	1
85	09-0082	Washer spacing	3
86	09-0083	Oil seal	2
87	09-0084	Chain (internal to pedal shaft)	1
88	09-0085	L. H. Crank	1

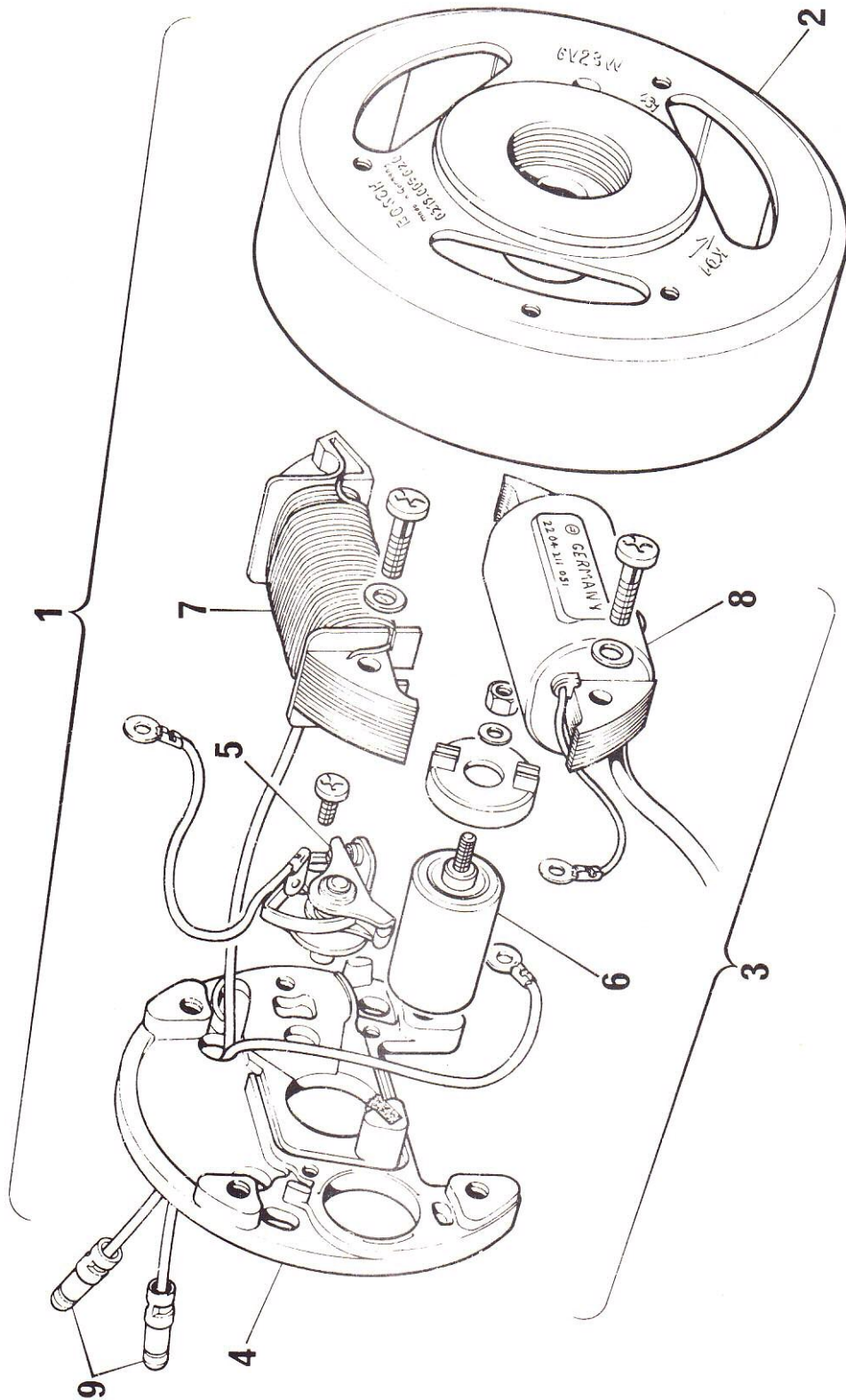


Ref.No.	Part No.	DESCRIPTION	Quantity
89	09-0086	Cotter pin, C/W nut & washer	2
90	09-0087	Carburettor (see page 00)	1
91	09-0121	Air cleaner (see page 00)	1
92	09-0089	Flywheel magneto (see page 00)	1
93	09-0090	Screw	2
94	09-009 1	Grommet	1
95	09-0092	Spark plug	1
96	09-0513	Scroll plate	1
97	09-0337	R. H. Crank	1
98	09-0281	Pedal L. H.	1
99	09-0338	Pedal R. H.	1
100	09-0285	Pedal shaft protection sleeve L.H.	1
101	09-0514	Scroll plate screw	3
102	09-0515	Scroll needle bearing	1
103	09-0383	Engine decal	1
	09-0358	Pedal	1 pair
	09-0359	Pedal crank	1 pair
104	09-0516	Thrust ring return spring	1
105	09-0523	Starting cable trunion	1
106	09-0525	Starting cable adjuster & locknut.	1
107	09-0526	Shaft - primary	1
108	09-0527	Circlip large - primary shaft	1
109	09-0528	Washer - spacing for primary shaft.	1
110	09-0529	Ratchet spring	2
111	09-0530	1st gear wheel complete with bush.	1
112	09-0531	Spacer - primary shaft	1
113	09-0532	2nd gear wheel	1
114	09-0533	Bush - 1st gear wheel	1
115	09-0534	Nut - primary shaft	1
116	09-0535	Washer for primary shaft nut	1
117	09-0536	Circlip small - primary shaft	1
118	09-0537	Washer - spacing primary shaft 12 mm.	1
119	09-0538	Bearing - primary shaft	1
120	09-0539	Shaft - pedal	1
121	09-0540	Triangular washer - spacing for crankshaft .	1
122	09-0541	Roll pin - for starting cable	1
123	09-0542	Ratchet pawl	2
124	09-0543	Spring 2nd gear clutch	2
125	09-0544	Washer for ratchet pawl	1
126	09-0545	Roll pin - for thrust ring spring	1
127	09-0546	Clutch shoe assembly - 2nd gear	1
128	09-0511	Starting thrust ring assembly	1
129	09-0552	Starting thrust ring race	1
130	09-0553	Starting clutch return spring	1



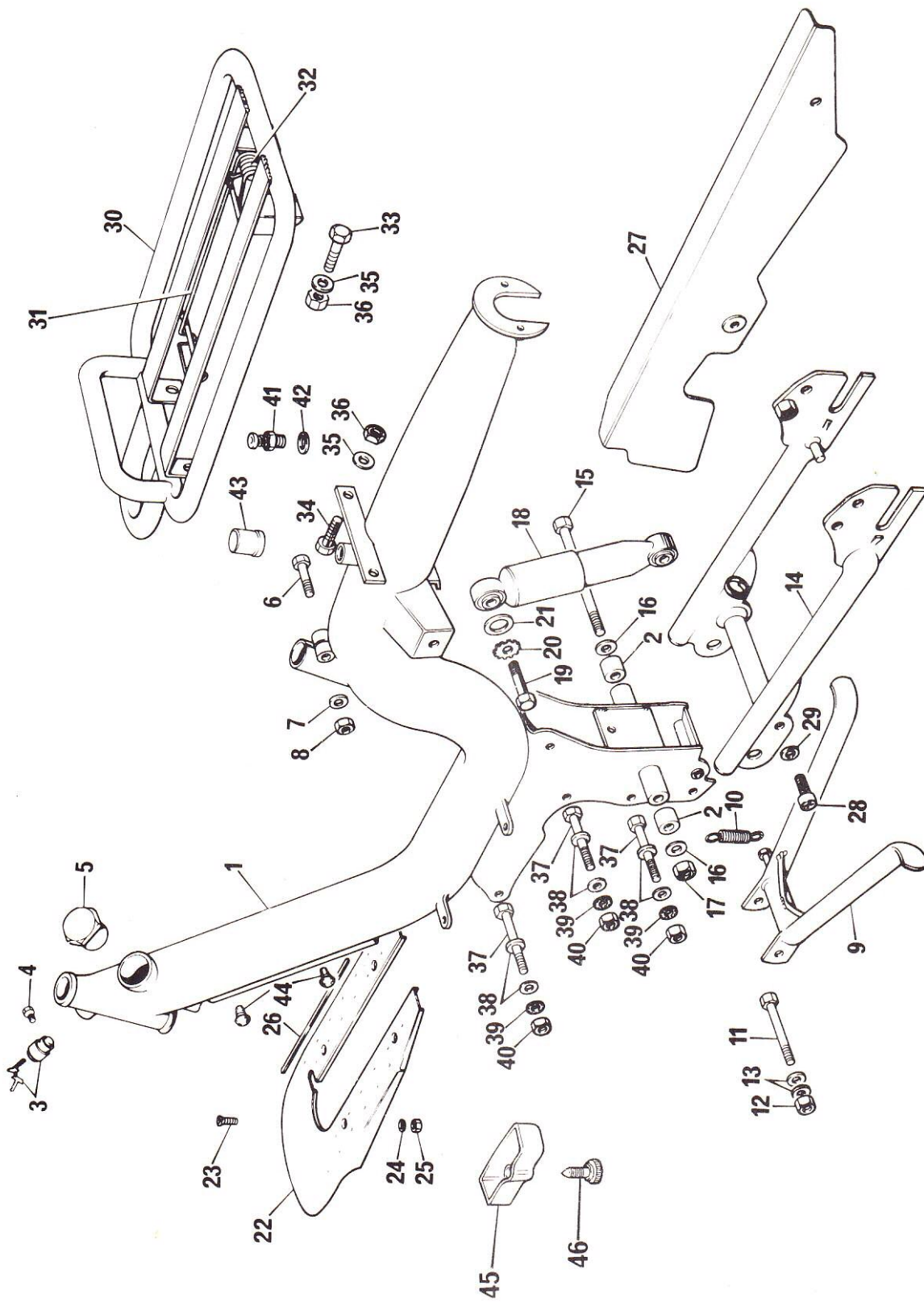
CARBURETTOR AND AIR CLEANER

Ref No.	Part No.	DESCRIPTION	Quantity
1	09-0087	Carburettor complete	1
2	09-0095	Top	1
3	09-0096	Screw, top	2
4	09-0097	Gasket, top	1
5	09-0098	Slide, throttle	1
6	09-0103	Sleeve, insulating	1
7	09-0104	Screw, clamping	1
8	09-0105	Nut, clamping screw	1
9	09-0106	Screw, throttle stop	1
10	09-0107	Spring, throttle stop screw	1
11	09-0108	Float bowl	1
12	09-0109	Screw, float bowl	2
13	09-0110	Sealing ring, float bowl	1
14	09-0111	Float	1
15	09-0112	Pivot pin	1
16	09-0113	Needle, float	1
17	09-0116	Jet, main size 47.	1
18	09-0117	Lever, starting	1
19	09-0118	Screw, lever pivot	1
20	09-0119	Spring, lever	1
21	09-0121	Air cleaner complete	1
22	09-0124	Adjuster, throttle cable	1
23	09-0125	Nut, Cable adjuster	1
24	09-0126	Tap, fuel complete	1
25	09-0127	Lever, extension, tap	1
26	09-0128	Clip, securing	1
27	09-0129	Washer, sealing	1
28	09-0131	Banjo, carburettor filter	1
29	09-0132	Screw, banjo	1
30	09-0133	Washer, banjo	1
31	09-0130	Petrol pipe - 4½ cms long	1
32	09-0115	Banjo filter	1



FLYWHEEL MAGNETO

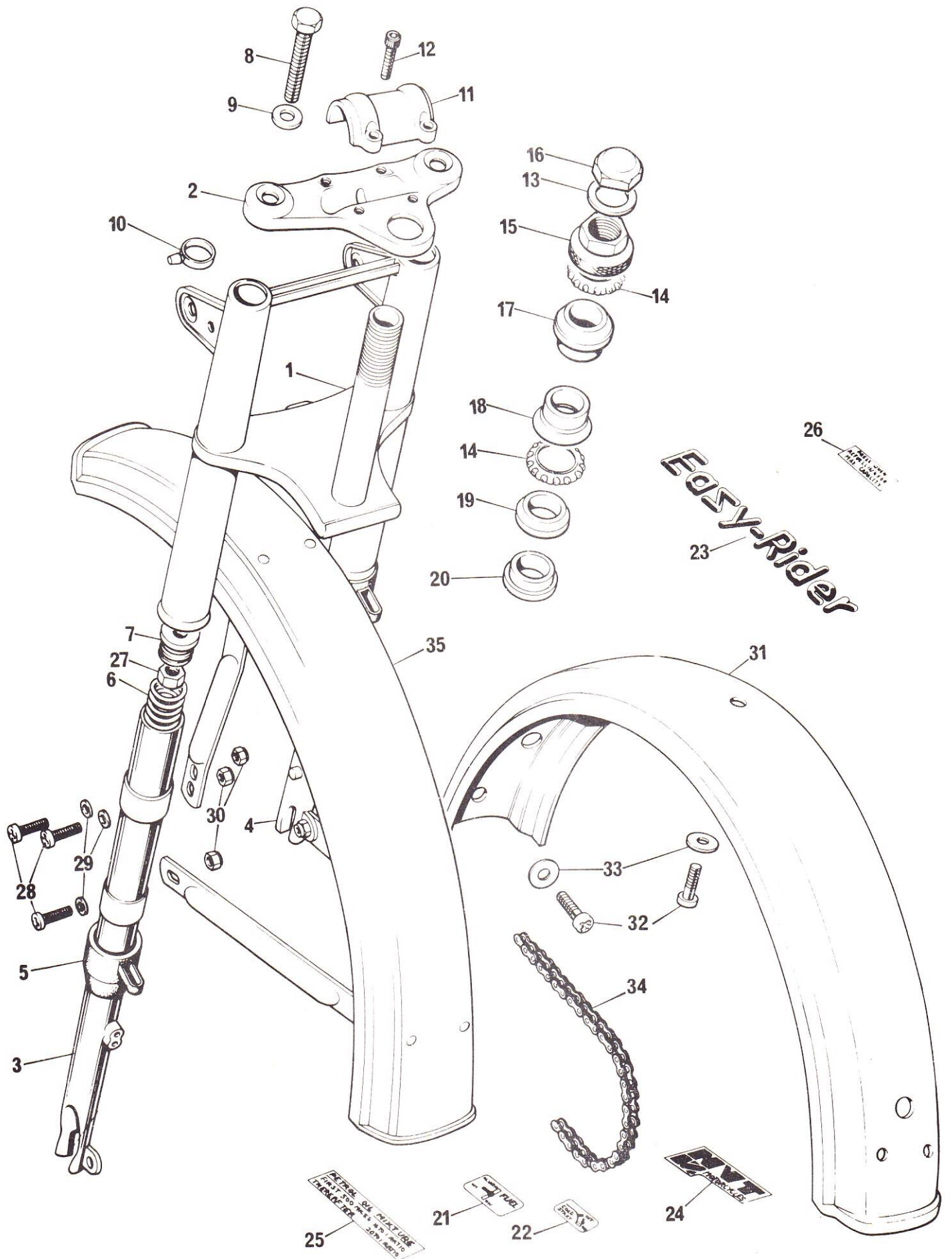
Ref. No.	Part No.	DESCRIPTION	Quantity
1	09-0089	Magneto complete	1
2	09-0406	Magneto flywheel	1
3	09-0407	Magneto backplate complete	1
4	09-0408	Magneto backplate	1
5	09-0367	Contact points	1
6	09-0368	Condenser	1
7	09-0369	Lighting coil	1
8	09-0370	Ignition coil	1
9	09-0339	Magneto lead bullet	2



FRAME, SWINGING ARM, SUSPENSION UNITS, CARRIER, STAND
AND FOOTBOARD

Ref.No.	Part No.	DESCRIPTION	Quantity
1	* 09-0134	Frame less fittings	1
2	09-0135	Bush, swinging arm pivot	2
3	09-0136	Steering lock C/W keys	1
4	09-0137	Bolt, lock securing	1
5	09-0138	Cap, fuel filler	1
6	23-1142/004	Bolt, pillar	1
7	23-1557/004	Washer, pillar	1
8	23-2003/004	Nut pillar	1
9	* 09-0143	Stand, centre	1
10	09-0144	Spring, stand	1
11	09-0145	Bolt, stand	1
12	09-0146	Nut, stand	1
13	23-1558/004	Washer, stand	2
14	* 09-0148	Swinging arm	1
15	09-0149	Bolt	1
16	23-1559/004	Washer	2
17	09-0151	Nut	1
18	09-0152	Suspension unit	2
19	23-1161/004	Bolt suspension unit	4
20	09-0154	Serrated washer	4
21	23-1558/004	Plain washer	4
22	* 09-0481	Footboard	1
23	09-0157	Screw, crosshead, footboard	4
24	23-1556/004	Washer, footboard	3
25	23-2002/004	Nut, footboard	3
26	09-0160	Resilient strip, footboard	4
27	09-0449	Chainguard	1
28	09-0161	Screw, crosshead	1
29	23-1556/004	Chainguard washer	1
30	09-0334	Carrier complete	1
31	09-0353	Carrier strap	1
32	09-0354	Carrier spring	1
33	23-1032/004	Bolt, carrier 12mm long.	2
34	09-0162	Bolt, carrier 14mm long.	2
35	23-1556/004	Washer, carrier	4
36	23-2002/004	Nut, carrier	4
37	23-1150/004	Bolt, power unit	3
38	23-1557/004	Washer, plain	6
39	09-0167	Washer, serrated	3
40	23-2003/004	Nut	3
41	09-0169	Pressure release valve	1
42	09-0289	Pressure release valve washer	1
43	09-0170	Cover, pressure release valve	1
44	09-0141	Blanking plug legshield mounting	4
45	09-0482	Tool box	1
46	09-0483	Tool box, screw	1

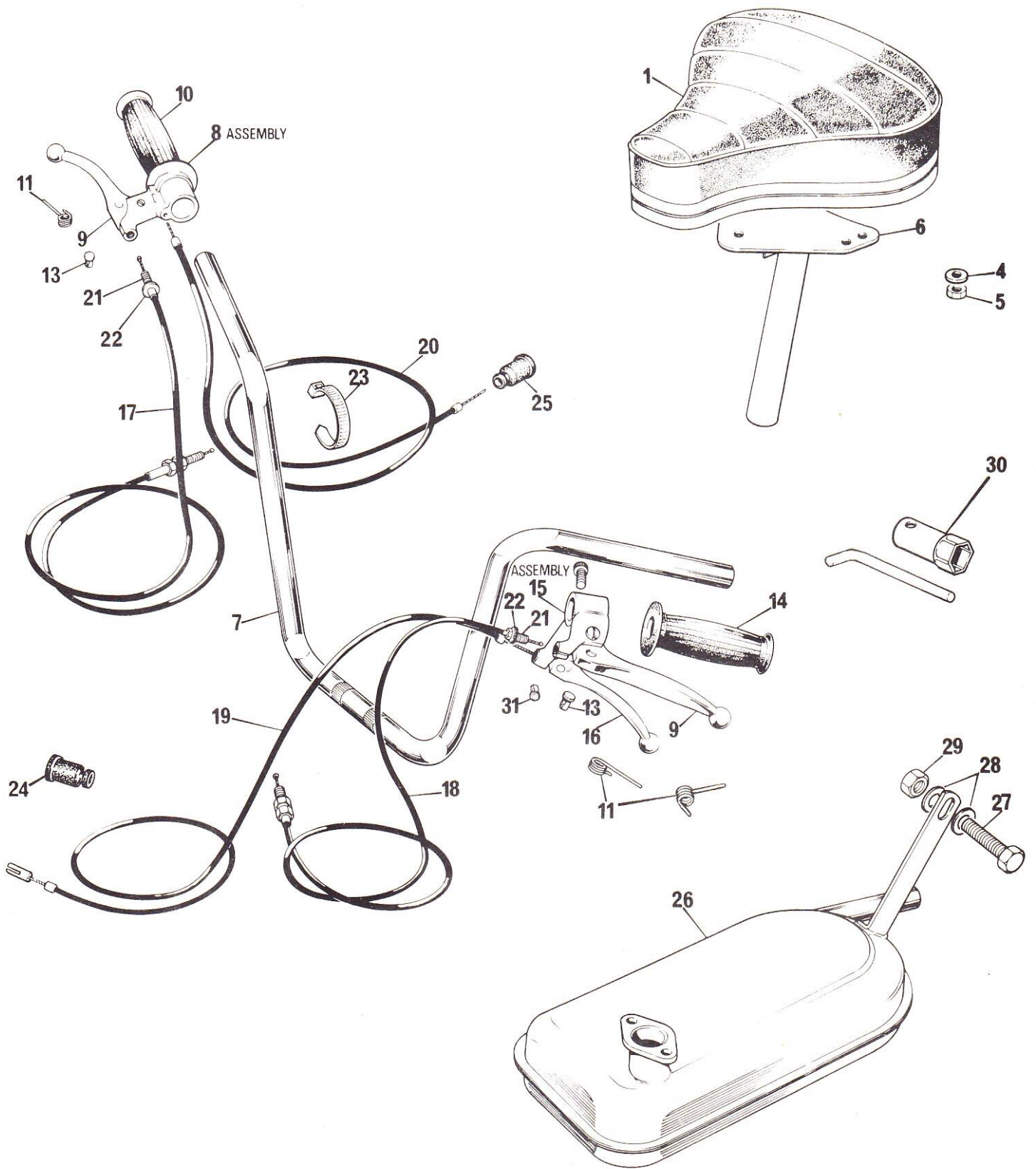
* See page 5 for ordering instructions
on painted parts.



FRONT FORKS, STEERING HEAD BEARINGS, MUDGUARDS,
CHAIN AND DECALS

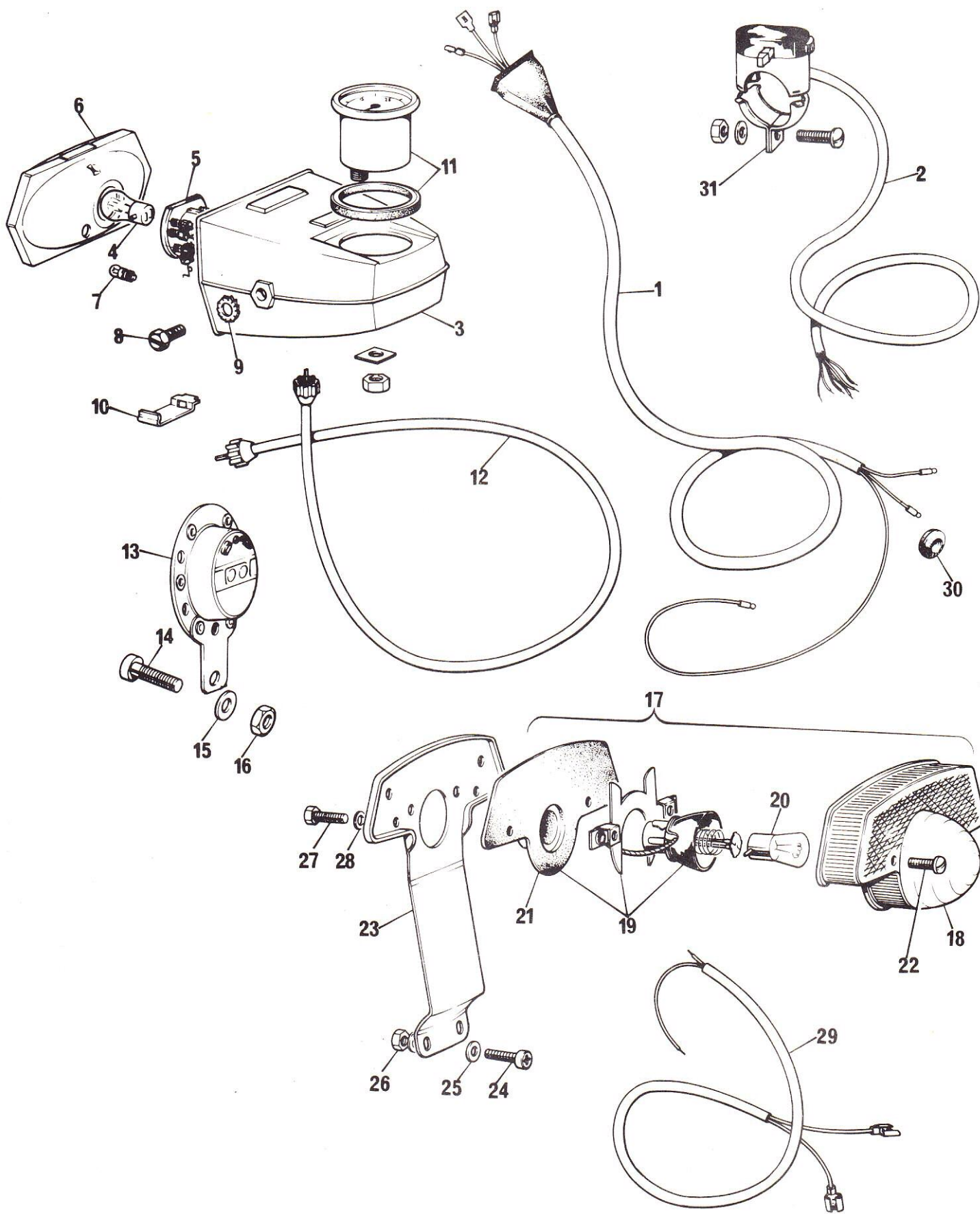
Ref. No.	Part No.	DESCRIPTION	Quantity
	* 09-0171	Fork Assembly	1
1	* 09-0172	Main tube and bottom yoke assembly.	1
2	* 09-0173	Top yoke	1
3	09-0174	Slider L. H.	1
4	09-0175	Slider R. H.	1
5	09-0176	Gaiter	2
6	09-0177	Spring	2
7	09-0555	Carrier, spring	2
8	23-1142/004	Bolt yoke	2
9	09-0180	Washer	2
10	09-0181	Guide, control cables	2
11	09-0182	Clamp, handlebar	1
12	09-0183	Socket screw, for clamp	4
	09-0184	Bearing & cup set	1
13	09-0185	Upper nut washer	1
14	09-0186	Ball bearing	2
15	09-0187	Upper nut and cup	1
16	09-0188	Upper nut	1
17	09-0349	Top frame cone	1
18	09-0350	Lower bearing cone	1
19	09-0351	Lower bearing	1
20	09-0190	Bearing shim collar	1
21	09-0199	Decal petrol tap	1
22	09-0202	Decal carburettor	1
23	09-0201	Decal "Easy Rider"(State colour reqd)	2
24	09-0200	Decal N.V.T. Motor Cycles Ltd.	1
25	09-0363	Decal petrol mix ratio	1
26	09-0207	Decal pressure release valve	1
27	23-2003/004	Nut for spring carrier	2
28	09-0161	Screw for front mudguard	6
29	23-1556/004	Washer for front mudguard	6
30	23-2002/004	Nut for front mudguard	6
31	09-0403	Mudguard - rear	1
32	09-0161	Screw for rear mudguard	2
33	23-1556/004	Washer for rear mudguard	2
34	09-0445	Chain	1
35	09-0402	Mudguard - front	1

* See page 5 for ordering instructions on painted parts.



SEAT, TOOL TRAY, HANDLEBARS, CONTROLS, CABLES AND SILENCER

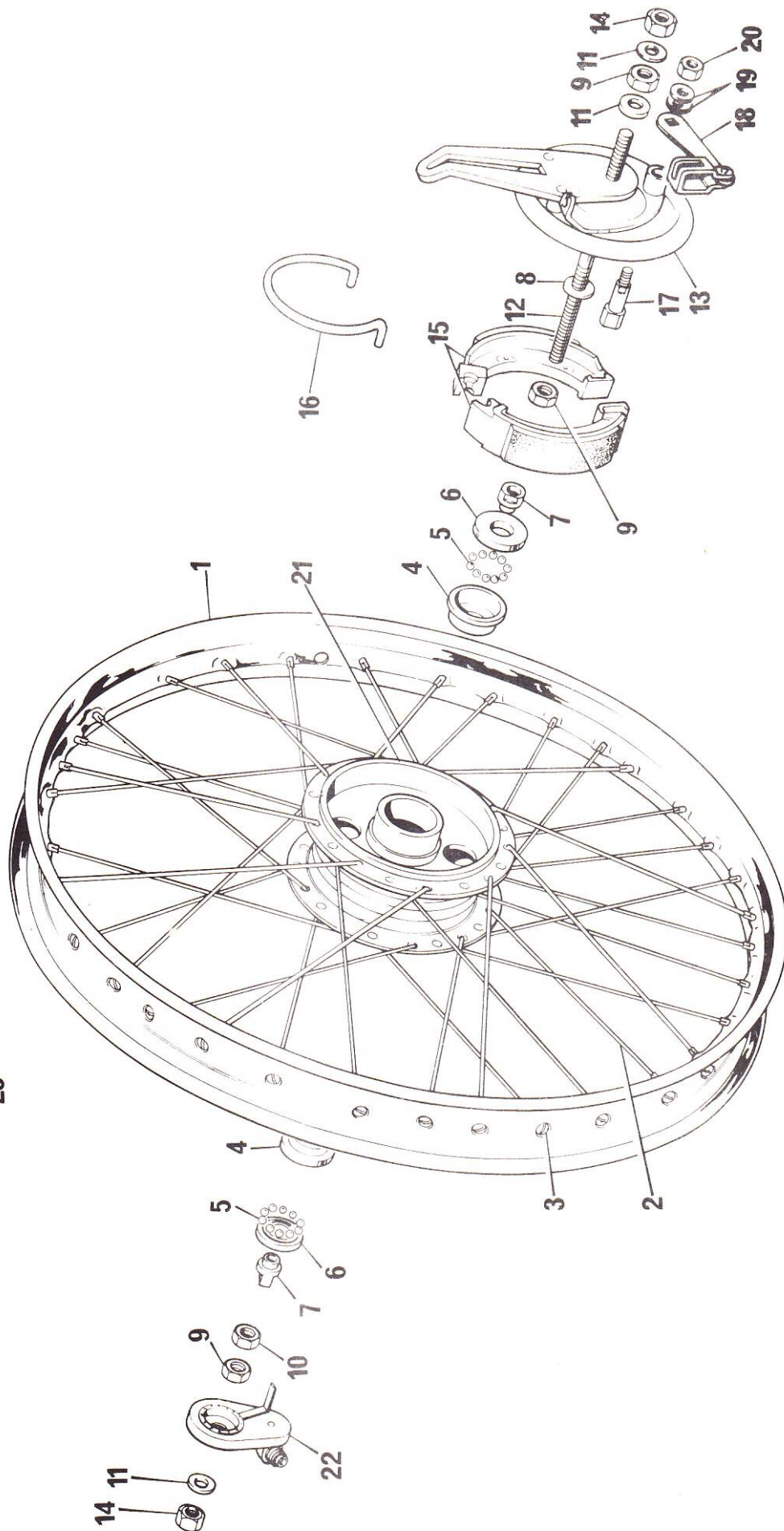
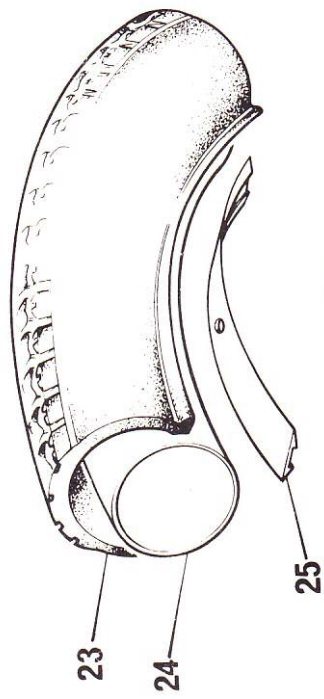
Ref. No.	Part No.	DESCRIPTION	Quantity
1	09-0578	Seat assy.	1
4	23-1556/004	Plain washer	3
5	23-2002/004	Nut	3
6	09-0139	Seat column	1
7	09-0244	Handlebar	1
8	09-0380	Twistgrip & brake lever assy.	1
9	09-0246	Lever, brake	2
10	09-0247	Grip only	1
11	09-0391	Control lever return spring	3
13	09-0362	Cable trunnion - brake	2
14	09-0248	Dummy grip	1
15	09-0249	Brake & starting lever assy.	1
16	09-0250	Lever, starting	1
17	09-0251	Cable, front brake	1
18	09-0252	Cable, rear brake	1
19	09-0556	Cable, starting	1
20	09-0254	Cable, throttle	1
21	09-0394	Cable, adjuster	2
22	09-0395	Cable, adjuster locknut	2
23	09-0255	Tie, control cables	2
24	09-0114	Starting cable boot	1
25	09-0114	Throttle cable boot	1
26	09-0256	Silencer	1
27	23-1040/004	Bolt, silencer fixing	1
28	23-1557/004	Washer, plain	2
29	23-2003/004	Nut	1
30	09-0257	Plug spanner	1
31	09-0444	Start Cable Trunnion	1



ELECTRICAL EQUIPMENT, REAR NUMBER PLATE SUPPORT
AND SPEEDOMETER

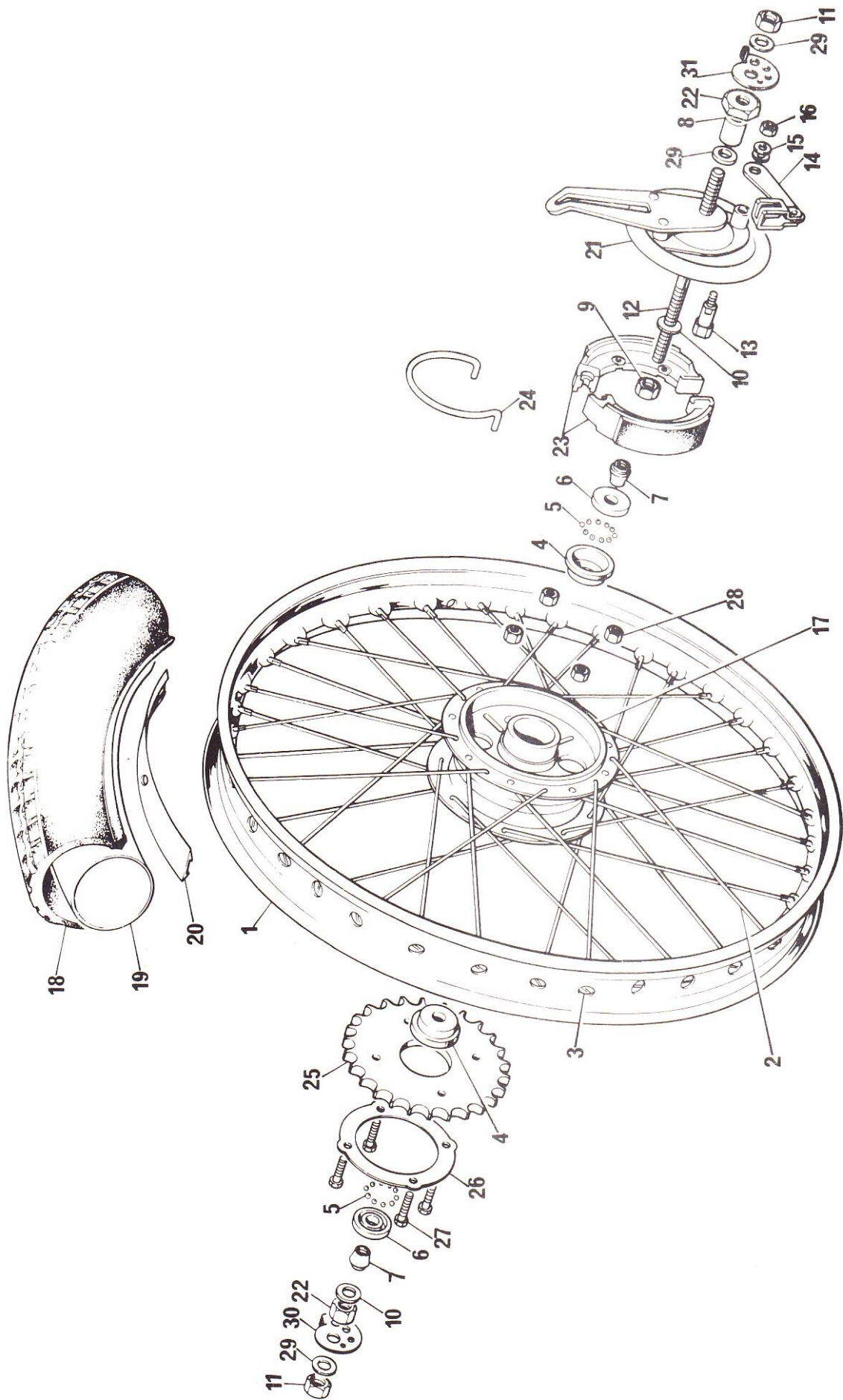
Ref.No.	Part No.	DESCRIPTION	Quantity
1	09-0258	Wiring harness, main	1
2	09-0259	Switch, lighting C/W wiring	1
3	09-0260	Headlamp shell	1
4	09-0261	Bulb, main 6v 18/18w	1
5	09-0288	Light unit, bulb holder	1
6	09-0287	Light unit, headlamp	1
7	09-0262	Bulb, pilot	1
8	09-0263	Bolt, attachment	2
9	09-0267	Headlamp bolt washer	2
10	09-0264	Clip, light unit securing	1
11	09-0269	Speedometer head C/W seal and nut, 40 mph.	1
12	09-0270	Speedometer drive cable	1
13	09-0265	Horn	1
14	09-0161	Screw, horn	1
15	23-1556/004	Washer	1
16	23-2002/004	Nut, horn	1
17	09-0271	Tail lamp complete	1
18	09-0272	Lens tail	1
19	09-0273	Tail, bulbholder assy.	1
20	09-0274	Tail, bulb	1
21	09-0275	Tail, rubber gasket	1
22	09-0276	Tail, screw lens	2
23	* 09-0277	Bracket, tail lamp/number plate	1
24	09-0161	Screw, bracket	4
25	23-1556/004	Washer, bracket	4
26	23-2002/004	Nut, bracket	2
27	09-0278	Tail light fixing screw	2
28	09-0279	Tail light fixing screw washer	2
29	09-0282	Harness, horn	1
30	09-0283	Grommet, tail lamp lead	2
31	09-0357	Lighting switch clip	1

* See page 5 for Ordering instructions
on painted parts.



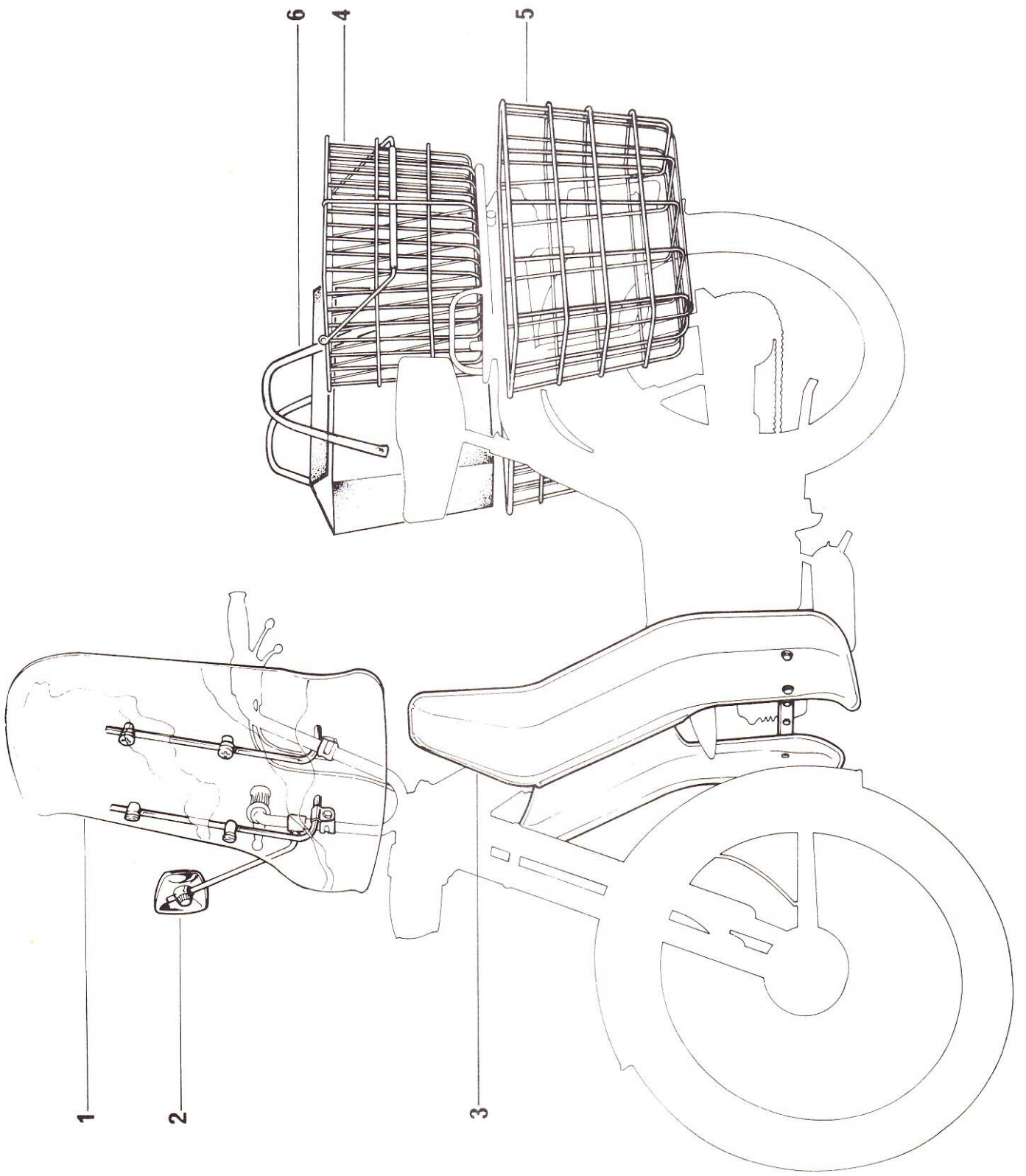
FRONT WHEEL

Ref.No.	Part No.	DESCRIPTION	Quantity
	09-0203	Wheel complete	1
	09-0204	Rim, hub, spokes assembled	1
1	09-0205	Rim	1
2	09-0206	Spoke	36
3	09-0230	Nipple	36
4	09-0208	Bearing cup	2
5	09-0209	1/4" ball	20
6	09-0210	Ball cover outer	2
7	09-0211	Cone	2
8	09-0212	Washer 1mm THK	1
9	09-0213	Nut, adjuster	3
10	09-0389	Nut, adjuster	1
11	09-0214	Washer	3
12	09-0215	Axle	1
13	09-0216	Brake plate	1
14	09-0233	Nut axle	2
15	09-0218	Shoe, brake C/W lining	2
16	09-0219	Spring, brake shoe	1
17	09-0220	Cam. brake operating	1
18	09-0221	Lever	1
19	09-0222	Washer	2
20	23-2002/004	Nut	1
21	09-0217	Hub	1
22	09-0226	Drive gearbox, speedometer	1
23	09-0342	Tyre	1
24	09-0343	Tube	1
25	09-0344	Rim band	1



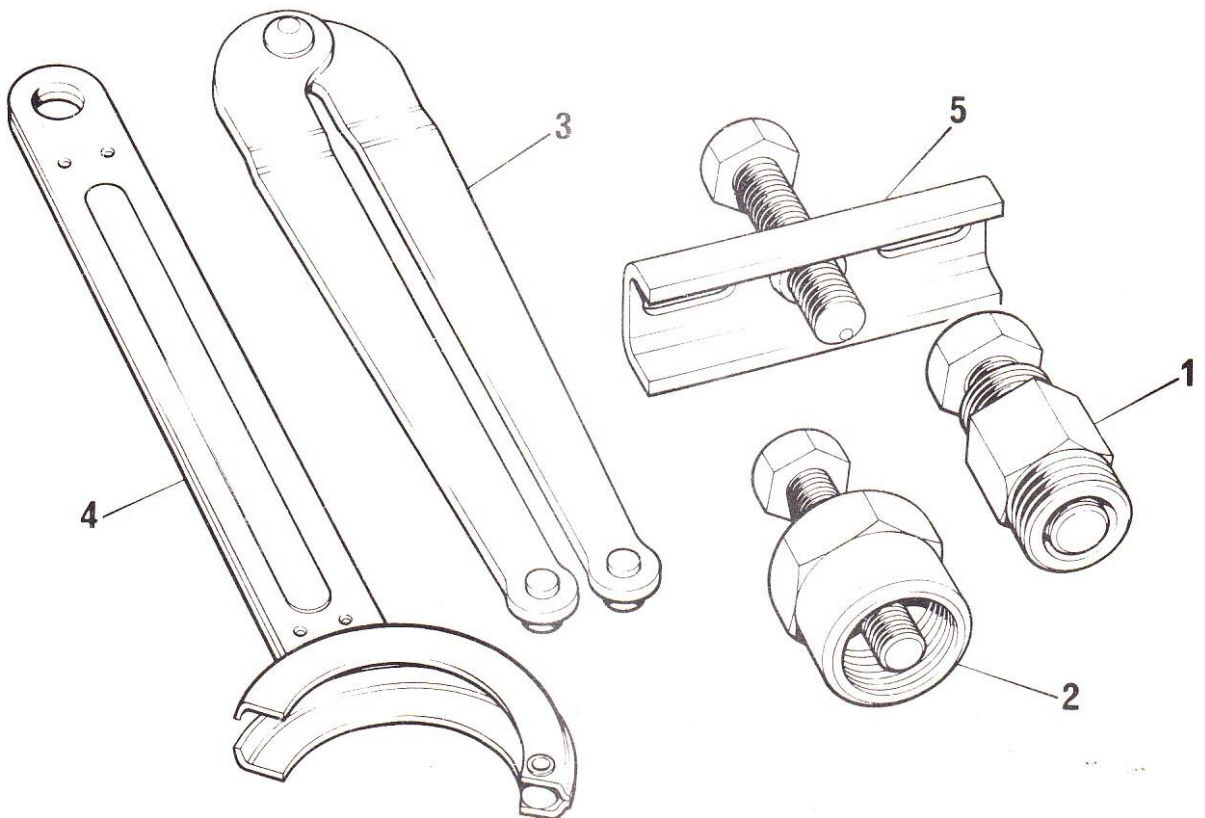
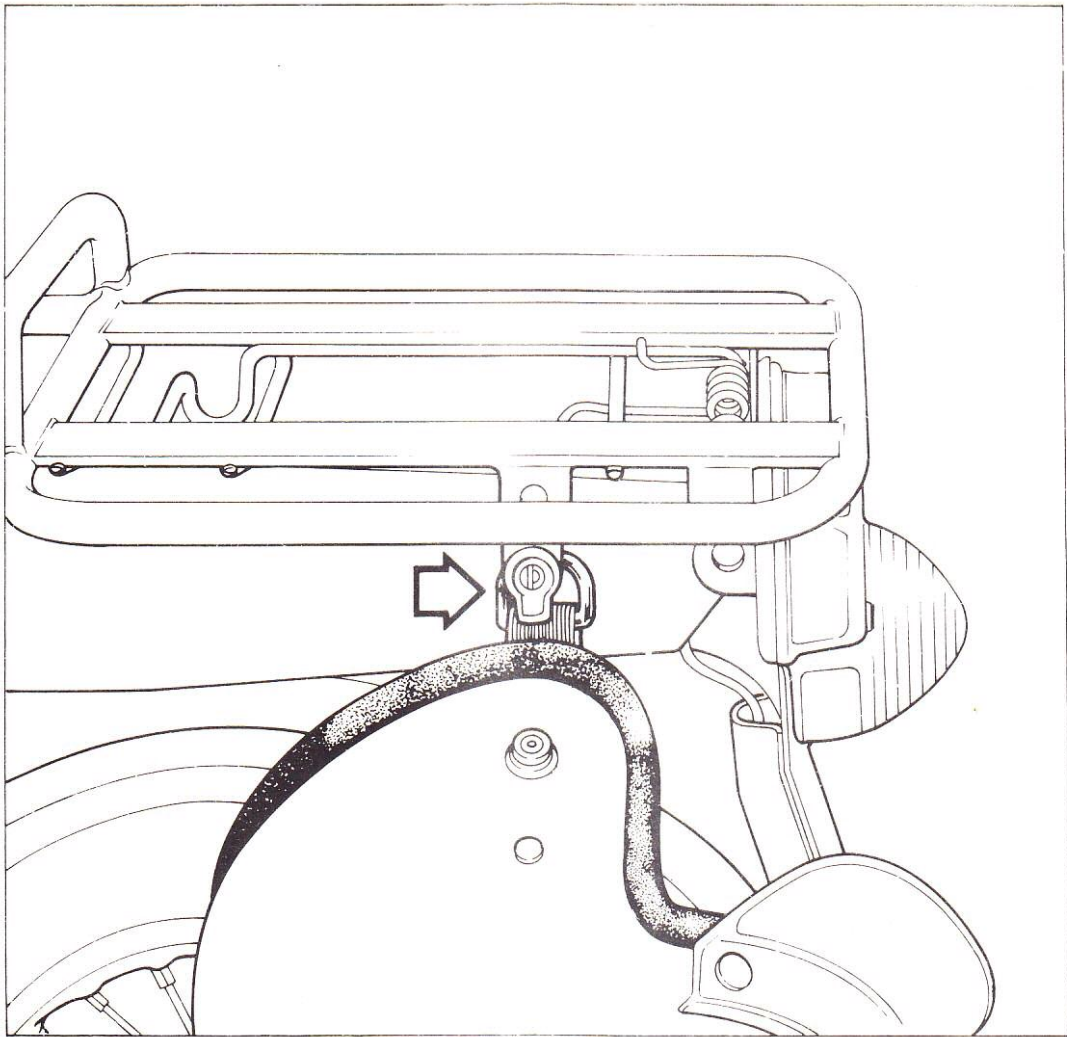
REAR WHEEL

Ref.No.	Part No.	DESCRIPTION	Quantity
	09-0227	Wheel complete	1
	09-0228	Rim, hub, spokes assembled	1
1	09-0205	Rim	1
2	09-0229	Spoke	36
3	09-0230	Nipple	36
4	09-0208	Bearing cup	2
5	09-0209	1/4" ball	20
6	09-0210	Ball cover outer	2
7	09-0211	Cone	2
8	09-0223	Spacer	1
9	09-0213	Nut adjuster	1
10	09-0212	Washer 1mm Thick	2
11	09-0233	Nut, axle	2
12	09-0387	Axle	1
13	09-0220	Cam brake operating	1
14	09-0388	Lever, brake operating	1
15	09-0222	Washer	2
16	23-2002/004	Nut	1
17	09-0390	Hub	1
18	09-0342	Tyre	1
19	09-0343	Tube	1
20	09-0344	Rim band	1
21	09-0231	Brake plate	1
22	09-0232	Nut	2
23	09-0218	Shoe, brake C/W lining	2
24	09-0219	Spring, brake shoe	1
25	09-0234	Sprocket rear - 30T	1
26	09-0235	Lockplate sprocket	1
27	09-0236	Bolt sprocket	4
28	09-0243	Nut sprocket	4
29	09-0214	Washer	3
30	09-0360	L. H. wheel adjuster	1
31	09-0366	R. H. wheel adjuster	1



ACCESSORIES

Ref No.	Part No.	DESCRIPTION	Quantity
1	09-0298	Windscreen complete	1
	09-0300	Windscreen blade	1
	09-0299	Windscreen stay	2
	08-1340	Stay end cap	4
	08-1297	Nylon eye bolt	4
	08-1298	Nylon distance piece	4
	76-1018	Nylon screw	4
	08-1018	Clip	2
	08-1204	Clip	2
	68-8059	Distance piece	2
	23-1606/004	Spring washer	2
	23-1145/004	Bolt	2
	23-2003/004	Nut	2
	2	09-0319	Mirror complete
09-0320		Mirror head assembly	1
3	09-0308	Legshield complete	1
	09-0309	Legshield L. H.	1
	09-0310	Legshield R. H.	1
	09-0314	Legshield stay	1
	09-0315	Stay/cylinder head nut	2
	09-0162	Stay/cylinder head bolt	2
	23-1556/004	Stay/cylinder head bolt washer	2
	09-0162	Stay bolt	2
	23-1556/004	Stay bolt washer	2
	09-0378	Stay bolt washer large	2
	23-2002/004	Stay bolt nut	2
	09-0313	Legshield blade screw	4
	23-1554/004	Legshield blade screw washer	4
	09-0311	Legshield blade fastener	4
4	09-0324	Carrier basket complete	1
5	09-0452	Panniers complete	1
	09-0453	Pannier basket	2
	09-0455	Basket rear support bracket L. H.	1
	09-0463	Basket rear support bracket R. H.	1
	09-0456	Basket rear support rod	1
	09-0457	Basket top bracket	2
	09-0458	Basket bottom bracket	2
	23-2002/004	Rear support rod nut	4
	23-1556/004	Rear support rod washer	2
	09-0161	Basket Screw	6
	23-1556/004	Basket washer	12
	23-2002/004	Basket nut	6
	6	09-0454	Pannier bag



ACCESSORIES

Ref. No.	Part No.	DESCRIPTION	Quantity
	09-0327	Helmet lock	1

ENGINE SERVICE TOOLS

Ref No.	Part No.	DESCRIPTION	Quantity
1	09-0292	Magneto extractor	1
2	09-0293	Sprocket extractor	1
3	09-0294	Magneto & clutch spanner	1
4	09-0295	Sprocket spanner	1
5	09-0296	Clutch & transmission gear extractor.	1

Spares Number	Page Number	Ref Number	Quantity
08-1018	29	-	2
1204	29	-	2
1297	29	-	4
1298	29	-	4
1340	29	-	4
09-0002	7	2	1
4	7	4	1
5	7	5	1
6	7	6	1
8	7	7	1
9	7	8	8
10	7	9	2
11	7	12	2
13	7	14	2
15	7	16	4
18	7	19	3
19	7	20	1
20	7	21	1
21	7	22	1
22	7	23	1
23	7	24	1
24	7	25	1
25	7	26	1
26	7	27	1
27	7	28	1
30	7	31	2
31	7	32	2
33	7	34	1
35	7	36	1
36	7	37	1
37	7	38	1
38	7	39	1
39	7	40	1
40	9	41	1
41	9	42	1
42	9	43	1
43	9	44	1
44	9	45	1
45	9	46	1
46	9	47	1
50	9	51	2
51	9	52	2
52	9	53	2
57	9	59	1
64	9	66	1
64	9	67	1
64	9	71	5
68	9	70	1
69	9	77	1

Spares Number	Page Number	Ref Number	Quantity
09-0070	9	73	1
71	9	74	1
71	9	75	1
73	9	76	1
74	9	77	1
75	9	78	1
76	9	79	2
78	9	81	1
79	9	82	1
80	9	83	1
81	9	84	1
82	9	85	3
83	9	86	2
84	9	87	1
85	9	88	1
86	11	89	2
87	11	90	1
87	13	1	1
89	11	92	1
89	15	1	1
90	11	93	2
91	11	94	1
92	11	95	1
95	13	2	1
96	13	3	2
97	13	4	1
98	13	5	1
103	13	6	1
04	13	7	1
05	13	8	1
06	13	9	1
07	13	10	1
08	13	11	1
09	13	12	2
10	13	13	1
11	13	14	1
12	13	15	1
13	13	16	1
14	21	25	1
15	13	32	1
16	13	17	1
17	13	18	1
18	13	19	1
19	13	20	1
21	13	21	1
21	11	91	1
24	13	22	1
25	13	23	1
26	13	24	1
27	13	25	1

Spares Number	Page Number	Ref Number	Quantity	Spares Number	Page Number	Ref Number	Quantity
09-01 28	13	26	1	09-0188	19	16	1
29	13	27	1	90	19	20	1
30	13	31	1	99	19	21	1
31	13	28	1	200	19	24	1
32	13	29	1	01	19	23	2
33	13	30	1	02	19	22	1
34	17	1	1	03	25	-	1
35	17	2	2	04	25	-	1
36	17	3	1	05	25	1	1
37	17	4	1	05	27	1	1
38	17	5	1	06	25	2	36
39	21	6	1	07	19	26	1
41	17	44	4	08	25	4	2
42	7	10	2	08	27	4	2
43	17	9	1	09	25	5	20
44	17	10	1	09	27	5	20
45	17	11	1	10	25	6	2
46	17	12	1	10	27	6	2
48	17	14	1	11	25	7	2
49	17	15	1	11	27	7	2
51	17	17	1	12	25	8	1
52	17	18	2	12	27	10	2
54	17	20	4	13	25	9	3
57	17	23	4	13	27	9	1
60	17	26	4	14	25	11	3
61	17	28	1	14	27	29	3
61	19	28	6	15	25	12	1
61	19	32	2	16	25	13	1
61	23	14	1	17	25	21	1
61	23	24	4	18	25	15	2
61	29	-	6	18	27	23	2
62	17	34	2	19	25	16	1
62	29	-	2	19	27	24	1
62	29	-	2	20	25	17	1
67	17	39	3	20	27	13	1
69	17	41	1	21	25	18	1
70	17	43	1	22	25	19	2
71	19	-	1	22	27	15	2
72	19	1	1	22	25	19	2
73	19	2	1	23	27	8	1
74	19	3	1	26	25	22	1
75	19	4	1	27	27	-	1
76	19	5	2	28	27	-	1
77	19	6	2	29	27	2	36
80	19	9	2	30	25	3	36
81	19	10	2	30	27	3	36
82	19	11	1	31	27	21	1
83	19	12	4	32	27	22	2
84	19	-	1	33	27	11	2
85	19	13	1	33	25	14	2
86	19	14	2	34	27	25	1
87	19	15	1	35	27	26	1

Spares Number	Page Number	Ref Number	Quantity	Spares Number	Page Number	Ref Number	Quantity
09-02 36	27	27	4	09-03 10	29	-	1
43	27	28	4	11	29	-	4
44	21	7	1	13	29	-	4
46	21	9	2	14	29	-	1
47	21	10	1	15	29	-	2
48	21	14	1	19	29	2	1
49	21	15	1	20	29	-	1
50	21	16	1	24	29	4	1
51	21	17	1	27	31	-	1
52	21	18	1	32	7	-	1
54	21	20	1	33	9	-	1
55	21	23	2	34	17	30	1
56	21	26	1	37	11	97	1
57	21	30	1	38	11	99	1
58	23	1	1	39	15	9	1
59	23	2	1	42	25	23	1
60	23	3	1	42	27	18	1
61	23	4	1	43	25	24	1
62	23	7	1	43	27	19	1
63	23	8	2	44	27	20	1
64	23	10	1	44	25	25	1
65	23	13	1	45	7	-	1
67	23	9	2	46	9	-	1
69	23	11	1	49	19	17	1
70	23	12	1	50	19	18	1
71	23	17	1	51	19	19	1
72	23	18	1	53	17	31	1
73	23	19	1	54	17	32	1
74	23	20	1	57	23	31	1
75	23	21	1	58	11	-	1 pair
76	23	22	2	59	11	-	1 pair
77	23	23	1	60	27	30	1
78	23	27	2	62	21	13	2
79	23	28	2	62	21	13	2
81	11	98	1	63	19	25	1
82	23	29	1	66	27	31	1
83	23	30	2	67	15	5	1
85	11	100	1	68	15	6	1
87	23	6	1	69	15	7	1
88	23	5	1	70	15	8	1
89	17	42	1	72	7	-	1
90	21	24	1	78	29	-	2
92	31	1	1	80	21	8	1
93	31	2	1	83	11	103	1
94	31	3	1	87	27	12	1
95	31	4	1	88	27	14	1
96	31	5	1	89	25	10	1
98	29	1	1	90	27	17	1
99	29	-	1	91	21	11	3
300	29	-	1	92	21	12	1
08	29	3	1	94	21	21	2
09	29	-	1	95	21	22	2

Spares Number	Page Number	Ref Number	Quantity	Spares Number	Page Number	Ref Number	Quantity
09-0402	19	35	1	09-0528	11	109	1
03	19	31	1	29	11	110	2
06	15	2	1	30	11	111	1
07	15	3	1	31	11	112	1
08	15	4	1	32	11	113	1
44	21	31	1	33	11	114	1
45	19	34	1	34	11	115	1
49	17	27	1	35	11	116	1
52	29	5	1	36	11	117	1
53	29	-	2	37	11	118	1
54	29	6	2	38	11	119	1
55	29	-	1	39	11	120	1
56	29	-	1	40	11	121	1
57	29	-	1	41	11	122	1
58	29	-	1	42	11	123	2
63	29	-	1	43	11	124	2
74	7	-	1	44	11	125	1
81	17	22	1	45	11	126	1
82	17	45	1	46	11	127	1
83	17	46	1	52	11	129	1
90	7	1	1	53	11	130	1
91	7	3	1	55	19	7	2
92	7	11	4	56	21	19	1
93	7	33	1	58	7	15	2
94	7	35	1	09-0578	21	1	1
95	9	-	1				
96	9	48	1				
97	9	49	1	23-2001/004	7	13	2
98	9	50	1	2/004	7	17	4
99	9	54	1	2/004	17	25	3
500	9	55	1	2/004	17	36	4
01	9	56	2	2/004	19	30	6
02	9	57	1	2/004	21	5	3
03	9	58	1	2/004	23	16	1
04	9	61	1	2/004	23	26	2
05	9	62	1	2/004	25	20	1
06	9	63	1	2/004	27	16	1
07	9	64	1	2/004	29	-	2
08	9	65	1	2/004	29	-	4
09	9	68	1	2/004	29	-	6
10	9	69	1	3/004	29	-	2
11	11	128	1	3/004	17	8	1
12	9	80	1	3/004	17	40	3
13	11	96	1	3/004	19	27	2
14	11	101	3	3/004	21	29	1
15	11	102	1				
16	11	104	1				
23	11	105	1				
25	11	106	1	68-8059	29	-	2
26	11	107	1	76-1018	29	-	4
27	11	108	1				

Spares Number	Page Number	Ref Number	Quantity
23-1032/004	17	33	2
40/004	21	27	1
1142/004	17	6	1
1142/004	19	8	2
1145/004	29	-	2
1150/004	17	37	3
1161/004	17	20	4
1554/004	29	-	4
1555/004	7	29	2
56/004	7	18	4
56/004	17	24	3
56/004	17	29	1
56/004	17	35	4
56/004	19	29	6
56/004	19	33	2
56/004	21	4	3
56/004	23	15	1
56/004	23	25	4
56/004	29	-	2
56/004	29	-	2
56/004	29	-	2
56/004	29	-	12
57/004	17	7	1
57/004	17	38	6
57/004	21	28	2
58/004	9	60	1
58/004	17	13	2
58/004	17	21	4
59/004	17	16	2
1604/004	7	30	2
1606/004	29	-	2

