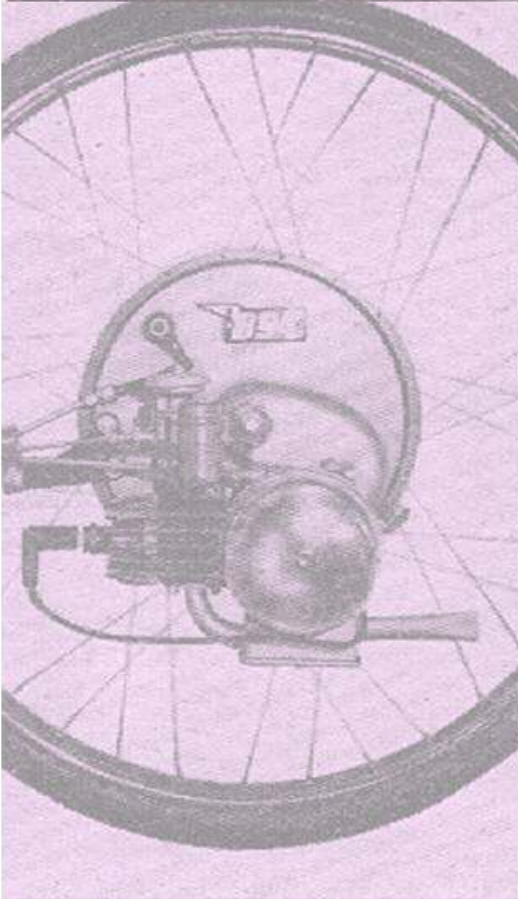


IceniCAM Information Service



Illustrated Parts List
For

Easy-Rider

Commencing Engine No. 00001 - Frame No. ERBA 00001.

© N.V.T. Motorcycles Ltd. 1976.

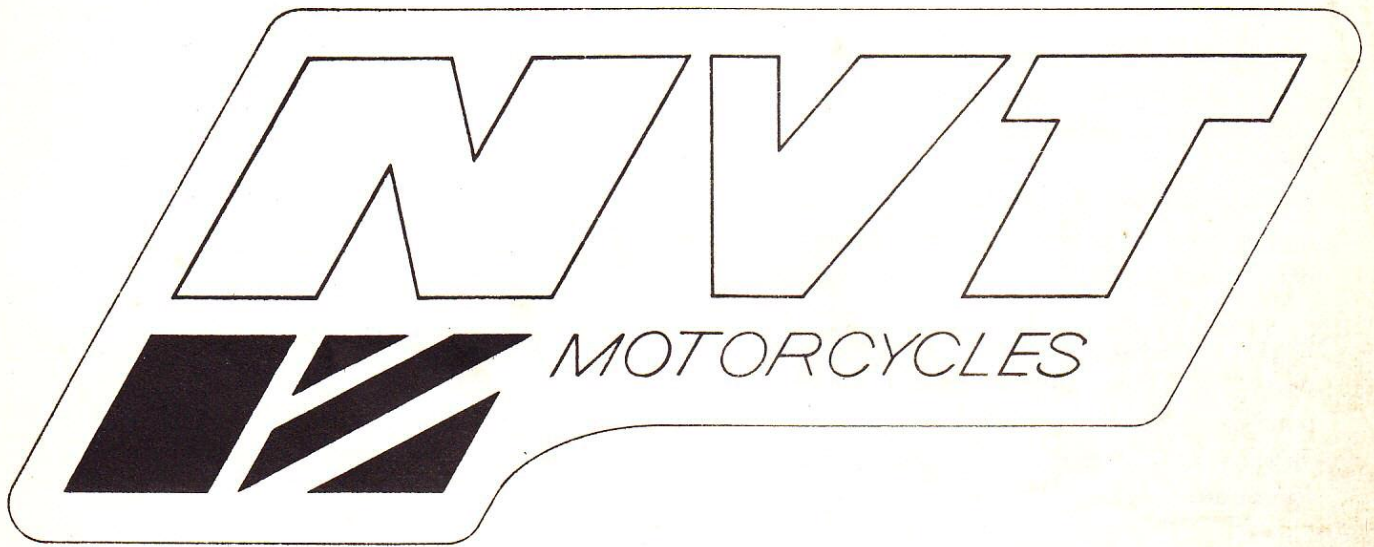
N.V.T. Motorcycles Limited, Lynn Lane, Shenstone, Nr. Lichfield, West Midlands

Telephone: Shenstone 480633 Telex: 339478

A/B Norshen Shens

INDEX

	Page		Page
Accessories	29	Numerical Index	32
Air Cleaner	13	Pedal	7
Cables	21	Rear Number Plate Support	23
Carburettor	13	Rear Wheel Adjuster	27
Carrier	17	Seat	21
Chain	19	Service Tools	31
Control Levers	21	Silencer	21
Decals	19	Spark Plug	7
Electrical Equipment	23	Speedometer	23
Engine	7	Speedometer Gearbox	25
Filler Cap	17	Speedometer Drive Cable	23
Footboard	17	Stand	17
Fork - Front	19	Steering Head Bearings	19
Frame	17	Suspension Unit	17
Fuel Pressure Release Valve	17	Swinging Arm	17
Handlebars	21	Tail Light	23
Headlight	23	Tool Tray	21
Horn	23	Tyre	25/27
Lighting/Horn Switch	23	Wheel Front	25
Magneto	15	Wheel Rear	27
Mudguard	19		



IMPORTANT.

Please contact your retail dealer to obtain replacement parts.

Replacement parts or accessories must be approved by N.V.T. Motorcycles Ltd.

In this respect your attention is drawn to the terms and conditions of the guarantee a copy of which can be inspected at the premises of your dealer or distributor.

The information contained in this catalogue was correct and complete at the time of printing. Distributors will be informed of any subsequent alterations.

Engine and frame numbers must be quoted in full when ordering spare parts and in any correspondence relating to the machine. The engine number is located on the L.H. side of the engine, inboard of magneto cover joint. The frame number is located on L.H. engine plate below footboard.

Detailed information on dismantling and major overhauls will be found in the Workshop Manual available through your dealer.

LOCATING AND ORDERING PARTS.

An index is provided on page 2 to locate parts or group of parts.

Select the required component from the illustrations, note its reference number, and from the corresponding column on the opposite page, obtain correct name and part number.

OBTAINING PARTS.

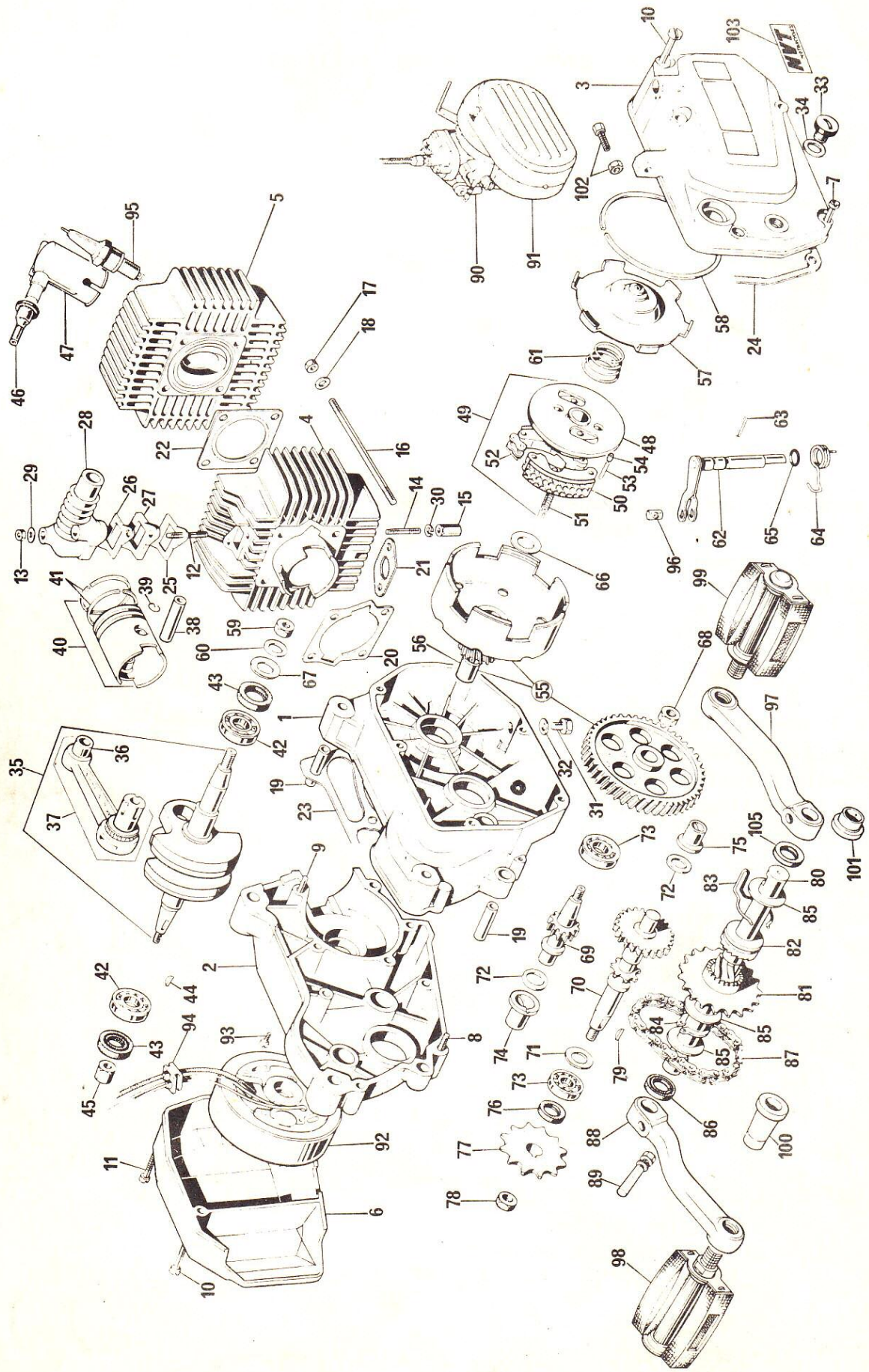
Spare parts are not supplied directly to private owners from the factory, but should be obtained through their dealer. Parts which have to be obtained specially, may incur an additional postage charge.

N.V.T. Motorcycles Ltd. reserves the right to vary the specification of all motorcycles and spare parts without notice and this information does not therefore constitute a term of any sale. All descriptions and claims are given and made in good faith but are intended to apply generally and variations in performance and construction of individual machines may occur. In particular, performance will be affected by conditions, circumstances and the rider.

* When ordering painted parts add a suffix to component part number depending upon colour.

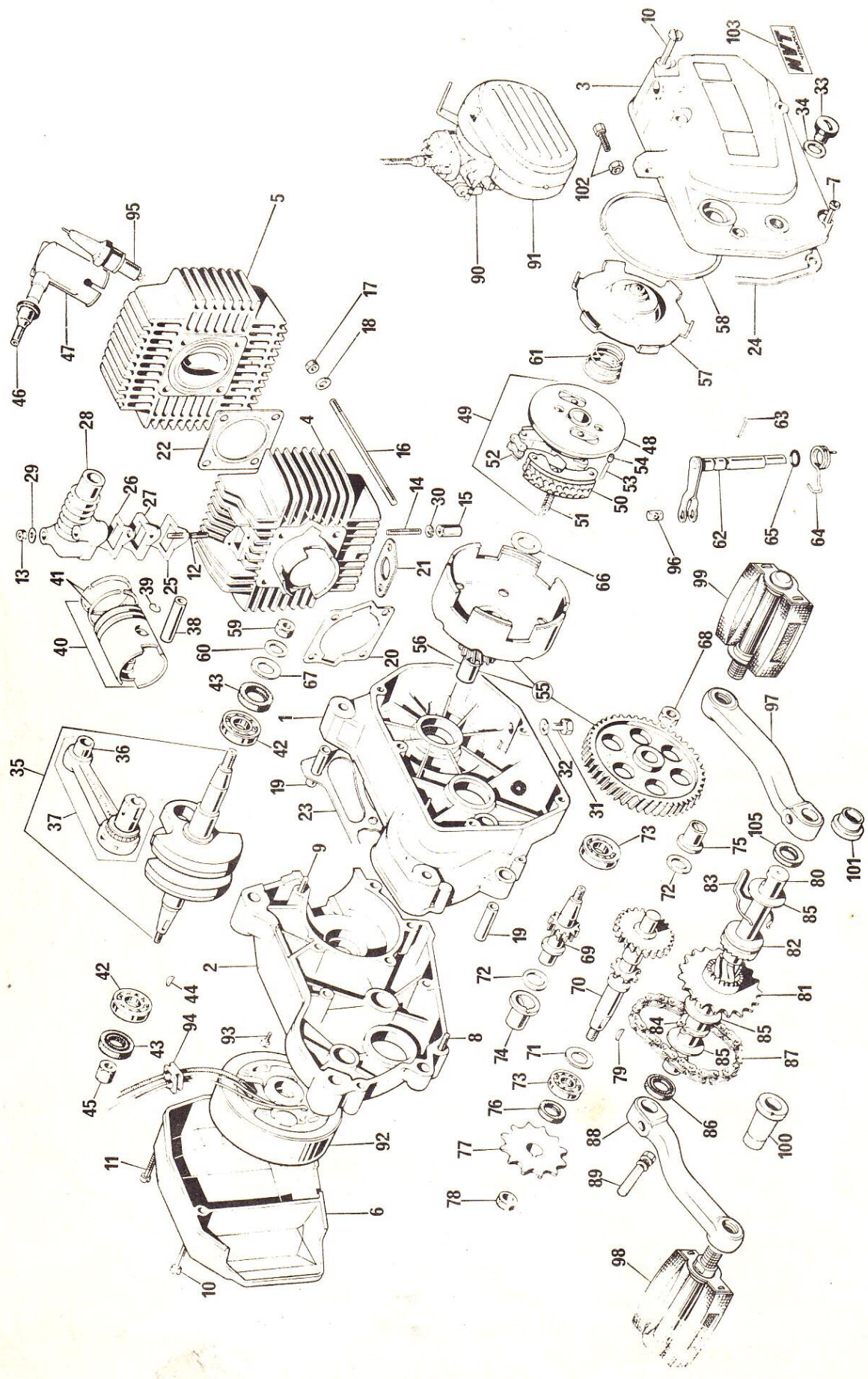
/06 For Yellow
/10 For Orange
/16 For Blue

EXAMPLE: Frame Part No. 09-0134
for a yellow machine, this
will become 09-0134/06.

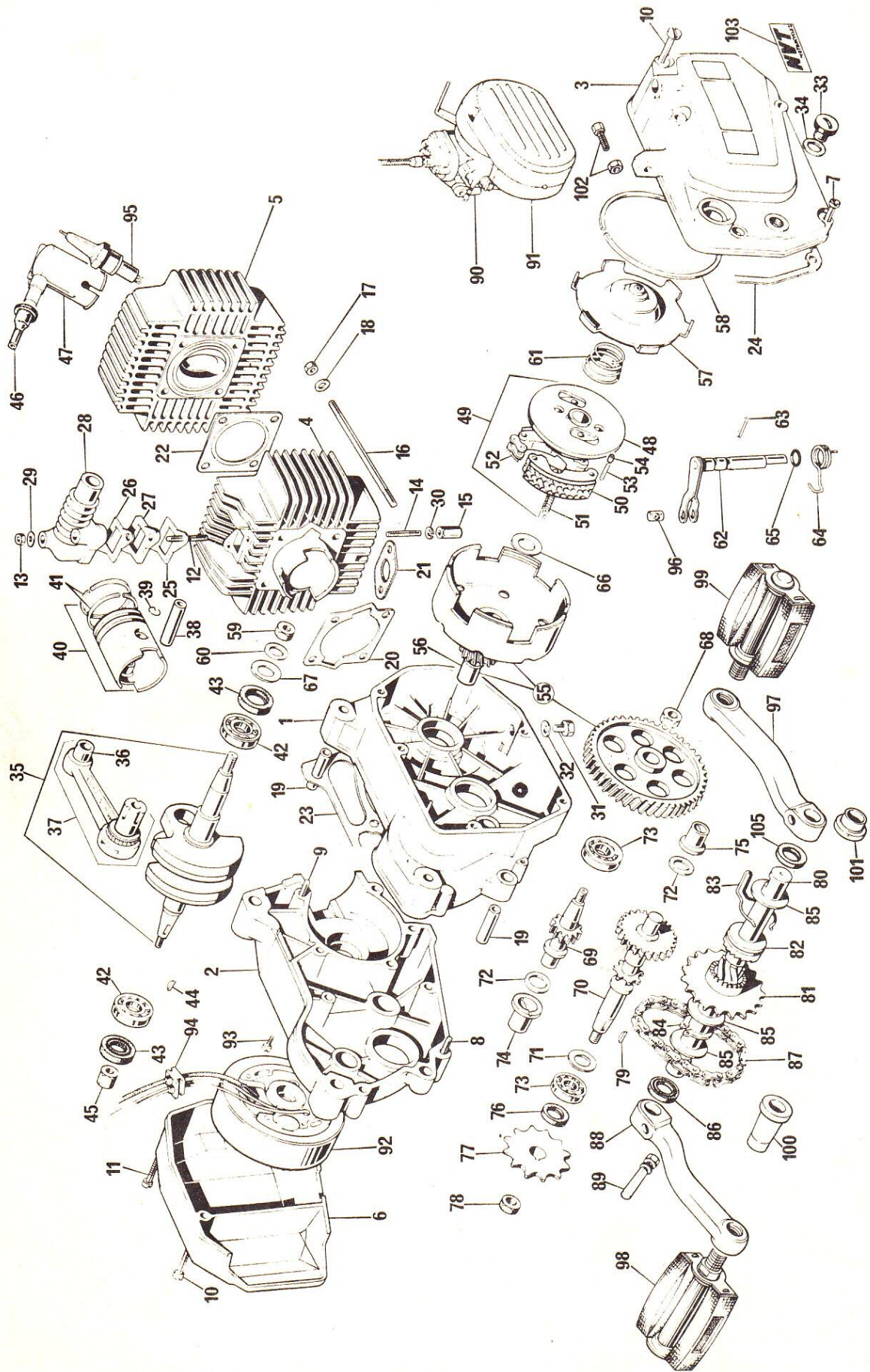


ENGINE

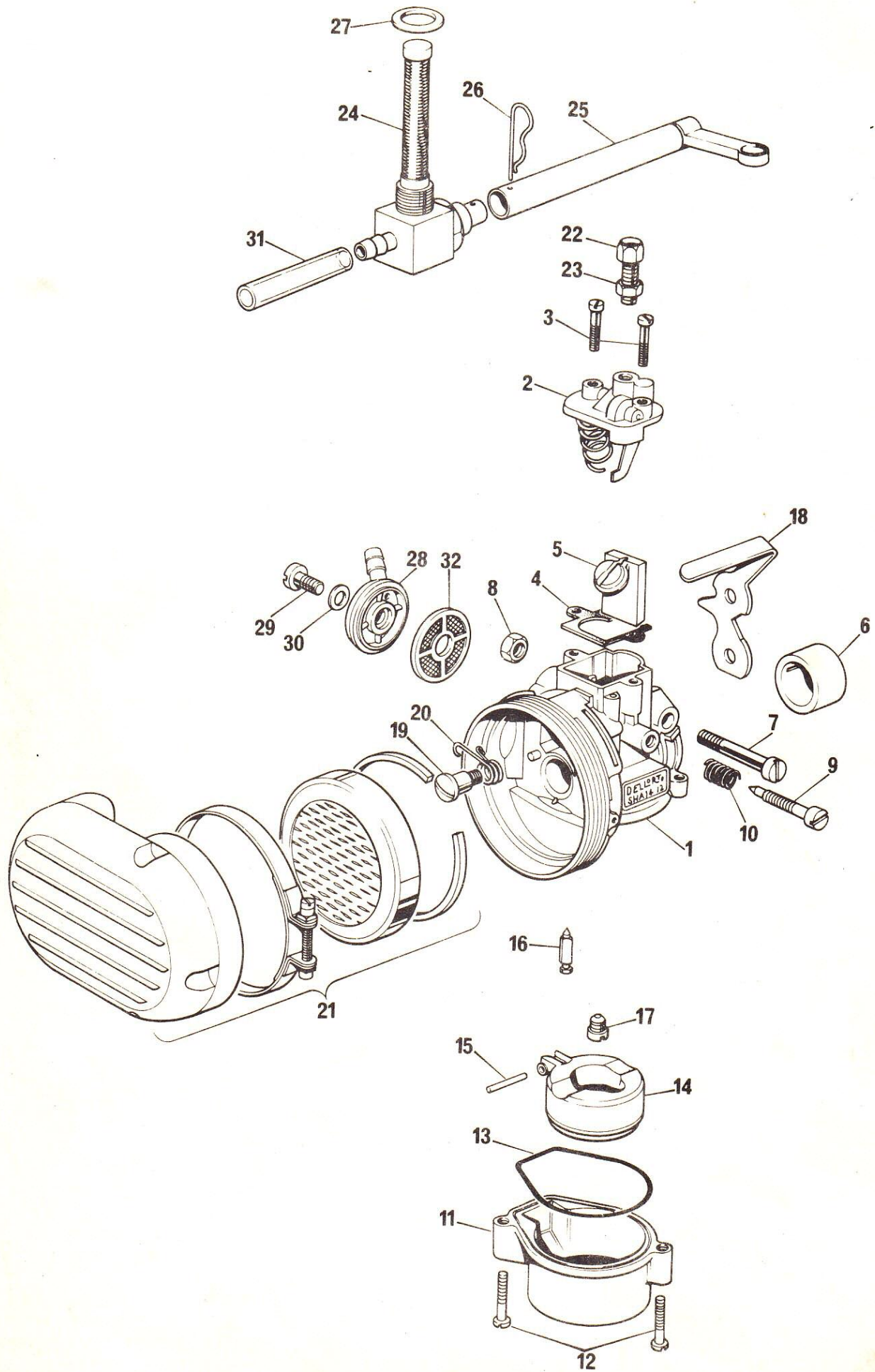
Ref. No.	Part No.	DESCRIPTION	Quantity
	09-0347	Engine complete	1
1	09-0001	R. H. crank case	1
2	09-0002	L. H. crank case	1
3	09-0003	R. H. side cover	1
4	09-0004	Cylinder	1
5	09-0005	Cylinder head	1
6	09-0006	L. H. side cover	1
7	09-0007	Screw 6 x 25 mm	2
8	09-0008	Screw 6 x 35 mm	1
9	09-0009	Screw 6 x 40 mm	8
10	09-0010	Screw 6 x 45 mm	5
11	09-0142	Screw 6 x 50 mm	1
12	09-0011	Stud, inlet pipe	2
13	23-2001/004	Nut 5 mm	2
14	09-0013	Stud, exhaust	2
15	09-0014	Nut 5 mm	2
16	09-0015	Stud, cylinder	4
17	23-2002/004	Nut 6 mm	4
18	23-1556/004	Washer, plain	4
19	09-0018	Dowel	3
20	09-0019	Gasket, cylinder base	1
21	09-0020	Gasket, exhaust flange	1
22	09-0021	Gasket, cylinder head	1
23	09-0022	Gasket, crankcase joint	1
24	09-0023	Gasket, R. H. side cover	1
25	09-0024	Gasket, lower, inlet pipe	1
26	09-0025	Gasket, upper, inlet pipe	1
	09-0372	Gasket set (spares pack)	1
27	09-0026	Distance piece	1
28	09-0027	Inlet pipe	1
29	23-1555/004	Washer	2
30	23-1604/004	Spring washer	2
31	09-0030	Drain plug	1
32	09-0031	Washer	1
33	09-0032	Level plug	1
34	09-0033	Washer	1
35	09-0034	Crankshaft assembly	1
36	09-0035	Small end bush	1
37	09-0036	Connecting rod C/W small end bush and big end bearing.	1
38	09-0037	Gudgeon pin	1
39	09-0038	Circlip	2
40	09-0039	Piston C/W rings	1
	09-0332	Piston C/W rings + .2mm O/S	1
	09-0345	Piston C/W rings + .4mm O/S	1
41	09-0040	Piston ring	2
	09-0333	Piston ring + .2mm O/S	2
	09-0346	Piston ring + .4mm O/S	2
42	09-0041	Bearing main	2



43	09-0042	Seal crankcase	2
	09-0371	Shaft seals (spares pack)	1
44	09-0043	Woodruff key	1
45	09-0044	Rotor nut	1
46	09-0045	Waterproof cover H.T. lead	1
47	09-0046	Cap, sparking plug (suppressed)	1
48	09-0047	Pivot plate, clutch	1
49	09-0048	Clutch shoe & plate assembly	1
50	09-0049	Clutch shoe C/W lining	2
51	09-0050	Spring, clutch	2
52	09-0051	Link, shoe retaining	2
53	09-0052	Pivot pin	4
54	09-0028	Pivot pin bush	4
55	09-0053	Transmission gear set with housing and bush.	1
56	09-0054	Clutch housing - bush	1
57	09-0055	Pressure plate	1
58	09-0056	Circlip	1
59	09-0057	Nut, crankshaft	1
60	23-1558/004	Washer, crankshaft	1
61	09-0059	Thrust spring	1
62	09-0060	Lever, clutch	1
63	09-0061	Roll pin	1
64	09-0062	Spring, clutch arm	1
65	09-0063	Ring, sealing	1
66	09-0064	Washer, housing	1
67	09-0064	Washer, packing	1
68	09-0057	Nut, transmission gear	1
	09-0066	Shaft & gear assembly, primary	1
69	09-0067	Shaft	1
70	09-0068	Shaft & gear assembly, secondary	1
71	09-0064	Washer, spacing (Ø.15)	1
72	09-0069	Washer, spacing (Ø.13)	2
73	09-0070	Bearing	2
74	09-0071	Bush	1
75	09-0072	Bush	1
76	09-0073	Oil seal	1
77	09-0074	Sprocket, final drive 13T	1
78	09-0075	Nut sprocket	1
79	09-0076	Woodruff key	1
80	09-0077	Shaft, pedal	1
81	09-0078	Sprocket. 19T pedal shaft	1
82	09-0079	Ratchet	1
83	09-0080	Spring, ratchet	1
84	09-0081	Circlip	1
85	09-0082	Washer, spacing	3
86	09-0083	Oil seal	2
87	09-0084	Chain (internal to pedal shaft)	1

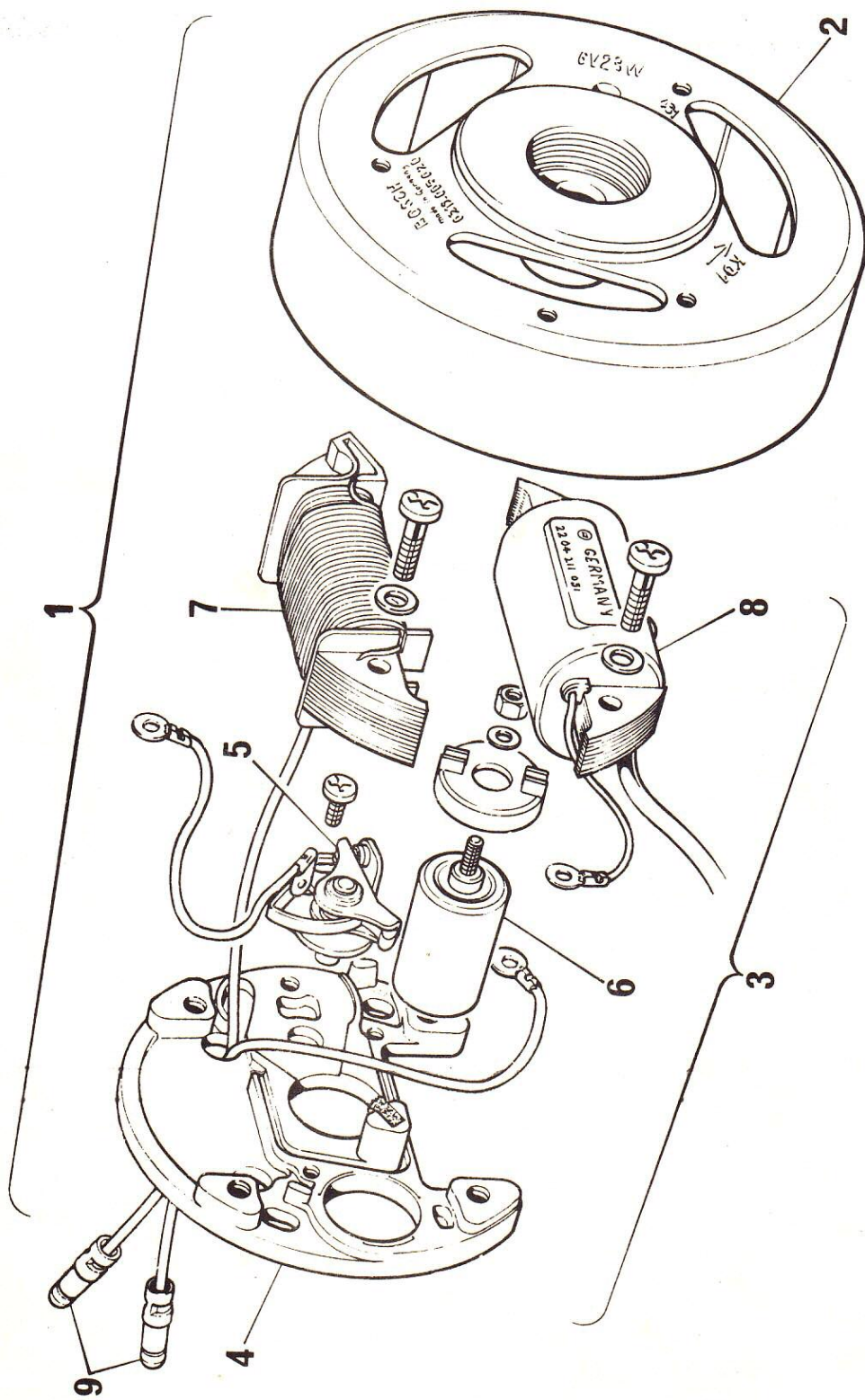


88	09-0085	L. H. crank (pedal)	1
89	09-0086	R. H. cotter pin, C/W nut & washer	2
90	09-0087	Carburettor (see page 13))	1
91	09-0121	Air cleaner (see page 13))	1
92	09-0089	Flywheel magneto 6v 23w (see page 15)	1
93	09-0090	Screw	2
94	09-0091	Grommet	1
95	09-0092	Sparking plug	1
96	09-0093	Nipple	1
97	09-0337	R. H. crank (pedal)	1
98	09-0281	Pedal L. H.	1
99	09-0338	Pedal R. H.	1
100	09-0285	Pedal shaft protection sleeve L. H.	1
101	09-0284	Pedal shaft protection sleeve R. H.	1
102	09-0291	Starting cable adjuster & nut	1
103	09-0383	Engine decal	2
	09-358	Pedal	1 pair
	09-359	Pedal Crank	1 pair



CARBURETTOR AND AIR CLEANER

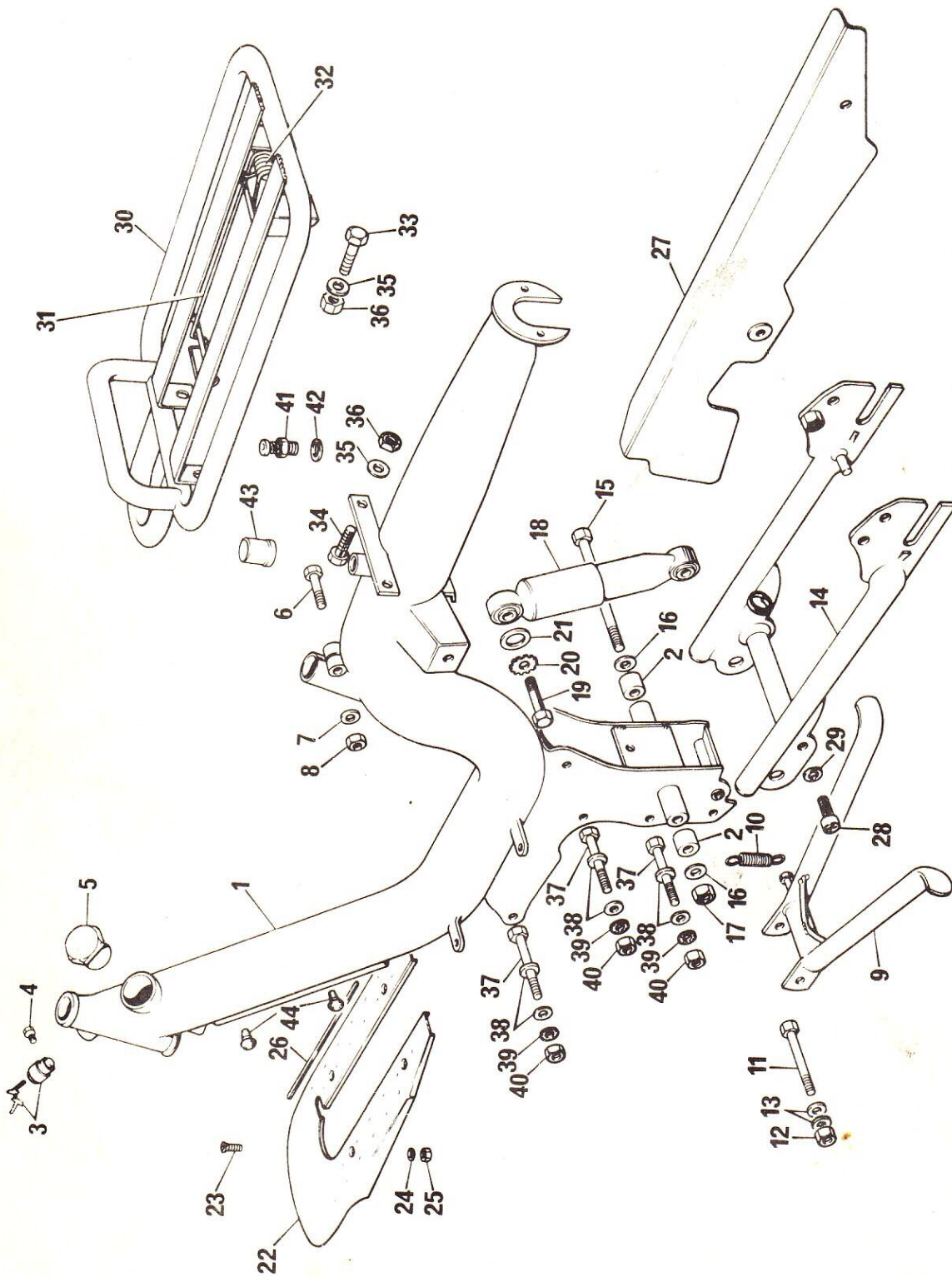
Ref No.	Part No.	DESCRIPTION	Quantity
1	09-0087	Carburettor complete	1
2	09-0095	Top	1
3	09-0096	Screw, top	2
4	09-0097	Gasket, top	1
5	09-0098	Slide, throttle	1
6	09-0103	Sleeve, insulating	1
7	09-0104	Screw, clamping	1
8	09-0105	Nut, clamping screw	1
9	09-0106	Screw, throttle stop	1
10	09-0107	Spring, throttle stop screw	1
11	09-0108	Float bowl	1
12	09-0109	Screw, float bowl	2
13	09-0110	Sealing ring, float bowl	1
14	09-0111	Float	1
15	09-0112	Pivot pin	1
16	09-0113	Needle, float	1
17	09-0116	Jet, main size 47.	1
18	09-0117	Lever, starting	1
19	09-0118	Screw, lever pivot	1
20	09-0119	Spring, lever	1
21	09-0121	Air cleaner complete	1
22	09-0124	Adjuster, throttle cable	1
23	09-0125	Nut, Cable adjuster	1
24	09-0126	Tap, fuel complete	1
25	09-0127	Lever, extension, tap	1
26	09-0128	Clip, securing	1
27	09-0129	Washer, sealing	1
28	09-0131	Banjo, carburettor filter	1
29	09-0132	Screw, banjo	1
30	09-0133	Washer, banjo	1
31	09-0130	Petrol pipe - 4½ cms long	1
32	09-0115	Banjo filter	1



FLYWHEEL MAGNETO

Ref. No.	Part No	DESCRIPTION	Quantity
1	09-0089	Magneto complete	1
2	09-0406	Magneto flywheel	1
3	09-0407	Magneto backplate complete	1
4	09-0408	Magneto backplate	1
5	09-0367	Contact points	1
6	09-0368	Condenser	1
7	09-0369	Lighting coil	1
8	⊗ 09-0370	Ignition coil	1
9	09-0339	Magneto lead bullet	2

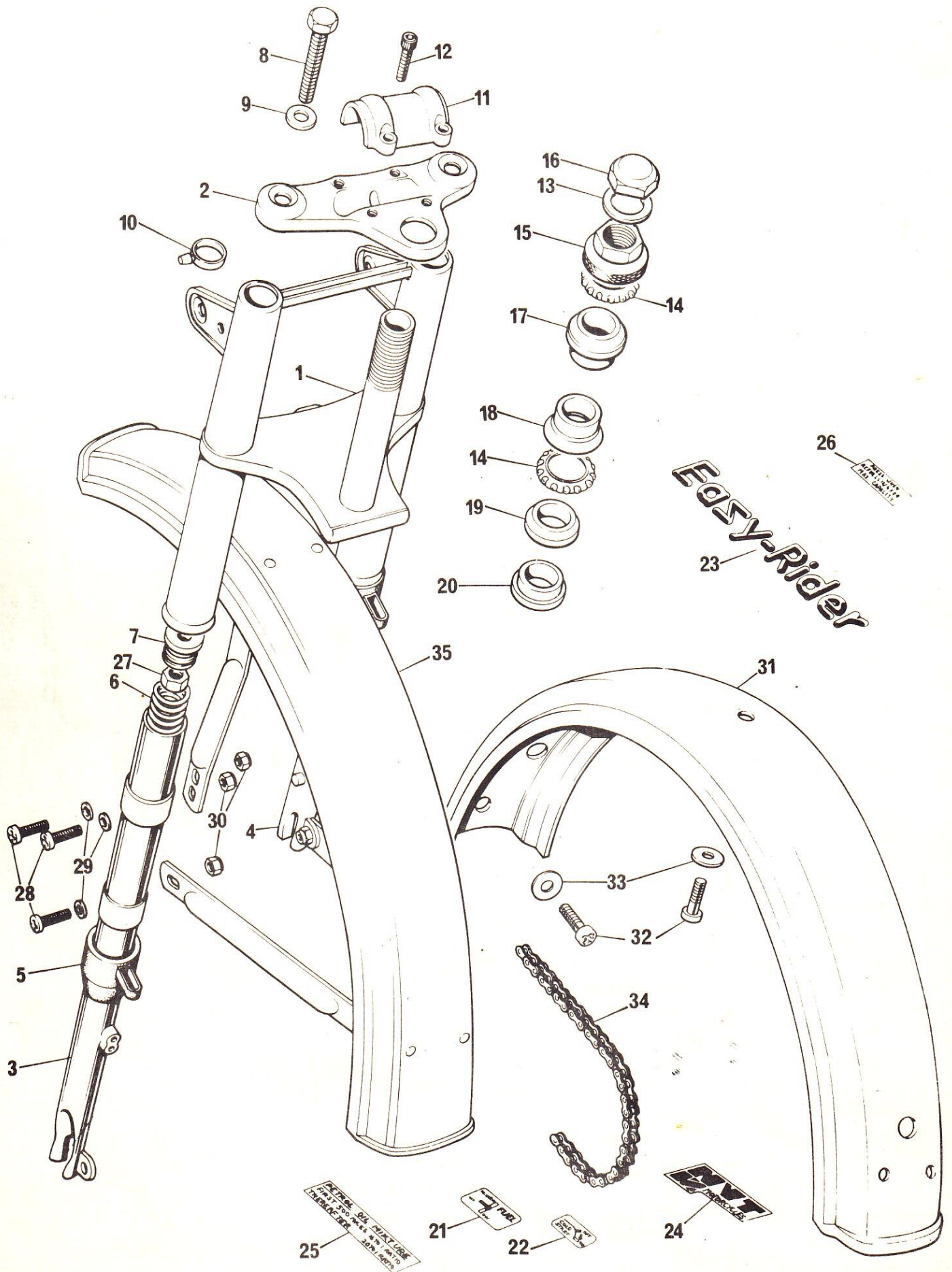
⊗ 09-0737 EXTERNAL HT COIL 1



FRAME, SWINGING ARM SUSPENSION UNITS, CARRIER STANDS
AND FOOTBOARD

Ref.No.	Part No.	DESCRIPTION	Quantity
1	* 09-0134	Frame less fittings	1
2	09-0135	Bush, swinging arm pivot	2
3	09-0136	Steering lock C/W keys	1
4	09-0137	Bolt, lock securing	1
5	09-0138	Cap, fuel filler	1
6	23-1142/004	Bolt, pillar	1
7	23-1557/004	Washer, pillar	1
8	23-2003/004	Nut pillar	1
9	* 09-0143	Stand, centre	1
10	09-0144	Spring, stand	1
11	09-0145	Bolt, stand	1
12	09-0146	Nut, stand	1
13	23-1558/004	Washer, stand	2
14	* 09-0148	Swinging arm	1
15	09-0149	Bolt	1
16	23-1559/004	Washer	2
17	09-0151	Nut	1
18	09-0152	Suspension unit	2
19	23-1040/004	Bolt suspension unit	4
20	09-0154	Serrated washer	4
21	23-1558/004	Plain washer	4
22	* 09-0156	Footboard	1
23	09-0157	Screw, crosshead, footboard	4
24	23-1556/004	Washer, footboard	4
25	23-2002/004	Nut, footboard	3
26	09-0160	Resilient strip, footboard	4
27	* 09-0336	Chainguard	1
28	09-0161	Screw, crosshead	1
29	23-1556/004	Chainguard washer	1
30	* 09-0334	Carrier complete	1
31	09-0353	Carrier strap	1
32	09-0354	Carrier spring	1
33	23-1032/004	Bolt, carrier 12mm long.	2
34	09-0162	Bolt, carrier 14mm long.	2
35	23-1556/004	Washer, carrier	4
36	23-2002/004	Nut, carrier	4
37	23-1150/004	Bolt, power unit	3
38	23-1557/004	Washer, plain	6
39	09-0167	Washer, serrated	3
40	23-2003/004	Nut	3
41	09-0169	Pressure release valve	1
42	09-0289	Pressure release valve washer	1
43	09-0170	Cover, pressure release valve	1
44	09-0141	Blanking plug legshield mounting	4

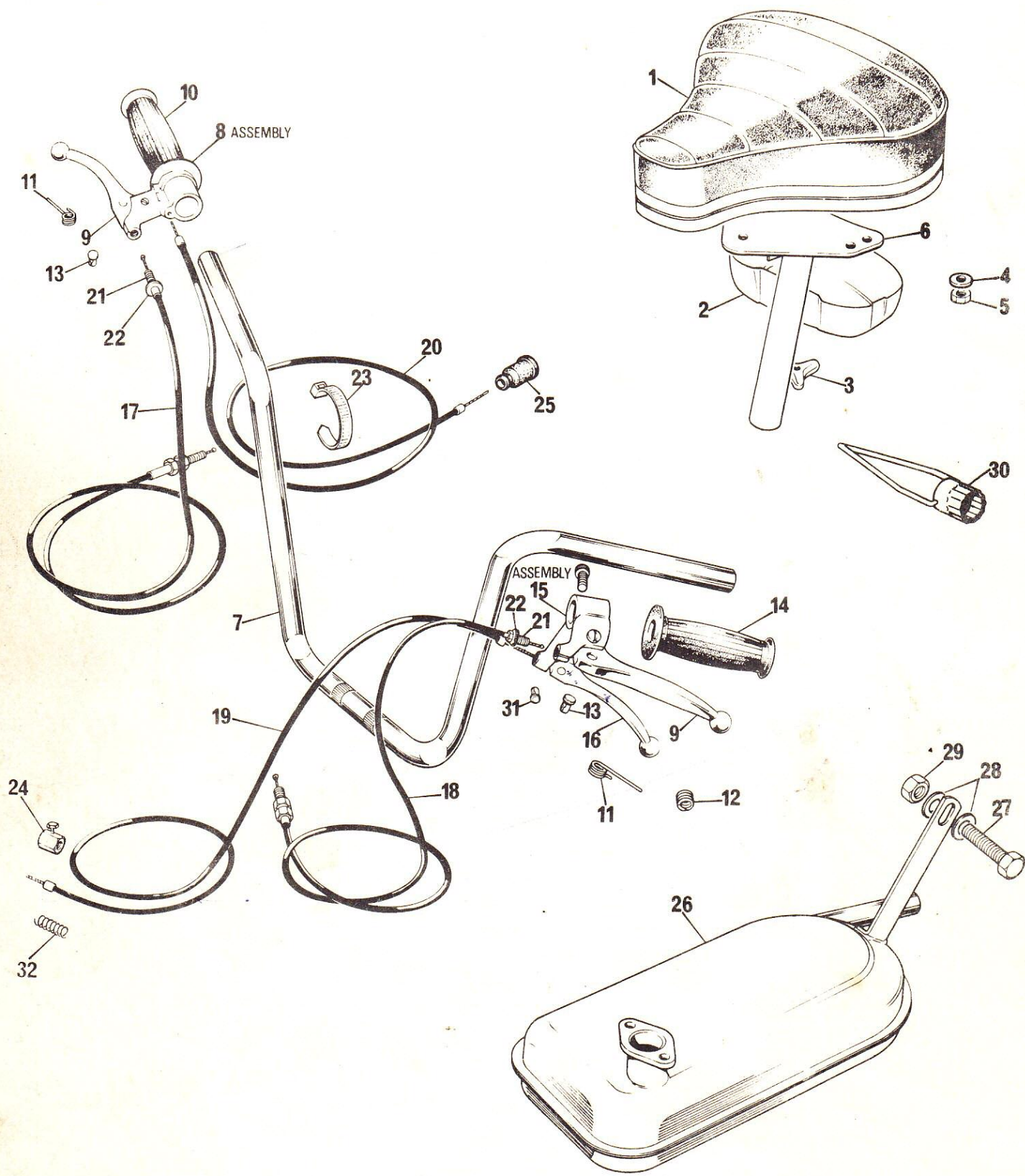
* See page 5 for ordering instructions
on painted parts.



FRONT FORKS, STEERING HEAD BEARINGS, MUDGUARDS
CHAIN AND DECALS

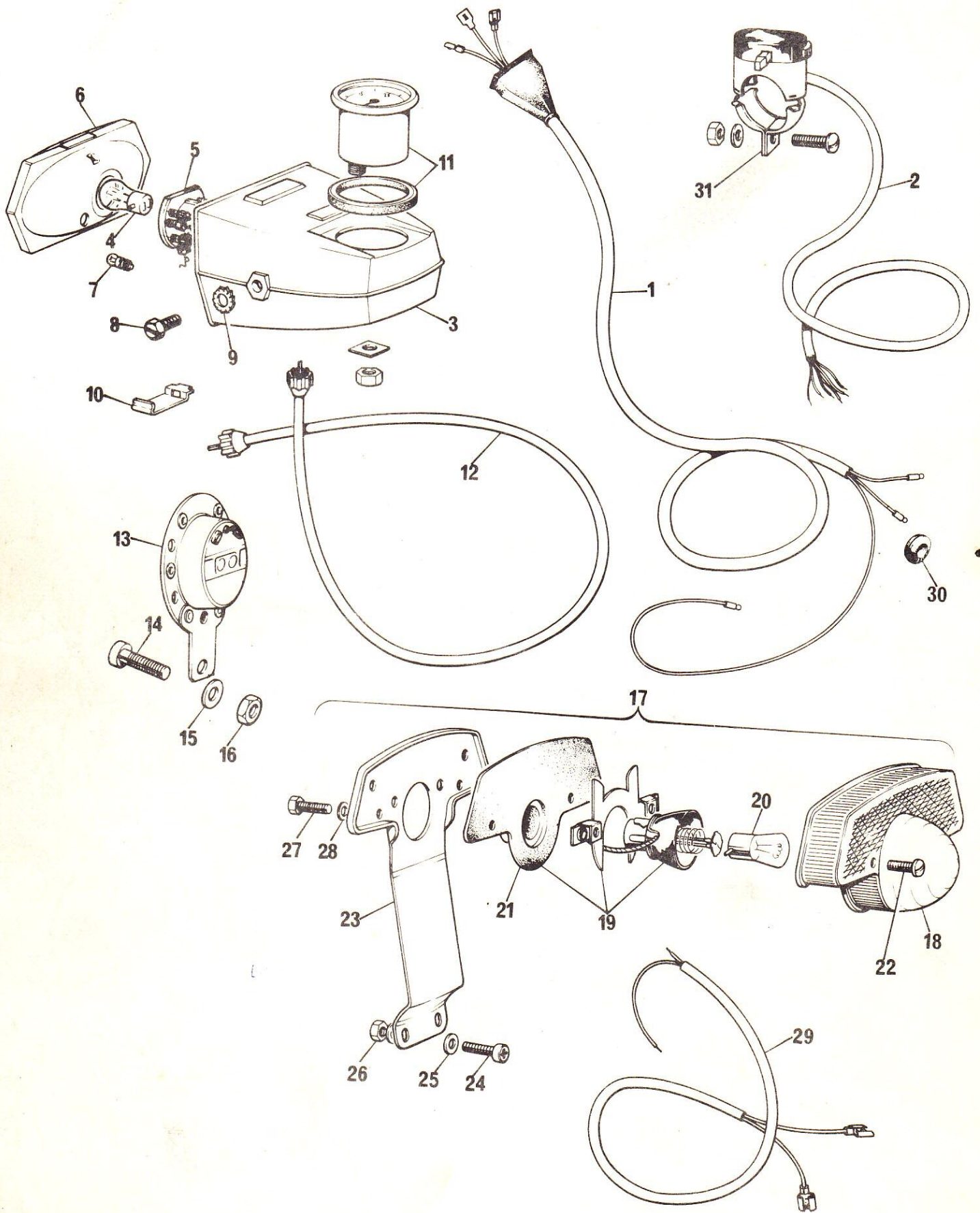
Ref. No.	Part No.	DESCRIPTION	Quantity
	* 09-0171	Fork Assembly	1
1	* 09-0172	Main tube and bottom yoke assembly.	1
2	* 09-0173	Top yoke	1
3	09-0174	Slider L. H.	1
4	09-0175	Slider R. H.	1
5	09-0176	Gaiter	2
6	09-0177	Spring	2
7	09-0178	Carrier, spring	2
8	23-1141/004	Bolt yoke	2
9	09-0180	Washer	2
10	09-0181	Guide, control cables	2
11	09-0182	Clamp, handlebar	1
12	09-0183	Socket screw, for clamp	4
	09-0184	Bearing & cup set	1
13	09-0185	Upper nut washer	1
14	09-0186	Ball bearing	2
15	09-0187	Upper nut and cup	1
16	09-0188	Upper nut	1
17	09-0349	Top frame cone	1
18	09-0350	Lower bearing cone	1
19	09-0351	Lower bearing	1
20	09-0190	Bearing shim collar	1
21	09-0199	Decal petrol tap	1
22	09-0202	Decal carburettor	1
23	09-0201	Decal "Easy Rider"(State colour read)	2
24	09-0200	Decal N.V.T. Motor Cycles Ltd.	1
25	09-0363	Decal petrol mix ratio	1
26	09-0207	Decal pressure release valve	1
27	23-2003/004	Nut for spring carrier	2
28	09-0161	Screw for front mudguard	6
29	23-1556/004	Washer for front mudguard	6
30	23-2002/004	Nut for front mudguard	6
31	* 09-0193	Mudguard - rear	1
32	09-0161	Screw for rear mudguard	2
33	23-1556/004	Washer for rear mudguard	2
34	09-0445	Chain	1
35	* 09-0189	Mudguard - front	1

* See page 5 for ordering instructions on painted parts.



SEAT, TOOL TRAY, HANDLEBARS, CONTROLS, CABLES AND SILENCER

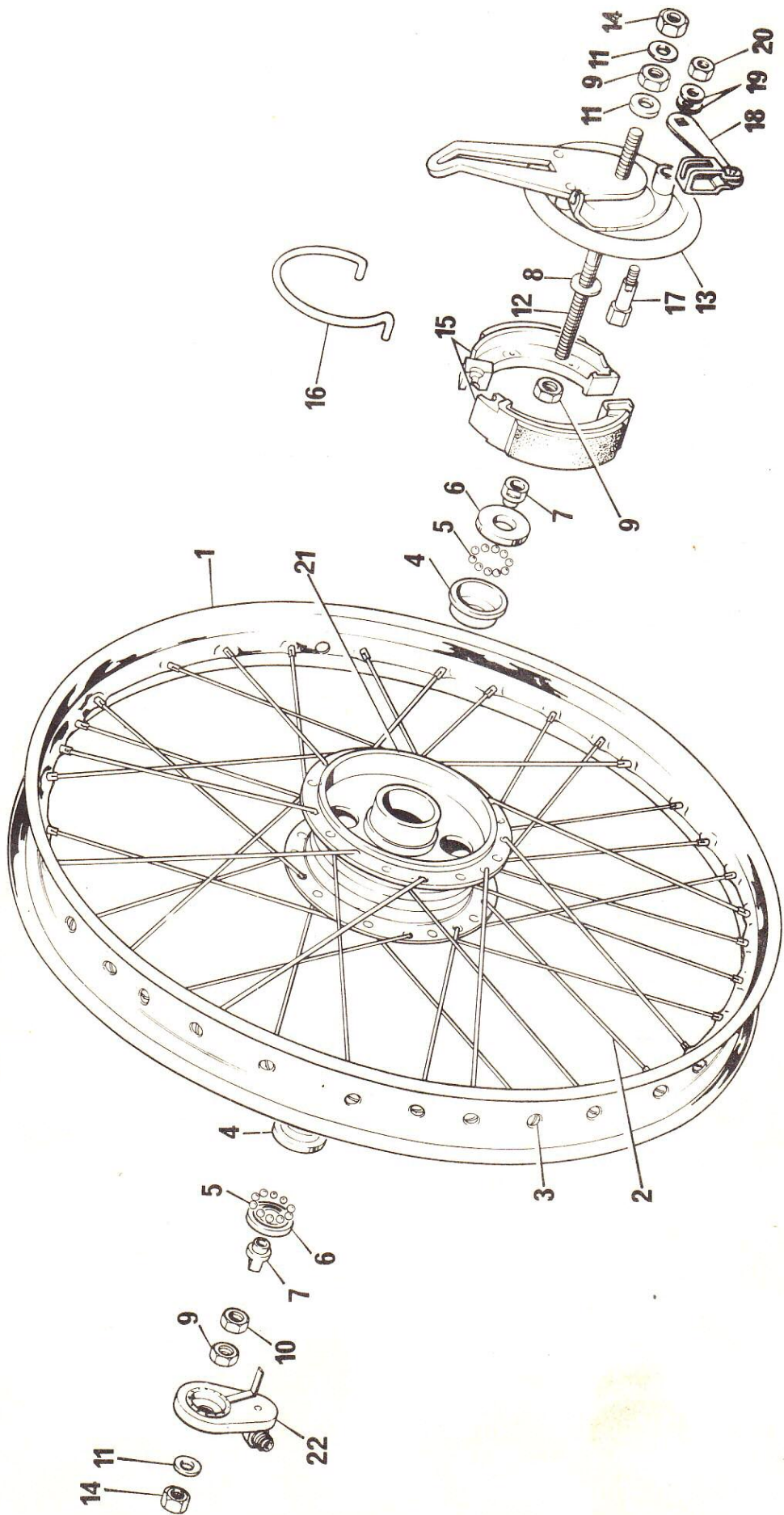
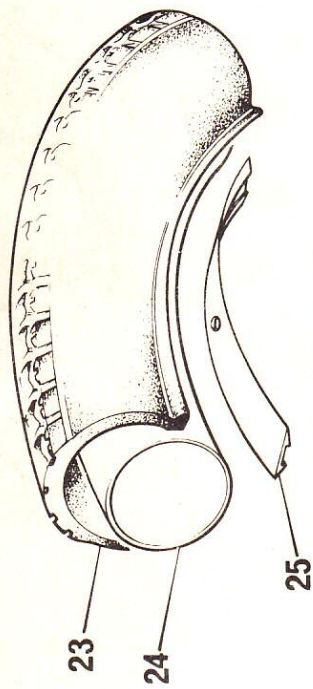
Ref. No.	Part No.	DESCRIPTION	Quantity
1	09-0238	Seat assy.	1
2	09-0239	Tool tray	1
3	09-0240	Knob tool tray	1
4	23-1556/004	Plain washer	3
5	23-2002/004	Nut	3
6	09-0139	Seat column	1
7	09-0244	Handlebar	1
8	09-0245	Twistgrip & brake lever assy.	1
9	09-0246	Lever, brake	2
10	09-0247	Grip only	1
11	09-0391	Control lever return spring	2
12	09-0392	Start lever spacer spring	1
13	09-0362	Cable trunnion - brake	2
14	09-0248	Dummy grip	1
15	09-0249	Brake & starting lever assy.	1
16	09-0250	Lever, starting	1
17	09-0251	Cable, front brake	1
18	09-0252	Cable, rear brake	1
19	09-0253	Cable, starting	1
20	09-0254	Cable, throttle	1
21	09-0394	Cable, adjuster	2
22	09-0395	Cable, adjuster locknut	2
23	09-0255	Tie, control cables	2
24	09-0290	Solderless nipple, starting cable	1
25	09-0114	Throttle cable boot	1
26	09-0256	Silencer	1
27	23-1040/004	Bolt, silencer fixing	1
28	23-1557/004	Washer, plain	2
29	23-2003/004	Nut	1
30	09-0257	Plug spanner	1
31	09-0396	Start cable trunnion	1
32	09-0393	Start cable return spring	1



ELECTRICAL EQUIPMENT, REAR NUMBER PLATE SUPPORT
AND SPEEDOMETER

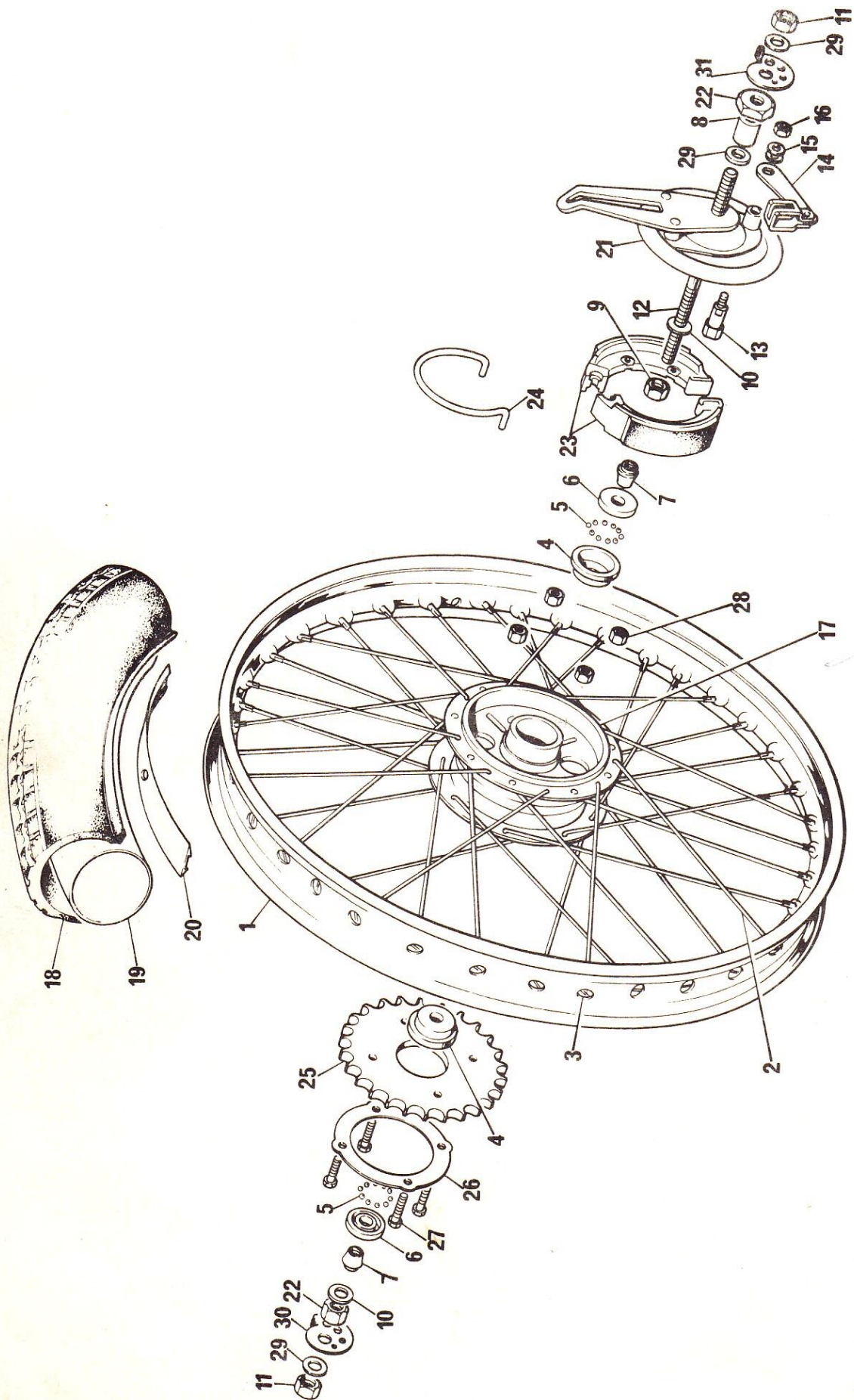
Ref.No.	Part No.	DESCRIPTION	Quantity
1	09-0258	Wiring harness, main	1
2	09-0259	Switch, lighting C/W wiring	1
3	09-0260	Headlamp shell <i>COMP</i>	1
4	09-0261	Bulb, main 6v 18/18w	1
5	09-0288	Light unit, bulb holder	1
6	09-0287	Light unit, headlamp	1
7	09-0262	Bulb, pilot	1
8	09-0263	Bolt, attachment	2
9	09-0267	Headlamp bolt washer	2
10	09-0264	Clip, light unit securing	1
11	09-0269	Speedometer head C/W seal and nut, 40 mph.	1
12	09-0270	Speedometer drive cable	1
13	09-0265	Horn	1
14	09-0161	Screw, horn	1
15	23-1556/004	Washer	1
16	23-2002/004	Nut, horn	1
17	09-0271	Tail lamp complete	1
18	09-0272	Lens tail	1
19	09-0273	Tail, bulbholder assy.	1
20	09-0274	Tail, bulb <i>6V 3" SMALL TYPE</i>	1
21	09-0275	Tail, rubber gasket	1
22	09-0276	Tail, screw lens	2
23	* 09-0277	Bracket, tail lamp/number plate	1
24	09-0161	Screw, bracket	4
25	23-1556/004	Washer, bracket	4
26	23-2002/004	Nut, bracket	2
27	09-0278	Tail light fixing screw	2
28	09-0279	Tail light fixing screw washer	2
29	09-0282	Harness, horn	1
30	09-0283	Grommet, tail lamp lead	2
31	09-0357	Lighting switch clip	1

* See page 5 for Ordering instructions
on painted parts.



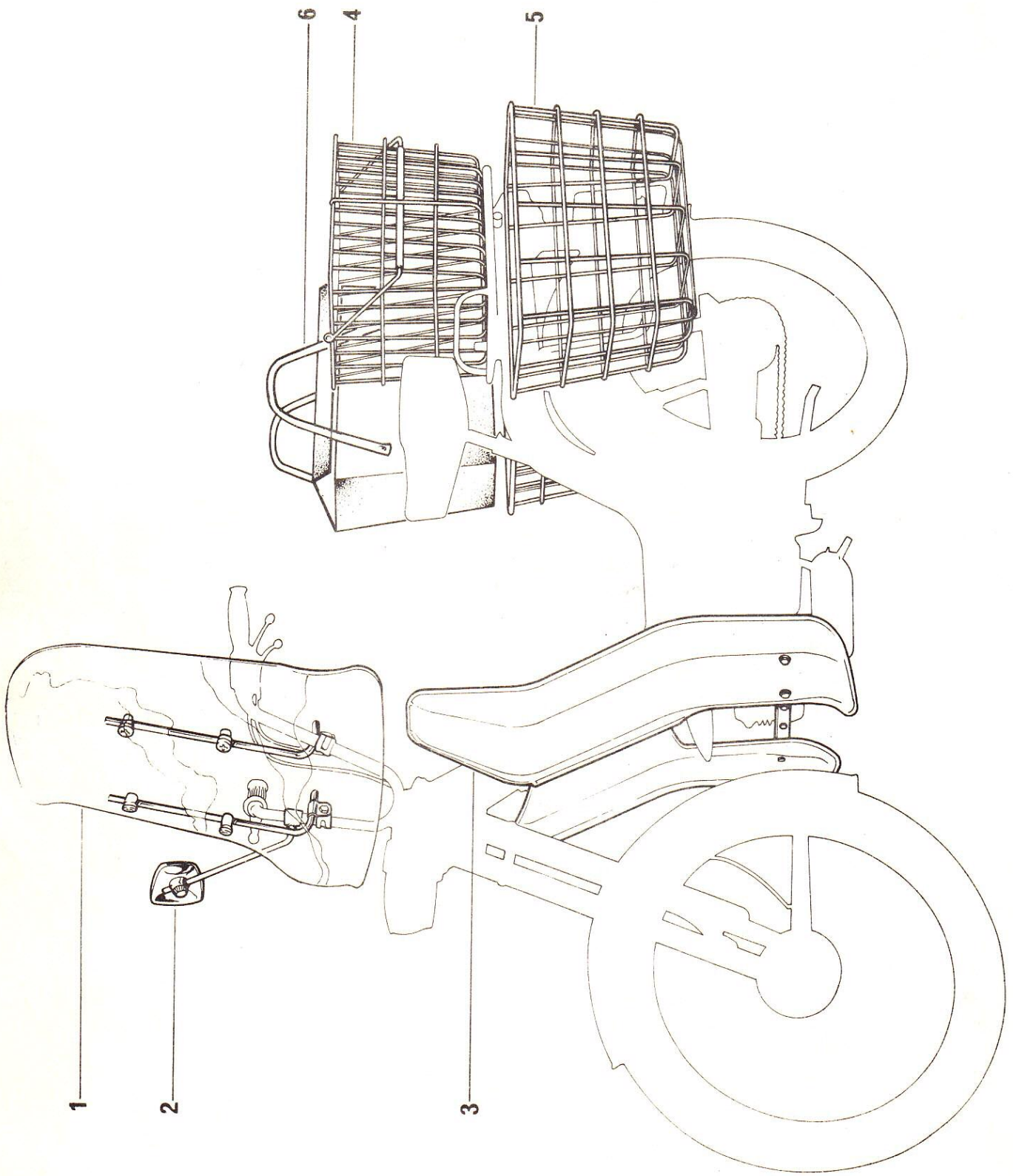
FRONT WHEEL

Ref.No.	Part No.	DESCRIPTION	Quantity
	09-0203	Wheel complete	1
	09-0204	Rim, hub, spokes assembled	1
1	09-0205	Rim	1
2	09-0206	Spoke	36
3	09-0230	Nipple	36
4	09-0208	Bearing cup	2
5	09-0209	1/4" ball	20
6	09-0210	Ball cover outer	2
7	09-0211	Cone	2
8	09-0212	Washer 1mm THK	1
9	09-0213	Nut, adjuster	3
10	09-0389	Nut, adjuster	1
11	09-0214	Washer	3
12	09-0215	Axle	1
13	09-0216	Brake plate	1
14	09-0233	Nut axle	2
15	09-0218	Shoe, brake C/W lining	2
16	09-0219	Spring, brake shoe	1
17	09-0220	Cam. brake operating	1
18	09-0221	Lever	1
19	09-0222	Washer	2
20	23-2002/004	Nut	1
21	09-0217	Hub	1
22	09-0226	Drive gearbox, speedometer	1
23	09-0342	Tyre	1
24	09-0343	Tube	1
25	09-0344	Rim band	1



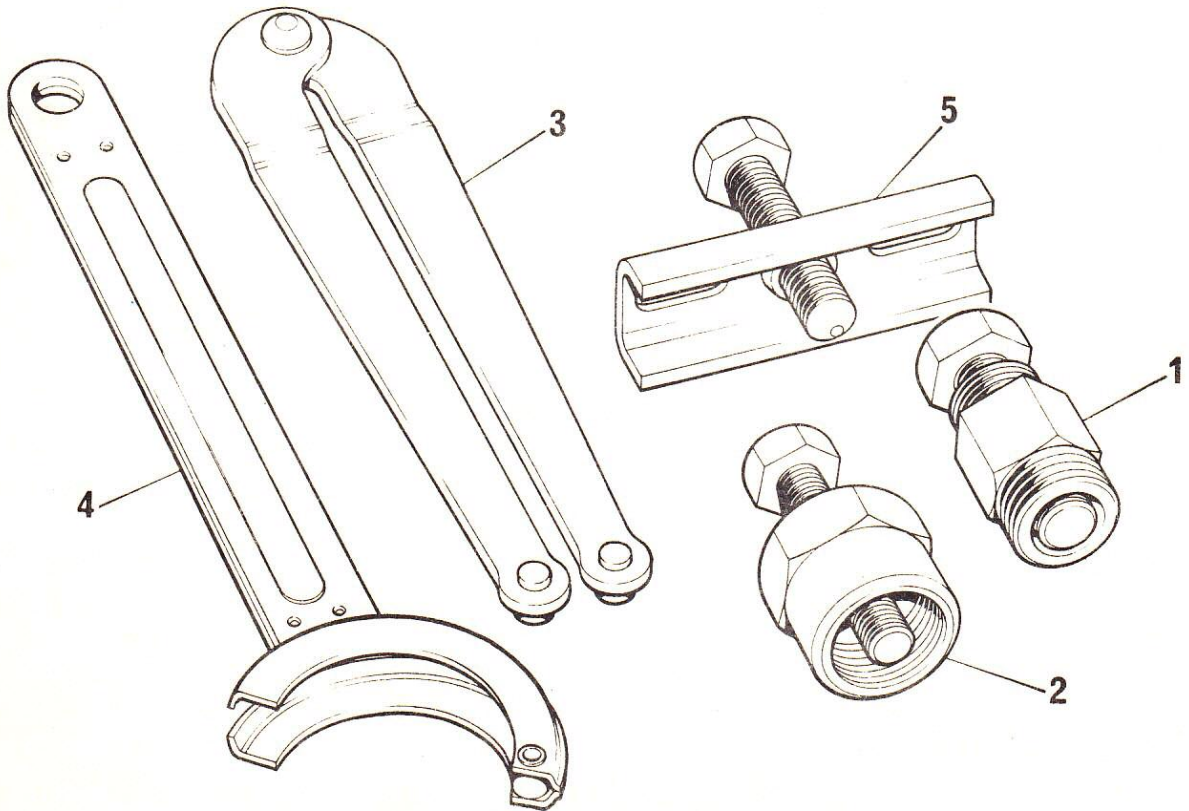
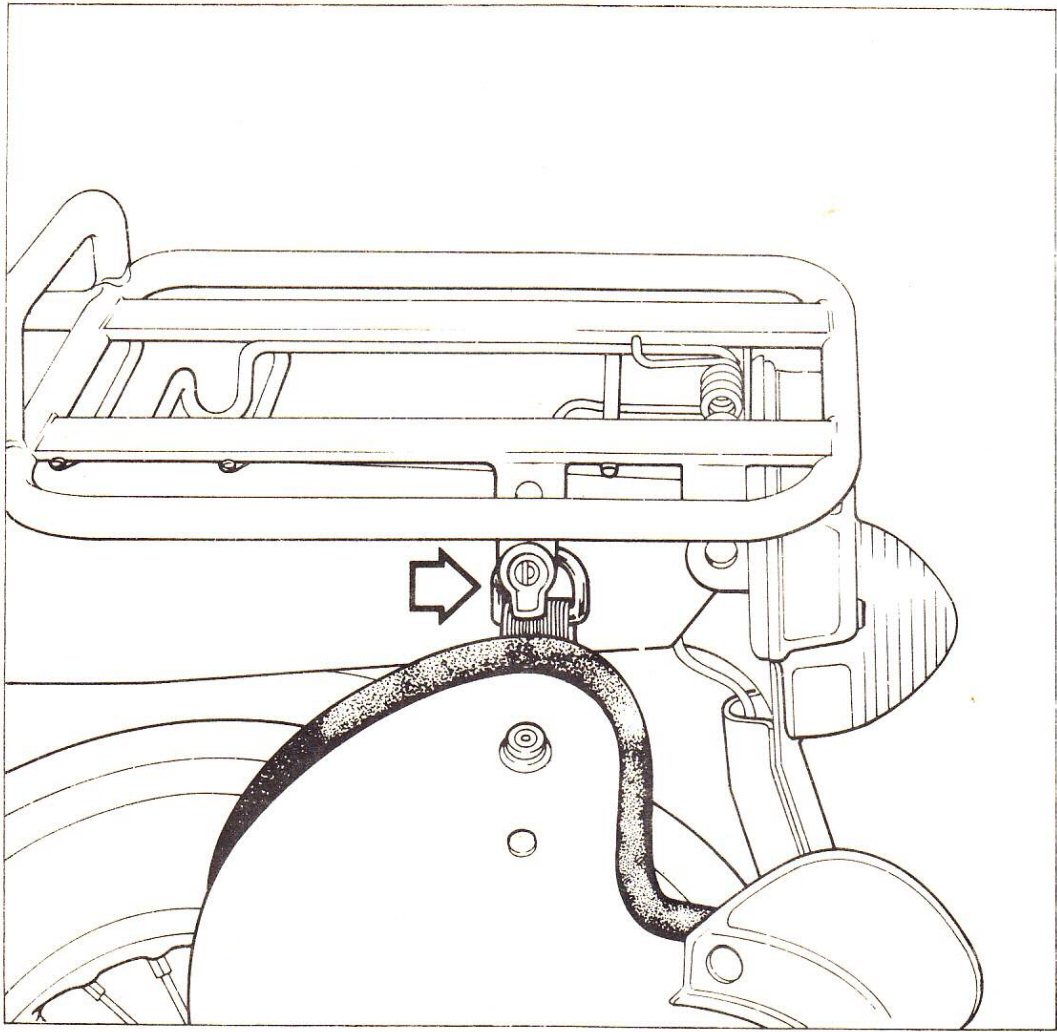
REAR WHEEL

Ref. No.	Part No.	DESCRIPTION	Quantity
	09-0227	Wheel complete	1
	09-0228	Rim, hub, spokes assembled	1
1	09-0205	Rim	1
2	09-0229	Spoke	36
3	09-0230	Nipple	36
4	09-0208	Bearing cup	2
5	09-0209	1/4" ball	20
6	09-0210	Ball cover outer	2
7	09-0211	Cone	2
8	09-0223	Spacer	1
9	09-0213	Nut adjuster	1
10	09-0212	Washer 1mm Thick	2
11	09-0233	Nut, axle	2
12	09-0387	Axle	1
13	09-0220	Cam brake operating	1
14	09-0388	Lever, brake operating	1
15	09-0222	Washer	2
16	23-2002/004	Nut	1
17	09-0390	Hub	1
18	09-0342	Tyre	1
19	09-0343	Tube	1
20	09-0344	Rim band	1
21	09-0231	Brake plate	1
22	09-0232	Nut	2
23	09-0218	Shoe, brake C/W lining	2
24	09-0219	Spring, brake shoe	1
25	09-0234	Sprocket rear - 30T	1
26	09-0235	Lockplate sprocket	1
27	09-0236	Bolt sprocket	4
28	09-0243	Nut sprocket	4
29	09-0214	Washer	3
30	09-0360	L.H. wheel adjuster	1
31	09-0366	R.H. wheel adjuster	1



ACCESSORIES

Ref No.	Part No.	DESCRIPTION	Quantity
1	09-0298	Windscreen complete	1
	09-0300	Windscreen blade	1
	09-0299	Windscreen stay	2
	08-1340	Stay end cap	4
	08-1297	Nylon eye bolt	4
	08-1298	Nylon distance piece	4
	76-1018	Nylon screw	4
	08-1018	Clip	2
	08-1204	Clip	2
	68-8059	Distance piece	2
	23-1606/004	Spring washer	2
	23-1145/004	Bolt	2
	23-2003/004	Nut	2
	2	09-0319	Mirror complete
09-0320		Mirror head assembly	1
3	09-0308	Legshield complete	1
	09-0309	Legshield L. H.	1
	09-0310	Legshield R. H.	1
	09-0314	Legshield stay	1
	09-0315	Stay/cylinder head nut	2
	09-0162	Stay/cylinder head bolt	2
	23-1556/004	Stay/cylinder head bolt washer	2
	09-0162	Stay bolt	2
	23-1556/004	Stay bolt washer	2
	09-0378	Stay bolt washer large	2
	23-2002/004	Stay bolt nut	2
	09-0313	Legshield blade screw	4
	23-1554/004	Legshield blade screw washer	4
	09-0311	Legshield blade fastener	4
4	09-0324	Carrier basket complete	1
5	09-0452	Panniers complete	1
	09-0453	Pannier basket	2
	09-0455	Basket rear support bracket L. H.	1
	09-0463	Basket rear support bracket R. H.	1
	09-0456	Basket rear support rod	1
	09-0457	Basket top bracket	2
	09-0458	Basket bottom bracket	2
	23-2002/004	Rear support rod nut	4
	23-1556/004	Rear support rod washer	2
	09-0161	Basket Screw	6
	23-1556/004	Basket washer	12
	23-2002/004	Basket nut	6
6	09-0454	Pannier bag	2



ACCESSORIES

Ref. No.	Part No.	DESCRIPTION	Quantity
	09-0327	Helmet lock	1

ENGINE SERVICE TOOLS

Ref No.	Part No.	DESCRIPTION	Quantity
1	09-0292	Magneto extractor	1
2	09-0293	Sprocket extractor	1
3	09-0294	Magneto & clutch spanner	1
4	09-0295	Sprocket spanner	1
5	09-0296	Clutch & transmission gear extractor.	1

NUMERICAL INDEX

Spares Number	Page Number	Ref Number	Quantity	Spares Number	Page Number	Ref Number	Quantity
08-1018	29	-	2	09-0049	8	50	2
08-1204	29	-	2	050	8	51	2
08-0197	29	-	4	051	8	52	2
08-1298	29	-	4	052	8	53	4
08-1340	29	-	4	053	8	55	1
09-0001	3	1	1	054	8	56	1
002	3	2	1	055	8	57	1
003	3	3	1	056	8	58	1
004	3	4	1	057	8	59	1
005	3	5	1	057	8	68	1
006	3	6	1	059	8	61	1
007	3	7	2	060	8	62	1
008	3	8	1	061	8	63	1
009	3	9	8	062	8	64	1
010	3	10	5	063	8	65	1
011	3	12	2	064	8	66	1
013	3	14	2	064	8	67	1
014	3	15	2	064	8	71	1
015	3	16	4	066	9	-	1
018	3	19	3	067	8	69	1
019	3	20	1	068	8	70	1
020	3	21	1	069	8	72	2
021	3	22	1	070	8	73	2
022	3	23	1	071	8	74	1
023	3	24	1	072	8	75	1
024	3	25	1	073	8	76	1
025	3	26	1	074	8	77	1
026	3	27	1	075	8	78	1
027	3	28	1	076	8	79	1
028	8	54	4	077	8	80	1
030	3	31	1	078	8	81	1
031	3	32	1	079	8	82	1
032	3	33	1	080	8	83	1
033	3	34	1	081	8	84	1
034	3	35	1	082	8	85	3
035	3	36	1	083	8	86	2
036	3	37	1	084	8	87	1
037	3	38	1	085	10	88	1
038	3	39	2	086	10	89	2
039	3	40	1	087	10	90	1
040	3	41	2	087	13	-	1
041	3	42	2	089	10	92	1
042	8	43	2	089	14	1	1
043	8	44	1	090	10	93	2
044	8	45	1	091	10	94	1
045	8	46	1	092	10	95	1
046	8	47	1	093	10	96	1
047	8	48	1	095	12	2	1
048	8	49	1	096	12	3	2
				097	12	4	1
				098	12	5	1
				103	12	6	1

Spares Number	Page Number	Ref Number	Quantity	Spares Number	Page Number	Ref Number	Quantity
09-0104	12	7	1	09-0161	29	-	6
105	12	8	1	162	16	34	2
106	12	9	1	162	29	-	2
107	12	10	1	162	29	-	2
108	12	11	1	167	16	39	3
109	12	12	2	169	16	41	1
110	12	13	1	170	16	43	1
111	12	14	1	171	19	-	1
112	12	15	1	172	18	1	1
113	12	16	1	173	18	2	1
114	20	25	1	174	18	3	1
115	12	32	1	175	18	4	1
116	12	17	1	176	18	5	2
117	12	18	1	177	18	6	2
118	12	19	1	178	18	7	2
119	12	20	1	180	18	9	2
121	10	91	1	181	18	10	2
121	12	21	1	182	18	11	1
124	12	22	1	183	18	12	4
125	12	23	1	184	19	-	1
126	12	24	1	185	18	13	1
127	12	25	1	186	18	14	2
128	12	26	1	187	18	15	1
129	12	27	1	188	18	16	1
130	12	31	1	189	18	35	1
131	12	28	1	190	18	20	1
132	12	29	1	193	18	31	1
133	12	30	1	199	18	21	1
134	16	1	1	200	18	24	1
135	16	2	2	201	18	23	2
136	16	3	1	202	18	22	1
137	16	4	1	203	25	-	1
138	16	5	1	204	25	-	1
139	20	6	1	205	24	1	1
141	16	44	4	205	26	1	1
142	6	11	1	206	24	2	36
143	16	9	1	207	18	26	1
144	16	10	1	208	24	4	2
145	16	11	1	208	26	4	2
146	16	12	1	209	24	5	20
148	16	14	1	209	26	5	20
149	16	15	1	210	24	6	2
151	16	17	1	210	26	6	2
152	16	18	2	211	24	7	2
154	16	20	4	211	26	7	2
156	16	22	1	212	24	8	1
157	16	23	4	212	26	10	2
160	16	26	4	213	24	9	3
161	16	28	1	213	26	9	1
161	18	28	6	214	24	11	3
161	18	32	2	214	26	29	3
161	22	14	1	215	24	12	1
161	22	24	4				

Spares Number	Page Number	Ref Number	Quantity
09-0210	24	13	1
217	24	21	1
218	24	15	2
218	26	23	2
219	24	16	1
219	16	24	1
220	24	17	1
220	26	13	1
221	24	18	1
222	24	19	2
222	26	15	2
223	26	8	1
226	24	22	1
227	27	-	1
228	27	-	1
229	26	2	36
230	24	3	36
230	26	3	36
231	26	21	1
232	26	22	2
233	24	14	2
233	26	11	2
234	26	25	1
235	26	26	1
236	26	27	4
238	20	1	1
239	20	2	1
240	20	3	1
243	26	28	4
244	20	7	1
245	20	8	1
246	20	9	2
247	20	10	1
248	20	14	1
249	20	15	1
250	20	16	1
251	20	17	1
252	20	18	1
253	20	19	1
254	20	20	1
255	20	23	2
256	20	26	1
257	20	30	1
258	22	1	1
259	22	2	1
260	22	3	1
261	22	4	1
262	22	7	1
263	22	8	2
264	22	10	1
265	22	13	1
267	22	9	2

Spares Number	Page Number	Ref Number	Quantity
09-0269	22	11	1
270	22	12	1
271	22	17	1
272	22	18	1
273	22	19	1
274	22	20	1
275	22	21	1
276	22	22	2
277	22	23	1
278	22	27	2
279	22	28	2
281	10	98	1
282	22	29	1
283	22	30	2
284	10	101	1
285	10	100	1
287	22	6	1
288	22	5	1
289	16	42	1
290	20	24	1
291	10	102	1
292	30	1	1
293	30	2	1
294	30	3	1
295	30	4	1
296	30	5	1
298	28	1	1
299	29	-	2
300	29	-	1
308	28	3	1
309	29	-	1
310	29	-	1
311	29	-	4
313	29	-	4
314	29	-	1
315	29	-	2
319	28	2	1
320	29	-	1
324	28	4	1
327	31	-	1
332	7	-	1
333	7	-	2
334	16	30	1
336	16	27	1
337	10	97	1
338	10	99	1
339	14	9	2
342	24	23	1
342	26	18	1
343	24	24	1
343	26	19	1
344	24	25	1

Spares Number	Page Number	Ref Number	Quantity	Spares Number	Page Number	Ref Number	Quantity
09-0344	26	20	1	09-0463	29	-	1
345	7	-	1	68-8059	29	-	2
346	7	-	2	76-1018	29	-	4
347	7	-	1	23-1032/004	16	33	2
349	18	17	1	23-1040/004	16	19	4
350	18	18	1	23-1040/004	20	27	1
351	18	19	1	23-1141/004	18	8	2
353	16	31	1	23-1142/004	16	6	1
354	16	32	1	23-1145/004	29	-	2
357	22	31	1	23-1550/004	16	37	3
358	11	-	1 pr.	23-1554/004	29	-	4
359	11	-	1 pr.	23-1555/004	6	29	2
360	26	30	1	23-1556/004	6	18	4
362	20	13	2	23-1556/004	16	24	4
363	18	25	1	23-1556/004	16	29	1
366	26	31	1	23-1556/004	16	35	4
367	14	5	1	23-1556/004	18	29	6
368	14	6	1	23-1556/004	18	33	2
369	14	7	1	23-1556/004	20	4	3
370	14	8	1	23-1556/004	22	15	1
371	9	-	1	23-1556/004	22	25	4
372	7	-	1	23-1556/004	29	-	2
378	29	-	2	23-1556/004	29	-	2
383	10	103	2	23-1556/004	29	-	2
387	26	12	1	23-1556/004	29	-	12
388	26	14	1	23-1557/004	16	7	1
389	24	10	1	23-1557/004	16	38	6
390	26	17	1	23-1557/004	20	28	2
391	20	11	2	23-1558/004	8	60	1
392	20	12	1	23-1558/004	16	13	2
393	20	32	1	23-1558/004	16	21	4
394	20	21	2	23-1559/004	16	16	2
395	20	22	2	23-1604/004	6	30	2
396	20	31	1	23-1606/004	29	-	2
406	14	2	1	23-2001/004	6	13	2
407	14	3	1	23-2002/004	6	17	4
408	14	4	1	23-2002/004	16	25	3
445	18	34	1	23-2002/004	16	36	4
452	28	5	1	23-2002/004	18	30	6
453	29	-	2	23-2002/004	20	25	3
454	29	-	2	23-2002/004	22	16	1
455	29	-	1	23-2002/004	22	26	2
456	29	-	1	23-2002/004	24	20	1
457	29	-	2	23-2002/004	26	16	1
458	29	-	2	23-2002/004	29	-	4
				23-2002/004	29	-	4
				23-2002/004	29	-	6
				23-2003/004	16	8	1
				23-2003/004	16	40	3
				23-2003/004	18	27	2
				23-2003/004	20	29	1
				23-2003/004	29	-	2

