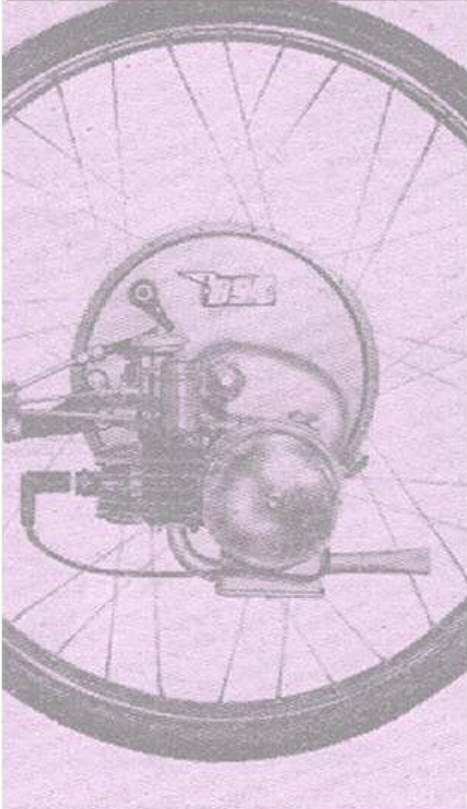
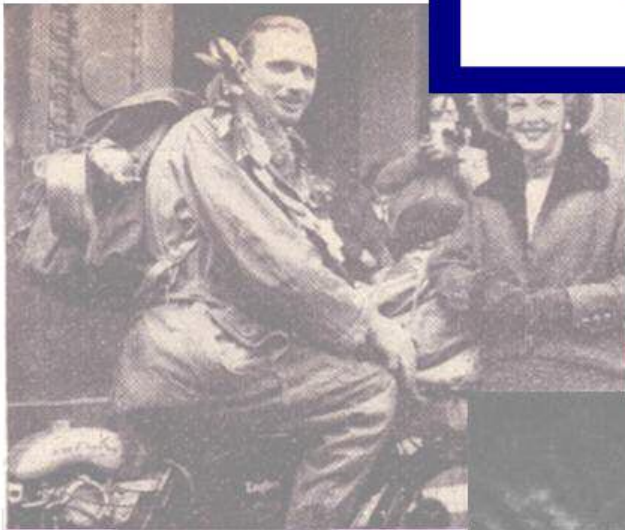
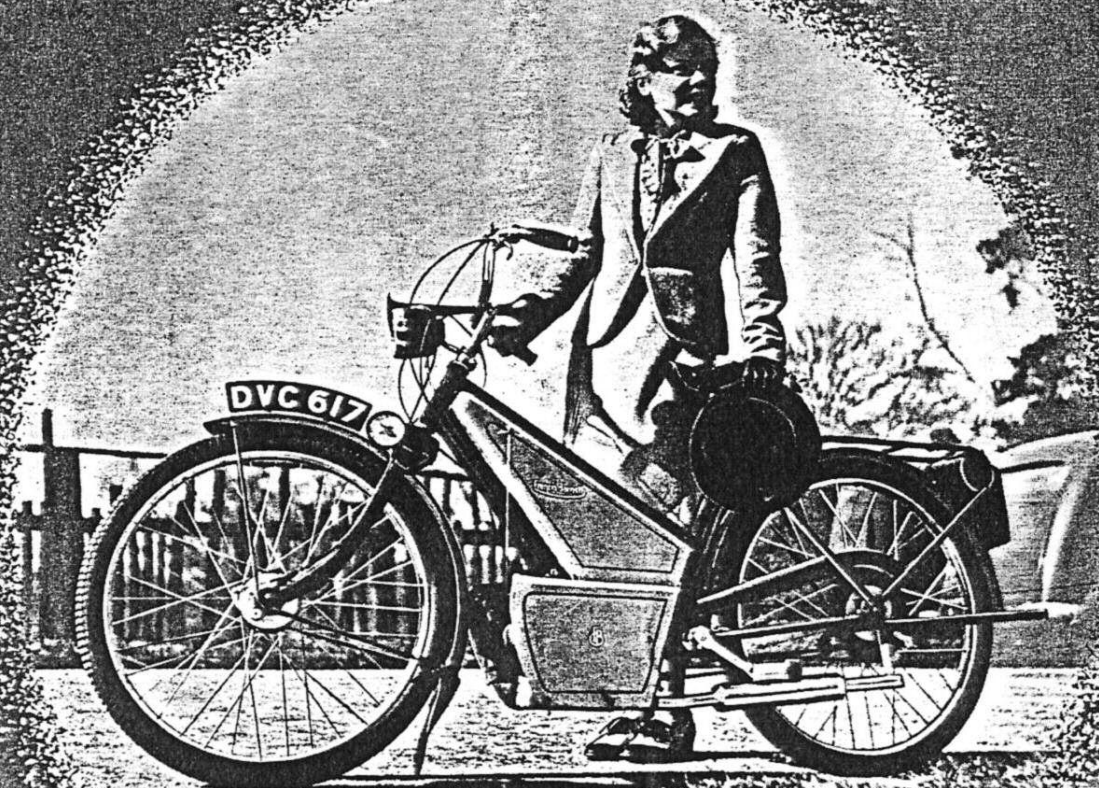


IceniCAM

Information Service

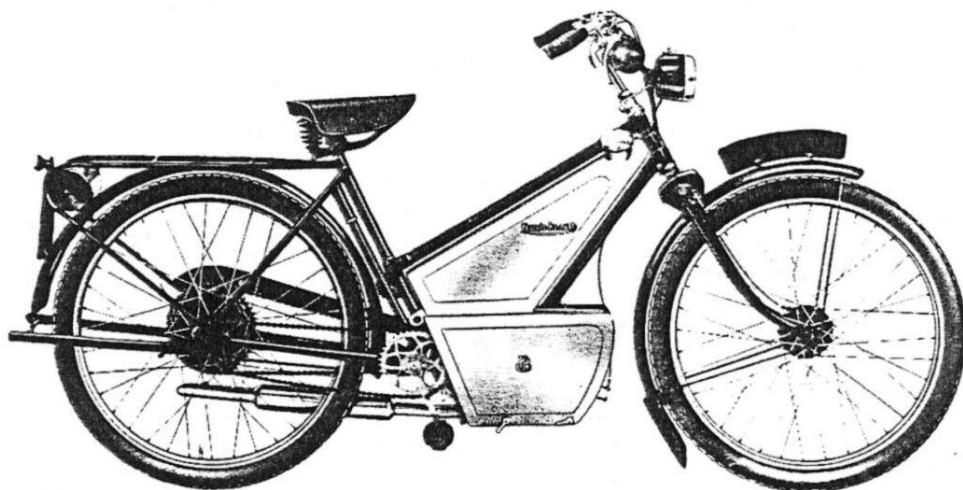


Francis-Barnett



"POWERBIKE"

CLEANLINESS AGAIN

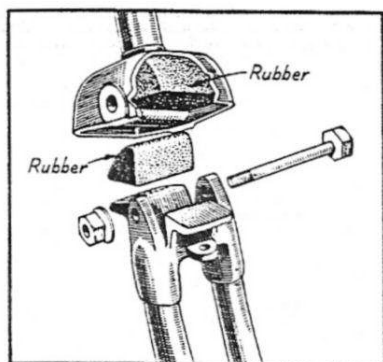


"POWERBIKE" J.50

The "Powerbike" supplies the need for a motorised bicycle with all the luxuries generally associated only with larger machines.

A glance at the specification below will show that this model, in common with other Francis-Barnett machines, has been designed to give unfailing service and freedom from dirt. Many unique features are contained in the "Powerbike." A patented rear brake mechanism of remarkable smoothness, and rubber cushioned front forks are just two features which make the Francis-Barnett a leader of its class.

The renowned 98 c.c. Villiers Engine, with flywheel magneto is employed and the whole unit is neatly enclosed beneath light and quickly detachable shields.



The simple rubber-sprung forks

SPECIFICATION

ENGINE. 98 c.c. Villiers Junior Unit. 50 m/m bore \times 50 m/m stroke. Large expansion chamber and final silencer, providing exceptionally silent running.

CLUTCH. Running in oil, incorporated in engine unit. Ratchet lever control on handlebar.

CARBURETTOR. Villiers automatic, controlled by single lever. Air strangler for starting.

TRANSMISSION. Renold chain, $\frac{1}{2}'' \times \frac{3}{16}''$. Independent adjustment provided for transmission and pedalling chains.

LUBRICATION. Petroil system. Oil measure fitted to tank filler cap. Proportion of oil to petrol—1 in 20.

LIGHTING. Villiers direct Lighting from Flywheel Dynamo. Parking battery in headlamp.

IGNITION. Villiers Flywheel Magneto.

FRAME. Cycle type, built with tandem strength fittings.

FORKS. Rubber cushioned (patented).

BRAKES. Internal expanding, 4" Rear and 3 $\frac{1}{2}$ " Front. Rear brake, pedal operated by patent mechanism. Front controlled by handlebar lever.

TANK. Steel, welded. Dull chromium plated finish, lined blue. Capacity 1 $\frac{3}{4}$ gallons. Two-level petrol tap fitted.

TYRES. 26" \times 2" \times 1 $\frac{1}{4}$ " Dunlop.

SADDLE. Brooks Spring Top.

STAND. Rear. Clip up type.

CARRIER. Large tubular rear carrier fitted with neat metal tool box.

EQUIPMENT. Bulb Horn. Licence Holder. Inflator and Tools.

Annual Tax 12/-

PRICE ~~£28~~ **£21** Third Party Insurance 15/-

MANUFACTURERS :

FRANCIS & BARNETT LTD., LOWER FORD STREET, COVENTRY

Telegrams : FRANBAR, COVENTRY

Telephone : 3054

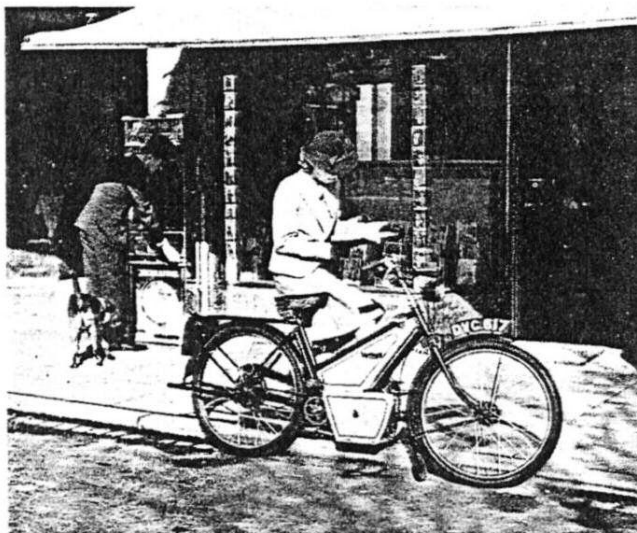
FRANCIS & BARNETT LTD., COVENTRY

UTILITY

The "Powerbike" is ideal for utility purposes—shopping, journeying to and from the office, and visiting, in fact all the irksome journeys called for in everyday life are made a pleasure to the "Powerbike" owner.

So simple to ride that anyone after half-an-hour's instruction feels perfectly at home in the saddle. These small machines are smart in appearance and reliable in use; no real mechanical knowledge is necessary to maintain the "Powerbike" in perfect order.

In the design of this machine both the comfort and cleanliness of the rider have received most careful consideration, so much so that no special protective clothing is necessary. A large and useful carrier is fitted to facilitate the carriage of parcels, etc.



ECONOMY

Save money on your fares. The "Powerbike" will give you really economical travel, coupled with a surprising amount of power from the 98 c.c. engine when required.

Driving through traffic is as simple as riding a push-cycle and the machine will idle along quite smoothly at less than walking pace if desired.

Petrol lubrication is employed and an oil measure forms part of the tank filler cap, four measures of oil being mixed with one gallon of petrol. The neat dull silver finished tank has a capacity of $1\frac{3}{4}$ gallons and is fitted with a two-level petrol tap to provide a reserve of fuel. Under normal conditions and ridden at moderate speeds the petrol consumption is approximately 120 m.p.g.



Francis-Barnett

"POWERBIKE"

FRANCIS & BARNETT LTD., COVENTRY

Francis-Barnett



GUARANTEE AND TERMS OF BUSINESS

NOTICE

Machines are delivered Carriage Paid to nearest Railway Station in Great Britain.

We do not appoint agents for the sale on our behalf of our motor cycles or other goods, but we assign to motor cycle dealers areas in which we supply to such dealers exclusively for resale in such areas. No such Dealer is authorised to transact any business, give any warranty, make any representation or incur any liability on our behalf.

CONDITIONS OF SALE AND GUARANTEE

We give the following guarantee with our motor cycles, including all accessories and component parts other than tyres, saddles, chains and lighting and electrical equipment and other than accessories and component parts supplied to the order of the Purchaser and differing from those comprised in the standard specifications. This guarantee is given in place of any implied conditions or warranties or any liabilities whatsoever statutory or otherwise; no guarantee except that hereinafter contained and no condition or warranty under any liability whatsoever except under the guarantee hereinafter contained.

We guarantee, subject to the conditions mentioned below, that all precautions which are usual and reasonable have been taken by us to secure excellence of materials and workmanship, but this guarantee is to extend and be in force for six months only from date of purchase, or date of exchange in case of any accessory or part supplied by way of exchange as hereinafter provided, and damages for which we make ourselves responsible under this guarantee are limited to the free repair or supply of a new part or accessory in exchange for the part of the motor cycle or accessory which may have proved defective. We undertake, subject to the conditions mentioned below, to make good in manner aforesaid any part or accessory covered by this guarantee

which has proved defective within the said period of six months. We do not undertake to replace or refix, or bear the cost of replacing or refixing any such new part or accessory in the motor cycle.

As motor cycles are easily liable to derangement by neglect or misuse, this guarantee does not apply to defects caused by wear and tear, misuse or neglect.

The term "misuse" shall include amongst others the following acts:—

The use of a motor cycle or of a motor cycle and sidecar combined, when carrying more persons or a greater weight than that for which the machine was designed by the manufacturer.

We do not guarantee tyres, saddles, chains or lighting and electrical equipment or any accessories or component parts supplied to the order of the Purchaser differing from those comprised in the standard specifications. As regards all such tyres, saddles, chains, lighting and electrical equipment, accessories and component parts, no guarantee, condition or warranty of any kind statutory or otherwise is given or is to be implied, and we are to be under no liability whatsoever in respect thereof.

CONDITIONS OF GUARANTEE

If a defective part or accessory should be found in our motor cycles, or in any part or accessory supplied by way of exchange as before provided, it must be sent to us **CARRIAGE PAID**, and accompanied by an intimation from the owner that he desires to have it repaired or exchanged free of charge under our guarantee; and he must also furnish us at the same time with the number of the machine, the date of the purchase or the date when the alleged defective part or accessory was exchanged as the case may be.

Failing compliance with the above, such articles will lie here at **THE RISK OF THE OWNER**, and this guarantee and any implied guarantee warranty or condition shall not be enforced.

We reserve the right to alter specifications and/or prices without notice.