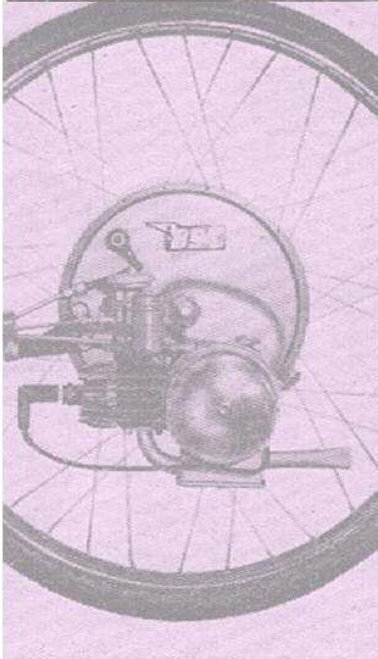


# IceniCAM Information Service



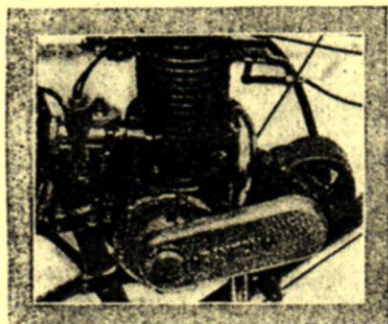
[www.icenicam.org.uk](http://www.icenicam.org.uk)



## THE DAYTON MOTORCYCLETTE.

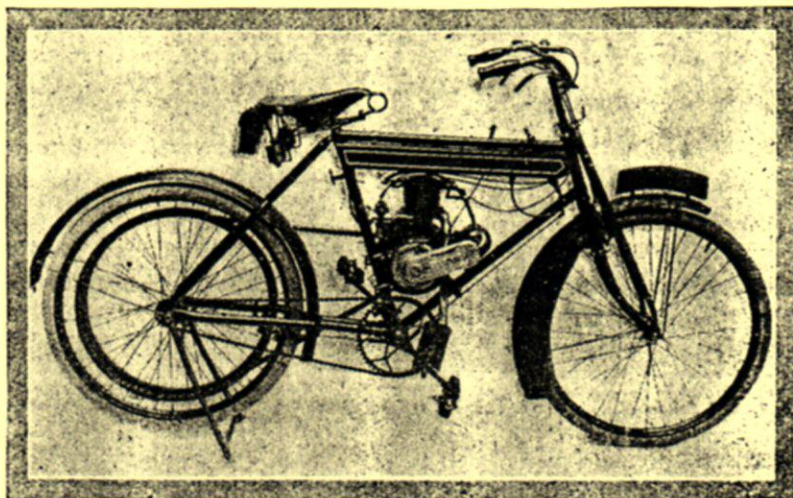
1½ h.p. Two-stroke Engine—162 c.c. Capacity—Price 20 Guineas—  
Weight 75 lbs.

The Day Manufacturing Co., 222, Shoreditch High Street, London, E., are putting on the market a 1½ h.p. Dayton two-stroke machine. It is of the motor-cyclette type, a class of machine which we have always held in favour. The engine, which is a two-stroke, has a bore and stroke of 57 mm. and 63.5 mm., giving a cubical capacity of 162 c.c. An Amac carburetter, bolted directly to the cylinder, supplies the mixture. The spark is obtained from a U.H. magneto, which is chain driven and securely fixed. The crankshaft is mounted on properly caged ball bearings, and an 8 in. outside flywheel is employed. The engine is fitted with



Showing method of attaching carburetter to engine.

handlebar control for the carburetter and compression-release valve. A large exhaust pipe with a big silencer is fitted under the engine. The transmission from the engine is by a ½ in. rubber belt passing over V pulley, no jockey pulley being employed. The crankcase has cast

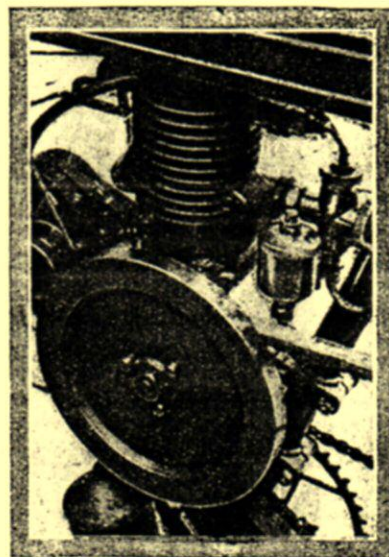


Off-side view of the Dayton motorcyclette.

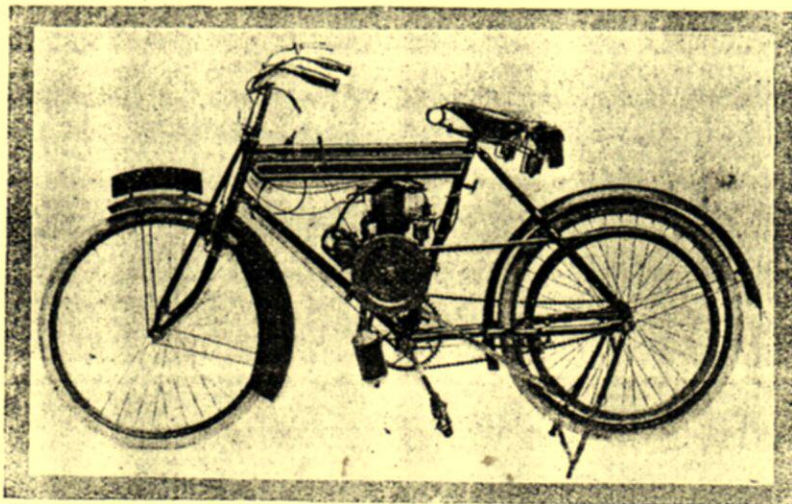
on it three lugs, by which the engine is secured to the frame; thus, in the event of the bottom bracket breaking, the frame would not fall to pieces, but would be amply supported by the engine. The method of brake control is a very novel feature with this machine. Ordinary roller levers are fitted to the handlebar, links and connecting rods coupled to a combination brake, which acts on both the belt rim and the off side of the wheel rim; this forms an ideal type of brake, combining the concave and convex braking effects.

The appearance of the whole machine is very pleasing, while the tank, which holds sufficient petrol for 130 miles and

a large supply of oil, is very neat. The design has been carefully studied, and there are the minimum of small parts; the whole power unit is very accessible, the result of British manufacture throughout.



The Dayton two-stroke power unit.



Near-side view of the Dayton motorcyclette, which has a 2 h.p. two-stroke power unit of 162 c.c. capacity.

### IMPORTANT.

In Messrs. Godfrey and Applebee's advertisement to-day the statement appears that the well-known Scott machine will not be exhibited at Olympia. After the advertisement had gone to press the Scott Co. were successful in securing space on Stand 136a.