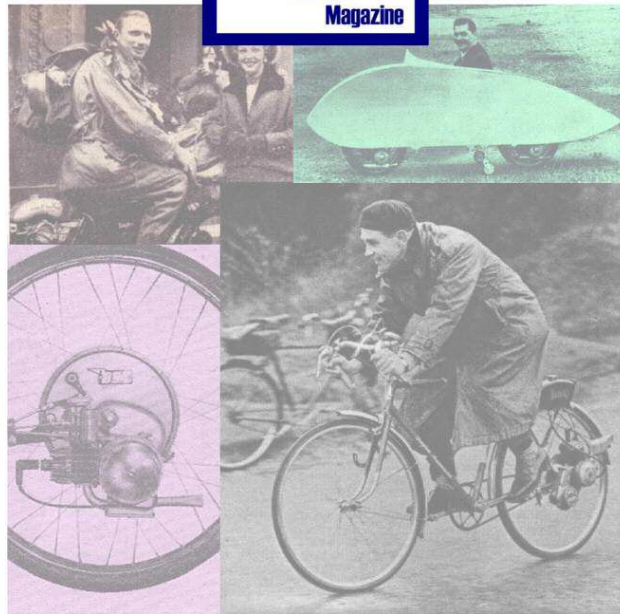


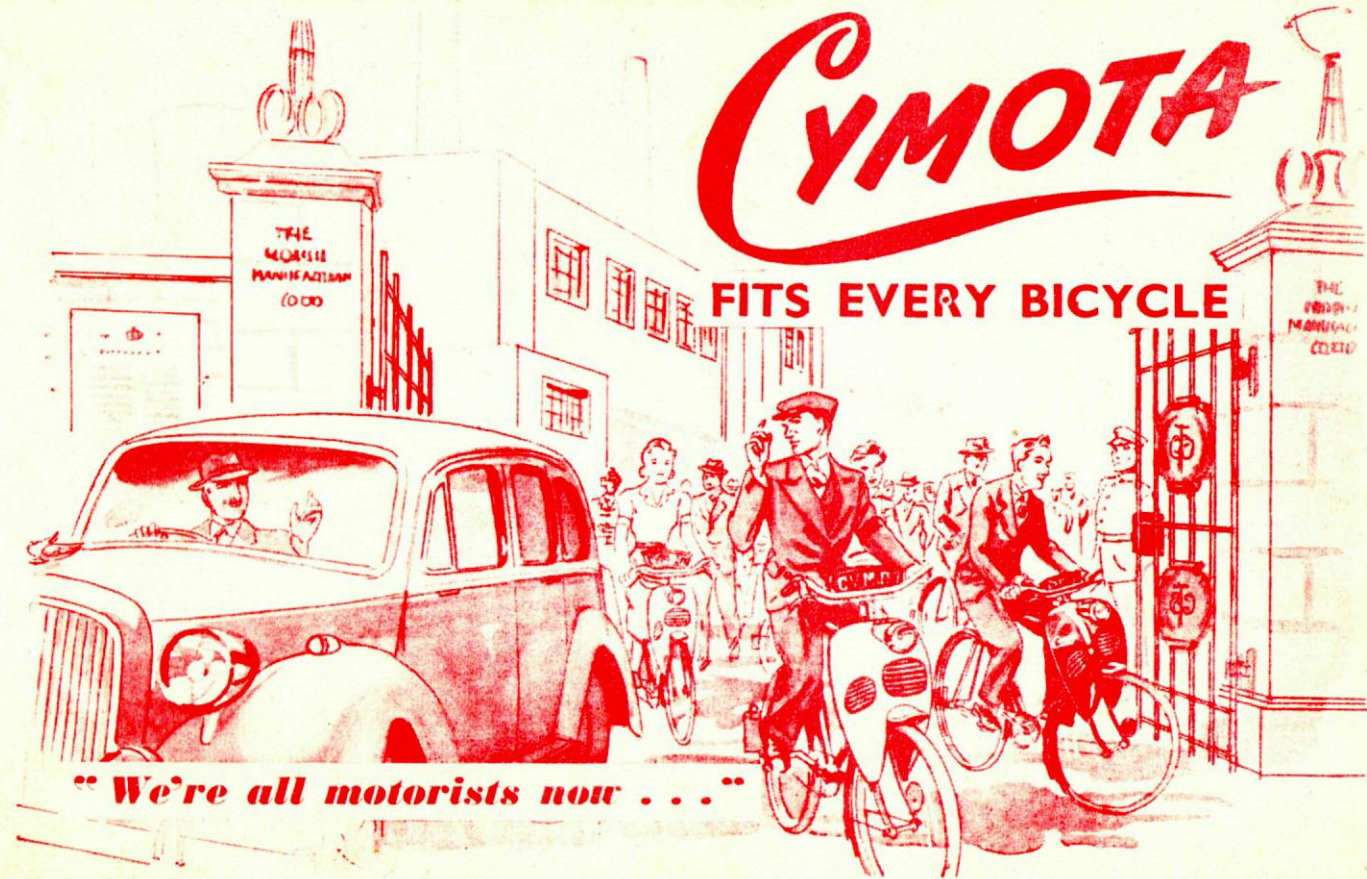
IceniCAM Information Service





Your local CYMOTA
Agent is :—

Cymo Ltd., Leamington Road, Birmingham, 23. EAST 2271.



CYMOTA

FITS EVERY BICYCLE

"We're all motorists now . . ."

CYMOTA

The World's best
CYCLE MOTOR

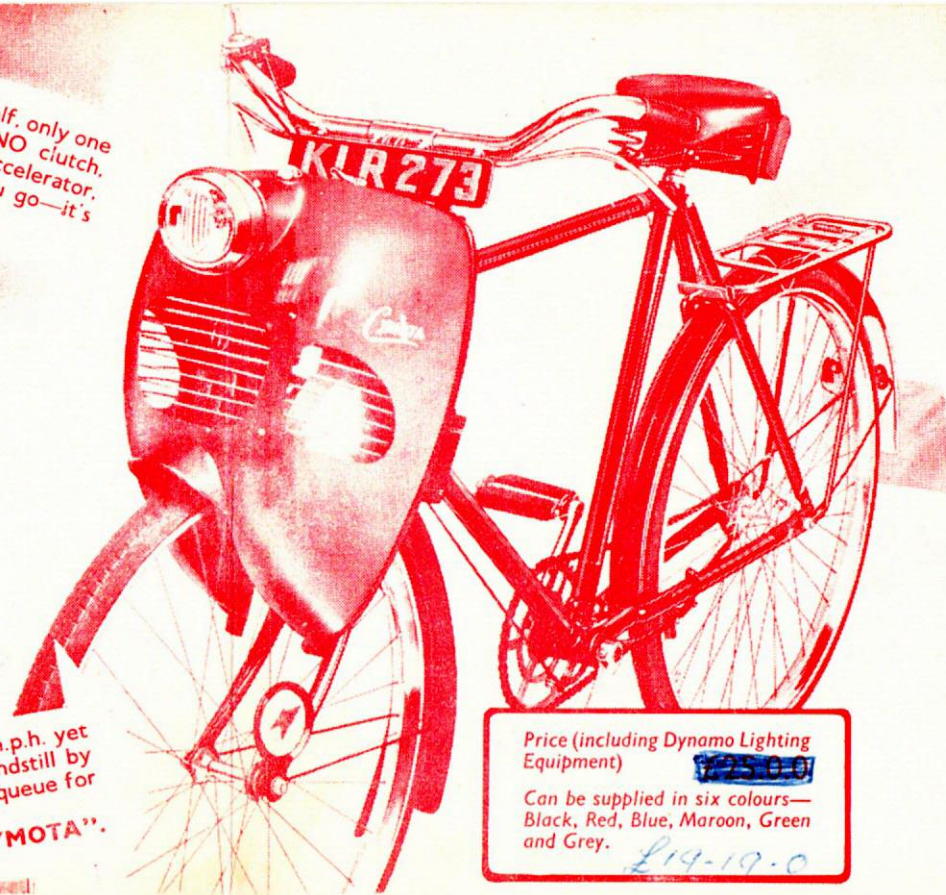
the cheapest
motor transport
in the world

CYMOTA is simplicity itself, only one control—the accelerator—NO clutch, NO gears. Pull forward the accelerator, stop pedalling and away you go—it's as easy as that.

CYMOTA is quickly fitted to any bicycle. It is perfectly balanced to give finger-tip control. Anyone who can cycle—can CYMOTA.

CYMOTA leaves the rear carrier free for its job of carrying. The patented bonnet, light and attractively designed, protects the powerful British 45 c.c. engine.

CYMOTA cruises at 5 - 25 m.p.h. yet is brought smoothly to a standstill by your bicycle brakes. Don't queue for buses or trains—
"GO 'BUY' CYMOTA".



Price (including Dynamo Lighting Equipment)

£25.0.0

Can be supplied in six colours—Black, Red, Blue, Maroon, Green and Grey.

£19.19.0

Up to 250 miles per gallon

CYMOTA is British throughout. The source of its power is the 45 c.c. two-stroke Engine whose success is the result of many years of precision engineering experience. Whether you desire to cruise at low speed or accelerate to get there more quickly, your CYMOTA, safe, sturdy, dependable, responds at once.

Quiet in operation, the CYMOTA Engine has been tested over thousands of miles. Its small number of moving parts guarantee low maintenance cost and continuous performance during years of reliable service, giving you up to 250 miles for one single gallon of petrol-oil.

The carborundum roller drives your front wheel with a minimum of tyre wear. The built-in spring shock absorbers guarantee comfortable riding. Should you wish to pedal, or cruise downhill without using your Power Unit, the simple movement of a lever will disconnect the Engine.

CYMOTA gives you safe riding on the darkest night; the built-in dynamo and battery fitment for parking—provided at no extra cost—feed power to the Bonnet Headlamp.

TECHNICAL DATA. Bore 38 m.m., stroke 40 m.m., capacity 45 c.c., speed 5-25 m.p.h., 1 Cylinder, 2-stroke Motor. No chain, no clutch, no gears. Built-in dynamo lighting set.

GENERAL INFORMATION

REGISTRATION. The local Borough or County Council will issue you with a road fund licence and a registration book, in which you will find your number for the plates for the front and rear of your bicycle.

YOUR DRIVING LICENCE. For a fee of 5/- you can obtain a provisional driving licence which, if you fit "L" plates, will entitle you to use your CYMOTA at once. In due course, after you have passed your driving test, your "L" plates may be removed.

LICENCE HOLDER AND HORN. Your supplier will provide this equipment for your bicycle for a small charge.

World Patent Protection

Agents throughout the World



EVERY CYMOTA is guaranteed