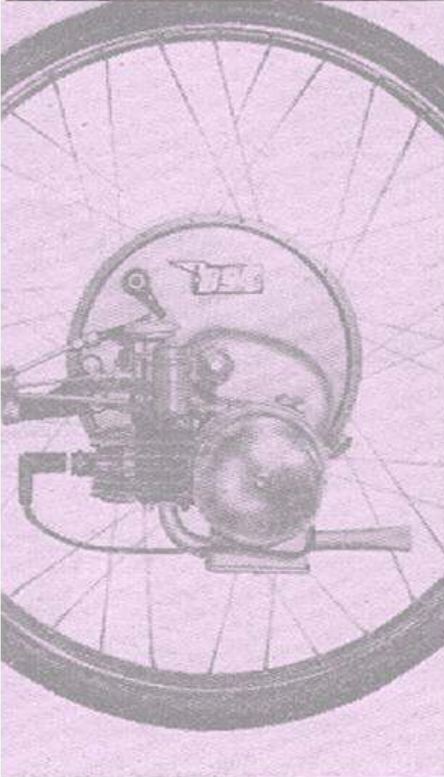
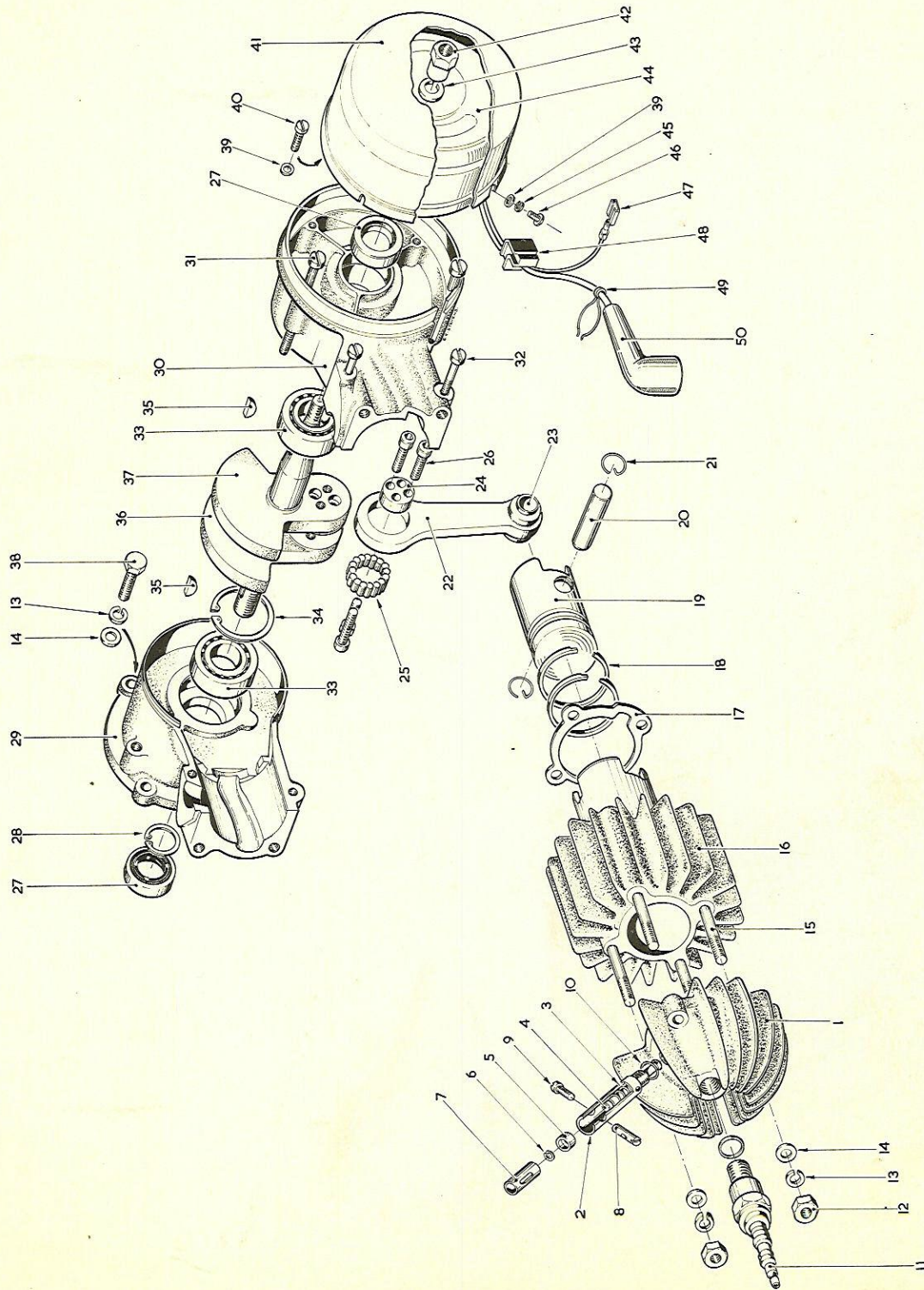


IceniCAM Information Service





1/7/68

ENGINE UNIT. (Engine No. 10564 onwards)

CLARK SCAMP MOPED

Item	Cat.No.	Title	No. Off	Remarks
1	4424	Cylinder Head	1	
2	4437	Valve Body	1	
3	B4461	Spring	1	
4	4438	Valve	1	
5	4435	Recessed Washer	1	
6	B4499	Circlip	1	
7	4439	Plunger	1	
8	4462	Cable Barrel	1	
9	B718	Screw	1	
10	B4463	Copper Seal Washer	1	
11	B4291	Spark Plug	1	
12	B35	Nut	4	
13	B1418	Spring Washer	8	
14	B40	Washer	8	
15	4456	Cylinder Stud	4	
16	4428	Cylinder	1	
17	4451	Cylinder/Crankcase Gasket	1	
18	B4449	Piston Ring	2	
19	B4446	Piston	1	
20	B4447	Gudgeon Pin	1	
21	B4448	Circlip	2	
22	4407	Connecting Rod	1	
23	B4445	Little End Bush	1	
24	4888	Crank Journal	1	
25	B4444	Bearing Roller	16	
26	5045	Big End Screw	4	
27	B150	Seal	2	
28	B228	Circlip	1	
29	4429	Crankcase - Clutch Half	1	} Available as matched pairs only.
30	4430	Crankcase - Magneto Half	1	
31	4455	Crankcase Screw	3	
32	4420	Small Crankcase Screw	2	
33	B3418	Ball Bearing	2	
34	B4453	Circlip	1	
35	B4498	Woodruff Key	2	
36	4426	Crankshaft - Drive Half	1	
37	4427	Crankshaft - Magneto Half	1	
38	B45	Screw	4	
39	B1354	Washer	6	
40	B522	Screw	3	
41	4404	Magneto Cover	1	

1/7/68

(Engine No. 10564 onwards)

ENGINE UNIT

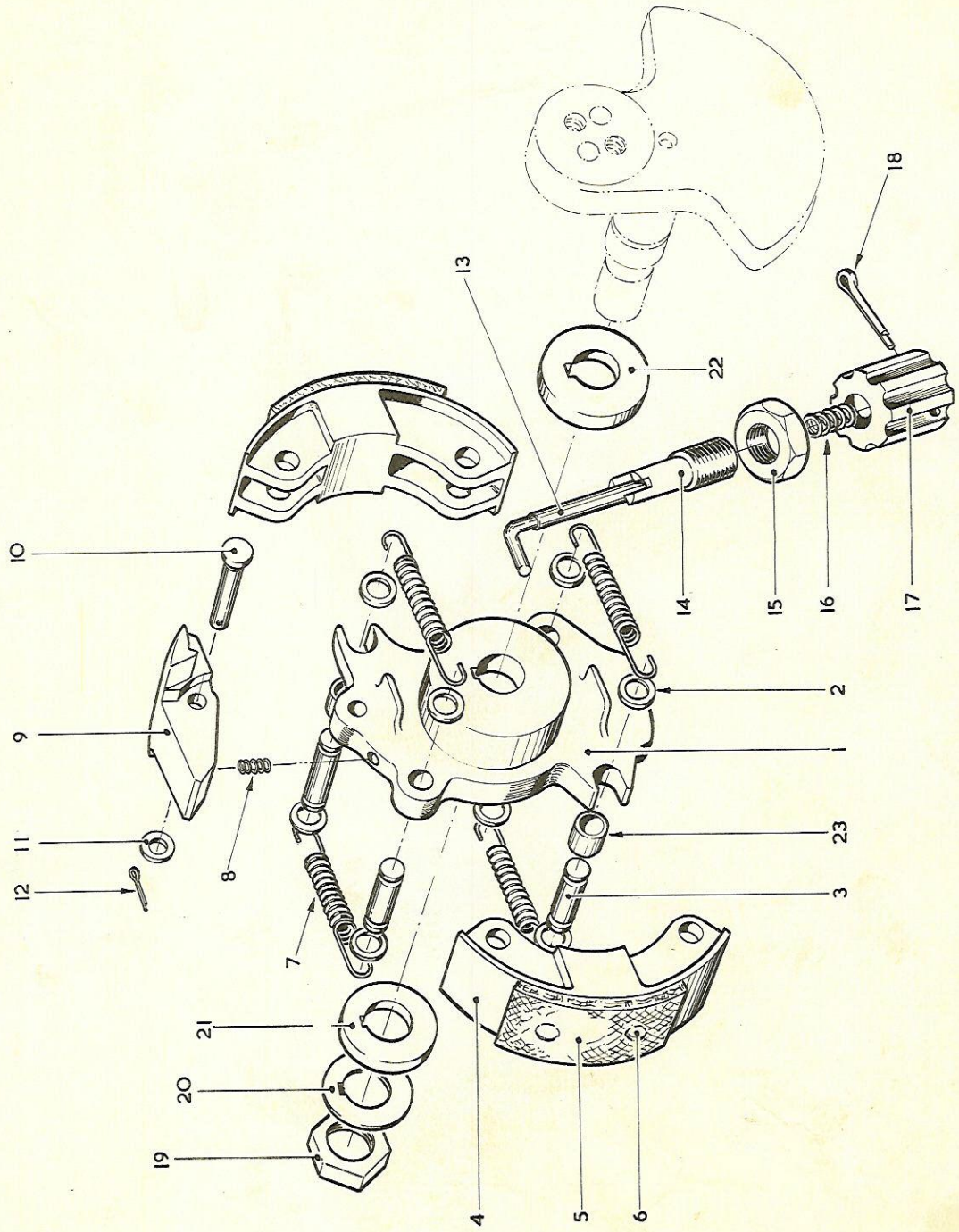
CLARK SCAMP MOPED

Item	Cat. No.	Title	No. Off	Remarks
42	4532	Crankshaft Nut	1	
43	B1725	Spring Washer	1	
44	B4284	Flywheel Magneto	1	
45	B3113	Spring Washer	3	
46	B71	Screw	3	
47	B4566	Female Terminal	1	
48	4489	H. T. Lead Grommet	1	
49	4609	H. T. Lead Clip	1	
50	B4292	Suppressor Plug Cover	1	
		In addition to the individual components, the following sub-assemblies or kits of parts are available.		
	4502	De-compressor Valve Assy.		Consists of items 2, 3, 4, 5, and 6.
	KP4450	Piston Assembly		Consists of items 18, 19, 20 and 21.
	KP4653	Con Rod/Big End Overhaul Kit		Consists of items 22, 23, 24, 25 and 26 with hex. key
	KP5074	Complete Engine consisting of all above parts		
	KP5046	Bare Engine Assembly (Does not include magneto or cover, carburettor or induction pipe, decompressor, silencer, spark plug.		Does not include Keys, item 35, or fixing screws, item 38.
	KP4655	Gasket Set for Engine and Transmission Unit		Complete set of gaskets & sealing washers including those for silencer and gear transmission.
		For details of Carburettor see Section 4.		
		For breakdown of Flywheel Magneto see Section 3.		

1/7/68

ENGINE UNIT (Engine No. 10564 onwards)

CLARK SCAMP MOPED



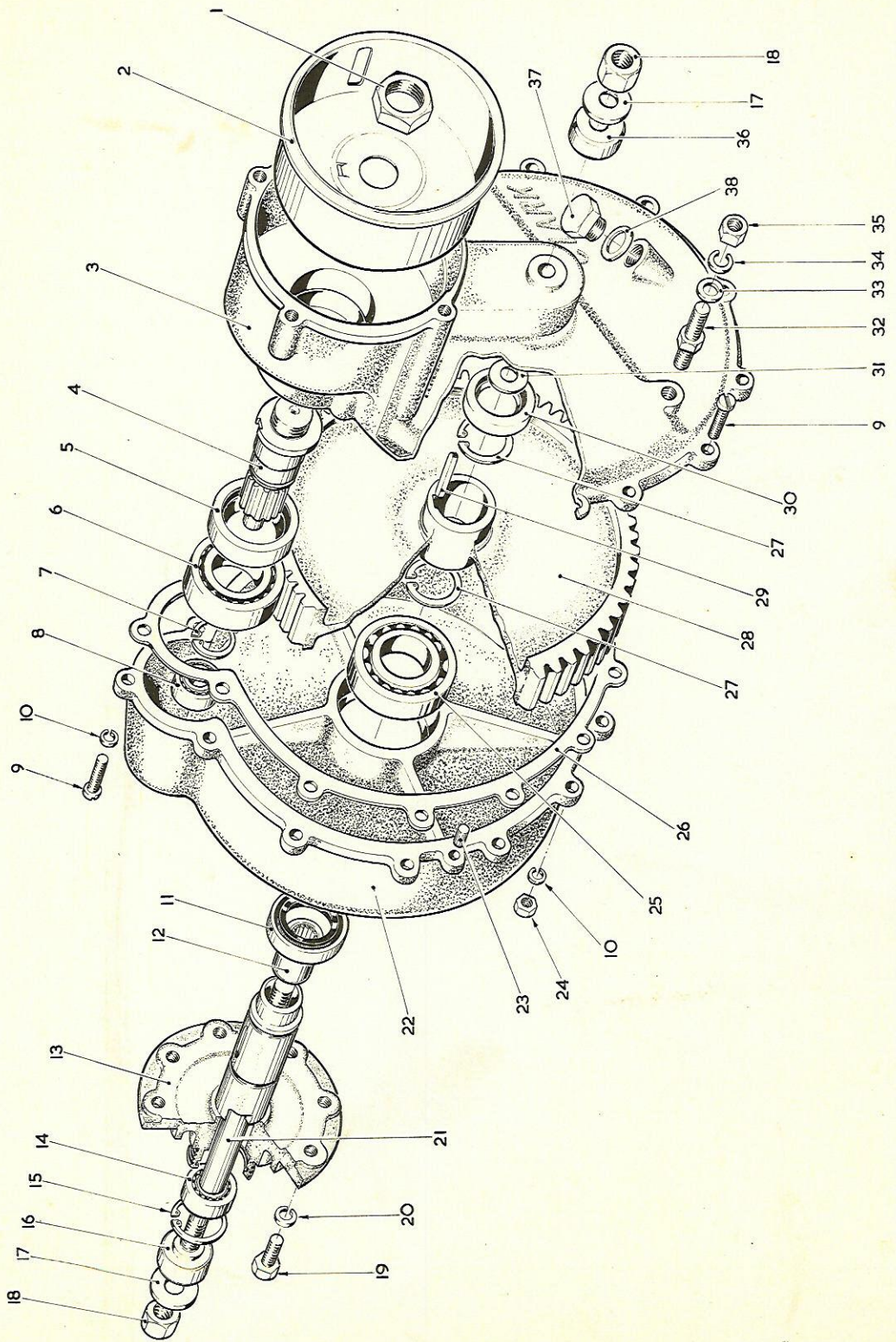
Fitted to about Engine No. 11,000 onwards.
CLUTCH ASSEMBLY Also replacing all earlier units. 1/7/68

Item	Cat.No.	Title	No. Off	Remarks
1	4962	Clutch Body	1	
2	4904	Washer	8	
3	4982	Hinge Pin	4	
4	4413	Clutch Shoe	2	
5	4465	Clutch Lining	2	
6	4466	Rivets	4	
7	4457	Clutch Spring	4	
8	5039	Pawl Support Spring	1	
9	4963	Clutch Pawl	1	
10	4981	Pawl Pivot Pin	1	
11	4443	Washer	1	
12	B156	Split Pin	1	
13	4978	Disconnect Rod	1	
14	4977	Disconnect Housing	1	
15	5048	Backnut	1	
16	B4560	Spring	1	
17	4556	Disconnect Knob	1	
18	B4836	Split Cotter Pin	1	
19	4889	Clutch Clamp Nut	1	
20	4895	Tab Washer	1	
21	4970	Clamp Washer	1	
22	4969	Drive Collar	1	
23	5077	Rubber Bush	2	
		In addition to the individual components the following kits of parts are available.		
	KP5076	Complete set of all above parts		Assembled where practicable
	KP4654	Clutch Shoe Replacement Kit		Consists of a pair of shoes, item 4, with linings, item 5, fitted.

Fitted to about Engine No. 11,000 onwards.
1/7/68
Also replacing all earlier units.

CLUTCH UNIT

CLARK SCAMP MOPED



1/7/68

TRANSMISSION

CLARK SCAMP MOPED

Item	Cat.No.	Title	No. Off	Remarks
1	4980	Hex Nut	1	Fitted to around Engine No. 11,000 onwards. Also replacing all earlier models. With item 22 available only as matched pair
2	4964	Clutch Drum	1	
3	4431	Gearwheel Case Engine Half	1	
4	4422	Drive Pinion	1	
5	B4470	Seal	1	
6	B4471	Ball Bearing	1	
7	B4472	Circlip	1	
8	B1325	Ball Bearing	1	
9	B293	Screw	13	
10	B635	Spring Washer	13	
11	B4474	Seal	1	
12	B4476	Needle Bearing	1	
13	4425	Quill Shaft	1	
14	B4475	Bearing	1	
15	B4477	Circlip	1	This spacer should be assembled with the small dia. shoulder towards the ball race.
16	4419	Spacer	1	
17	4874	Washer	2	
18	B4484	Nut	2	
19	B4526	Screw	8	
20	B1418	Spring Washer	8	
21	4423	Rear Wheel Spindle	1	With item 3 available as a matched pair only.
22	4432	Gearwheel case - Wheel Half	1	
23	4481	Dowel Pin	2	
24	B38	Nut	10	
25	B4473	Ball Bearing	1	
26	4480	Gearwheel Case Gasket	1	
27	B4478	Circlip	2	
28	4408	Main Gearwheel	1	This washer is between the shoulder on the rear wheel spindle and the inside face of the gearwheel case.
29	4440	Main Drive Key	1	
30	B3312	Seal	1	
31	B4479	Washer	1	
32	4569	Engine fixing stud	1	
33	B981	Washer	1	
34	B1723	Spring Washer	1	
35	B980	Nut	1	
36	4558	Nearside Spacer	1	
37	4441	Filler plug	1	
38	B1964	Selon Washer	1	

1/7/68

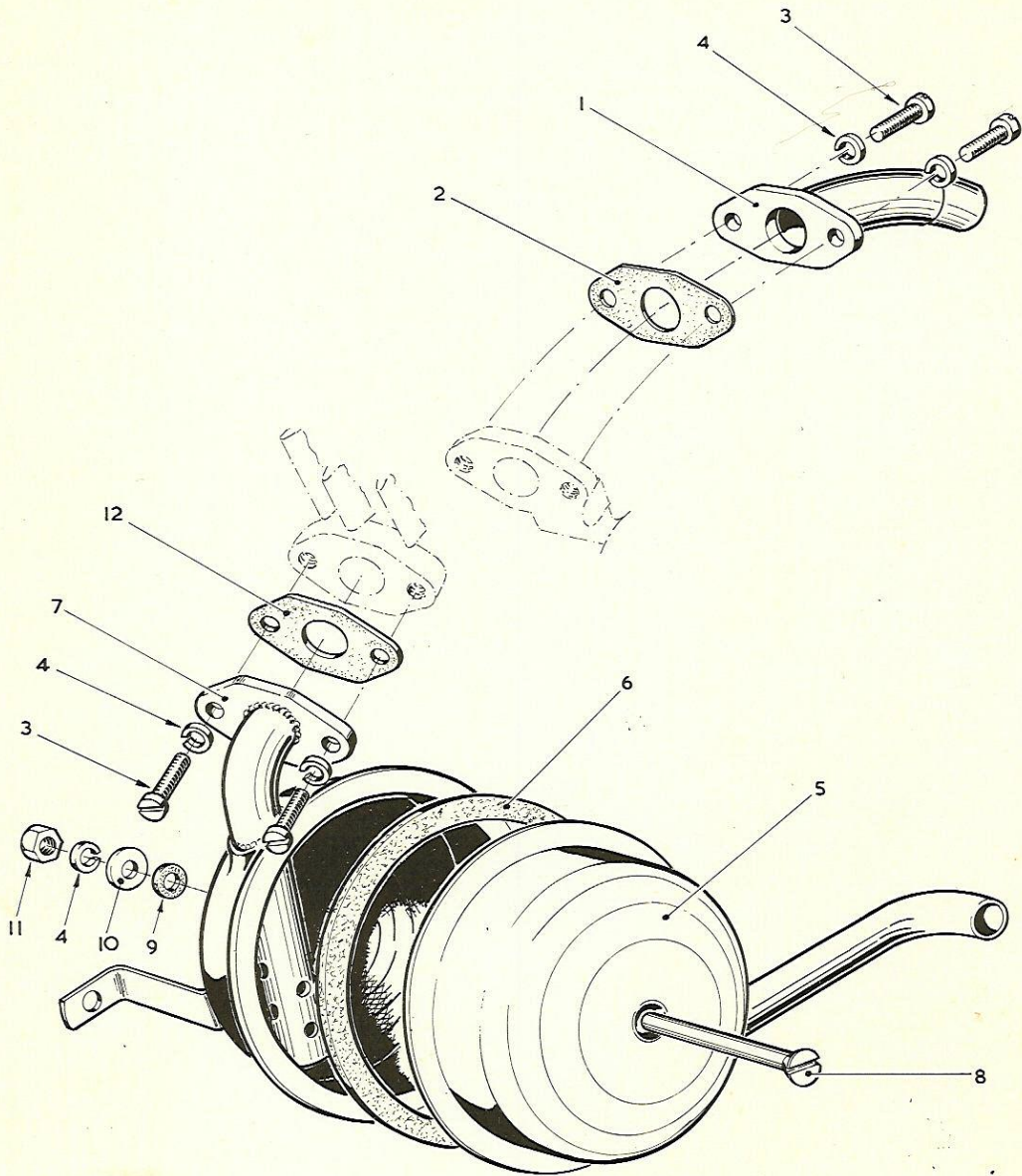
TRANSMISSION

CLARK SCAMP MOPED

In addition to the individual components the following sub-assemblies or kits of parts are available.

KP5073	Assembly consisting of all the above parts
--------	--

1/7/68



INDUCTION & EXHAUST SYSTEM

CLARK SCAMP MOPED

Item	Cat.No.	Title	No. Off	Remarks
1	4458	Induction Pipe	1	
2	4459	Induction Gasket	1	
3	B4460	Screw	4	
4	B1418	Spring Washer	5	
5	4618	Silencer Shell - Tailpipe Side	1	
6	4573	Silencer Gasket	1	
7	4617	Silencer Shell - Engine Side	1	
8	B4575	Screw	1	
9	B4572	Fibre Washer	1	
10	B40	Washer	1	
11	B35	Nut	1	
12	4483	Exhaust Gasket	1	
		In addition to the individual components, the following sub-assembly is available.		
	4482	Silencer		Does not include attachment screws and washers 3 and 4 or gasket 12.
	KP5075	Complete set of all the above parts		

1/7/68

INDUCTION & EXHAUST SYSTEM

CLARK SCAMP MOPED