

# AMAL

September, 1958.

List No. 531 (Issue No. 2)

## Type 363 Lightweight "Monobloc" Carburetter

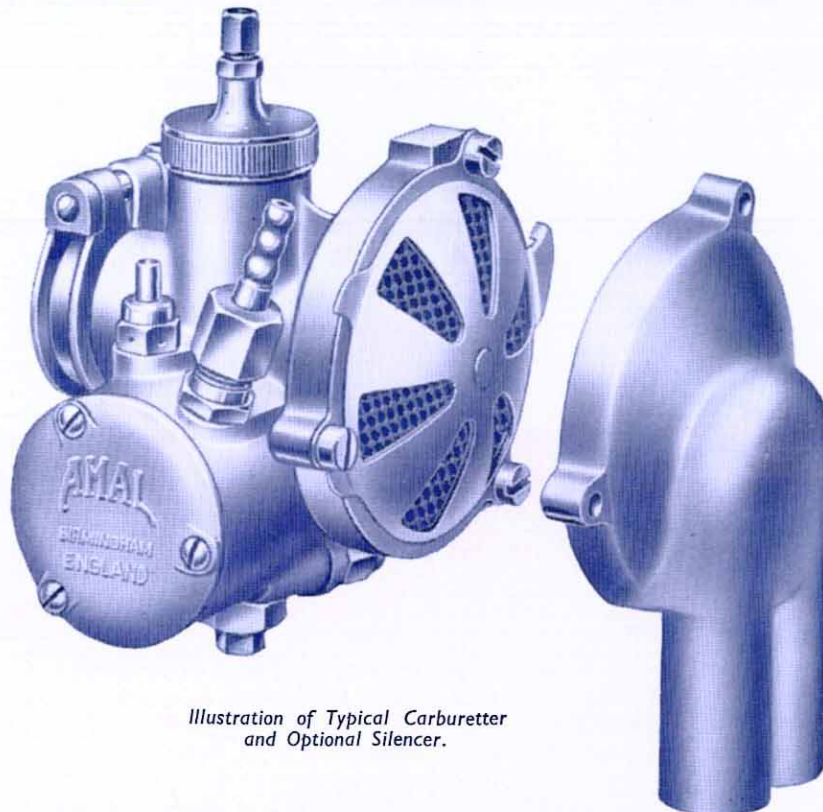


Illustration of Typical Carburetter  
and Optional Silencer.

This Lightweight "Monobloc" Carburetter follows the successful "Monobloc" carburetter as fitted to larger capacity engines. It is suitable for engines with cylinder capacities of 75 cc. to 250 cc. four-stroke, or 60 cc. to 175 cc. two-stroke. (*See overleaf for bore sizes available.*)

In operation its floatchamber, which is fitted with a tickler, supplies fuel to a calibrated main jet, a pilot system, a needle jet in which operates a tapered needle attached to a piston type throttle valve. The jet system is compensated and gives an economical fuel consumption and at the same time provision is made for rapid acceleration.

Built into the carburetters main air intake is a filter element and strangler shutter, to which, if desired, a silencer may be fitted, the whole carburetter having a clean monobloc appearance.

The main jet, pilot jet and air filter elements are readily accessible for easy removing when cleaning.

Control of the throttle is by a cable which can be operated by a single lever or twist grip. Connection of the carburetter to the engine inlet pipe or cylinder induction stub diameter is by a clip.

Various petrol connections to the float chamber are available:—*see overleaf.*

**PRICE OF CARBURETTER ONLY** ~~£4 0s. 0d.~~ ~~£4-4-0~~

including a suitable petrol feed connection on float chamber.

**EXTRA FOR AIR SILENCER** ~~4s. 0d.~~ ~~4s. 6d.~~

**How to Order.** When ordering a carburetter to suit a standard machine state: Year of manufacture, make of machine, model. In other cases: Type, make and capacity of engine, two or four stroke, maximum number of revolutions per minute, size of cylinders induction stub, type of fuel supply connection to float chamber of carburetter.

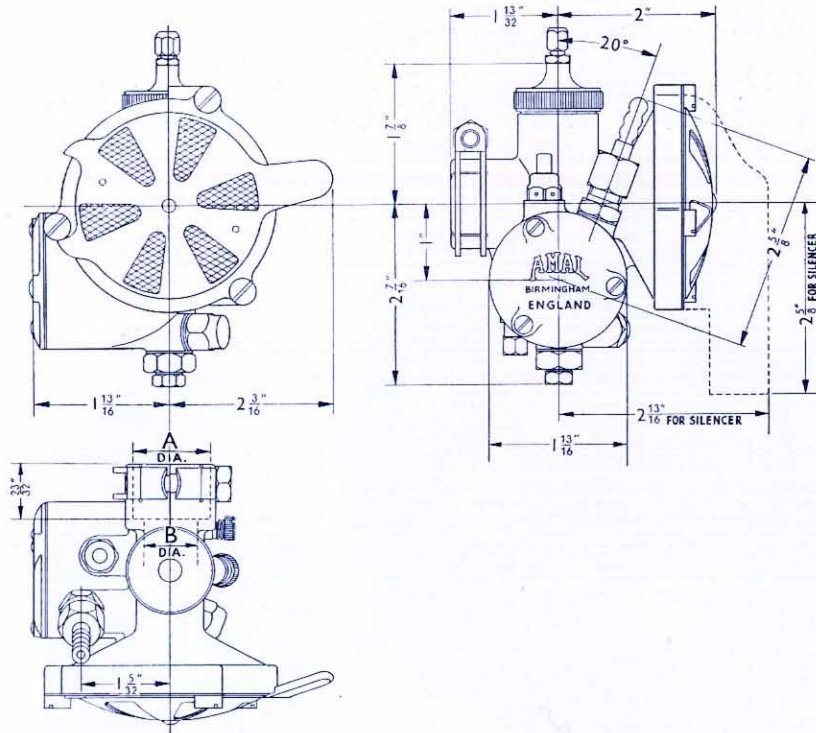
Prices stated are those ruling at the date of this list.

**AMAL LTD., HOLDFORD ROAD, WITTON,  
BIRMINGHAM 6, ENGLAND**

'Phone: Birmingham, BIRchfields 4571.  
(P.B.X. 6 lines)

Telegrams: "AMALCARB, 'PHONE,  
BIRMINGHAM."

# AMAL



Carburetters are available with the following Cross Bore and Outlet Sizes.

DIA. B CROSS BORE		DIA. A OUTLET CLIP	
inches	mm.	inches	mm.
$\frac{15}{32}$	11.9	1	25.4
$\frac{17}{32}$	13.5	1	25.4
$\frac{5}{8}$	15.9	1	25.4
$\frac{11}{16}$	17.5	$\frac{29}{32}$	23.0
$\frac{11}{16}$	17.5	1	25.4
$\frac{3}{4}$	19.0	1	25.4
$\frac{25}{32}$	19.8	1	25.4

#### Available Petrol Connections to Float Chamber.

- Nut and Nipple fitting for an approximate  $\frac{3}{16}$ " bore flexible pipe (as illustrated)
- Connection for a push-on approximate  $\frac{3}{16}$ " bore flexible pipe.
- Banjo Connection for an approximate  $\frac{3}{16}$ " bore flexible pipe.
- Nut and Nipple fitting for a  $\frac{1}{4}$ " outside diameter copper pipe.

**GUARANTEE.**—The Company take all possible reasonable care in the manufacture and the quality of their products. Purchasers are informed that, any part proved to be defective in manufacture or quality, and returned to the works within six months of its purchase new, will be replaced. The Company must respectfully point out however, that its responsibility and that of its agents, stockists and dealers, is limited to this Guarantee, and that they cannot, under any circumstances, be held responsible for any loss or for any contingent or resulting liability arising through any defect. These conditions of sale and use also apply when the Company's product form part of the original equipment of machines purchased new.

2,000/9/58. W.

Printed in England

**AMAL LTD., HOLDFORD ROAD, WITTON,  
BIRMINGHAM 6, ENGLAND**

'Phone : Birmingham, BIRchfields 4571.  
(P.B.X. 6 lines)

Telegrams : "AMALCARB, 'PHONE,  
BIRMINGHAM."

# IceniCAM Information Service



[www.icenicam.org.uk](http://www.icenicam.org.uk)