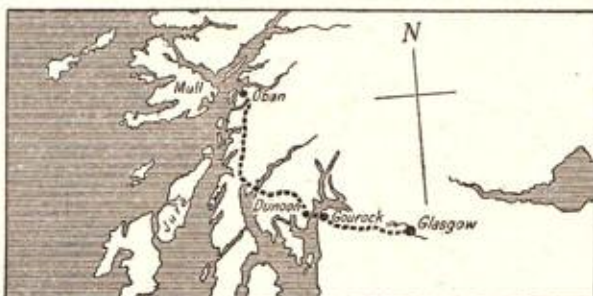



Go farther afield

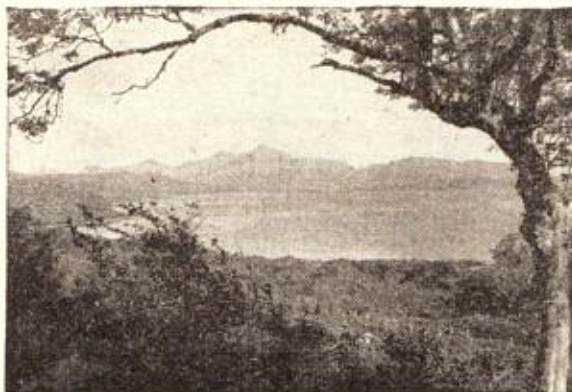



Argyllshire
and the
Isle of Mull



Only 42 miles west of Glasgow — by way of steamers from Gourock (or ferry boats from the Cloch Point) to  Dunoon — is this outlook over Loch Fyne to the Kintyre Peninsula. The road from Glendaruel Bridge (16½ miles from Dunoon) climbs in great swirling bends to an altitude of 1,042 feet above sea level.

From the road summit, the view extends past the indentation of Loch Gilp, on the far side of Loch Fyne, to the jagged summits of Jura, one of the most fascinating of the islands of the Inner Hebrides.



Farther out in Argyllshire lies the Island of Mull, reached from the mainland at Oban by a steamer every  week-day. Mull has little motor traffic and limited public transport, so that cycling is the ideal way of visiting the island's 300 miles of coastline and its picturesque inland scenery.

ACCLES & POLLOCK WILL BE AT THE
CYCLE AND MOTOR CYCLE SHOW.
MAKE A POINT OF VISITING
STAND No. 139


Ask your local dealer for our "Go farther afield" leaflet which illustrates a whole range of attractive tours.

save weight safely with

KROMO

CHROME MOLYBDENUM
cycle tubes

PLAIN GAUGE OR BUTTED TUBES CAN ALSO BE SUPPLIED IN KROMO, ALSO FORKS AND STAYS

ACCLES & POLLOCK LIMITED · OLDBURY · BIRMINGHAM · A  COMPANY



EARLS COURT, 1954

*Next season's new models, equipment
and clothing described in this*

WORD AND PICTURE PREVIEW

Accles and Pollock, Ltd.

WHEN the firm was founded, 54 years ago, bicycles then in use were cumbersome and heavy. Now, thanks to enterprise and ingenuity on the part of many firms in the cycle industry, even utilitarian machines can be "lightweights." And A. and P. can be proud of their achievements in helping to bring this about.

Cyclists demanded lightness, plus, of course, strength. The Birmingham company have met this demand, developing their famous "Kromo" tubing for bicycle construction.

Visitors to the Accles and Pollock stand will see examples of all kinds of cycle tubes and fittings in "Kromo."

Oldbury, Birmingham.
STAND No. 139.

**G. J. Adie and
Nephew**

